

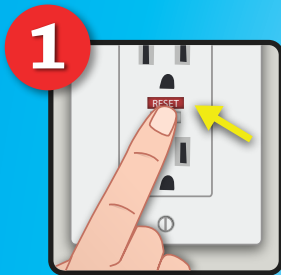
5 Easy Steps to a Safer Home

How to Test AFCIs and GFCIs

GFCI

In order to provide enhanced protection, your AFCIs and GFCIs need to be functioning properly. Follow these easy steps to test them each month.

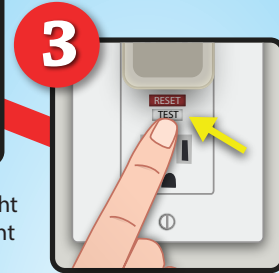
26% of respondents who claimed to have tested their GFCIs have discovered **one** that was **not working properly**.*



1 Push the reset button to prepare the outlet.



2 Plug an ordinary nightlight in and turn it ON. The light should now be on.



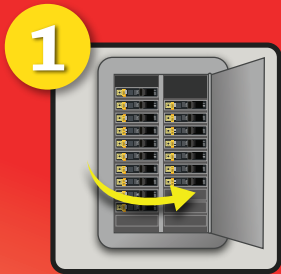
3 Push the "test" button. The nightlight should turn OFF.



4 Push the "reset" button again. The nightlight should now go ON again.



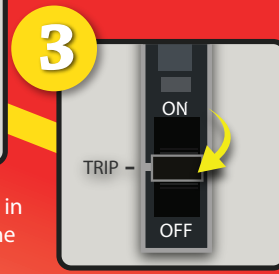
5 If the nightlight does not turn off when the "test" button is pushed, contact a licensed electrician to correct the problem.



1 Open the electrical service panel.



2 With the breaker's switch in the ON position, press the TEST button.



3 It should trip, causing the switch to move to either the OFF position or the TRIP position if the breaker includes one.



4 If it trips, it is working. Turn it OFF and then ON again to reset.



5 If it does not trip, contact a licensed electrician to replace it.

AFCI

In the US, arcing faults cause about **30,000** home fires each year, resulting in hundreds of deaths and injuries and more than **\$862 million** in property damage.**