



**Workplace Safety**  
**Workplace Injury & Fatality Statistics**

Compiled by the Electrical Safety Foundation International using data from the U.S. Department of Labor, Bureau of Labor Statistics, in cooperation with State, New York City, District of Columbia, and Federal agencies, CFOI, 2003-2018



## Workplace Injury & Fatality Statistics

### Tables

- Table 01 - Fatalities by Events 2003 – 2018
- Table 02 - Fatalities by Events and Nature of Injury 2011 – 2018
- Table 03 - Electrical Fatalities in Selected Industries by EVENT Private Industry 2003 – 2018
- Table 04 - Nonfatal Electrical Injuries Involving Days Away from Work by Event Private Industry 1992 – 2018
- Table 05 - Median Numbers of Days Away from Work Nonfatal Injuries 2011 – 2018
- Table 06 - Fatal Occupational Injuries by Selected Worker Characteristics and Selected Event or Exposure 2011 – 2018
- Table 07 - Exposure - Nonfatal Occupational Injuries and Illnesses by Selected Worker Characteristics and Selected Event or Exposure 2011 – 2018
- Table 08 - Shock - Nonfatal Occupational Injuries and Illnesses by Selected Worker Characteristics and Selected Event or Exposure 2011 – 2018
- Table 09 - Burn - Nonfatal Occupational Injuries and Illnesses by Selected Worker Characteristics and Selected Event or Exposure 2011 – 2018

### Charts:

- Chart 01 - Fatalities by Events 2003 – 2018
- Chart 02 - Nonfatal Electrical Injuries Involving Days Away from Work by Event Private Industry 1992 - 2018
- Chart 03 - Electrical Fatality Rates for Selected Industries Private Industry 2003 – 2018
- Chart 04 - Number of Nonfatal Electrical Injuries Private Industry by Nature of Injury Electrical Shocks Electrical Burns 2003 – 2018
- Chart 05 - Fatality Rates for All Events vs Electrical Events All Ownerships 2003 – 2018
- Chart 06 - Rates of Nonfatal Electrical Injury Involving Days Away from Work for Selected Industries by Event Private Industry 2003 – 2018
- Chart 07 - Electrical Fatalities by Age Group as a Percentage of Fatalities from All Events All ownerships 2011 – 2018
- Chart 08 - Number of Electrical Fatalities by Selected Industry Group as a Percentage of Total Electrical Fatalities 2003 – 2018
- Chart 09 - Rate of Nonfatal Electrical Shock Injury Involving Days Away from Work for Selected Industries Private Industry 2003 – 2018
- Chart 10 - Rate of Nonfatal Electrical Burn Injury Involving Days Away from Work for Selected Industries Private Industry 2003 - 2018

**Table 1**

<b>Fatalities by Event, all ownerships, 2003 - 2018</b>																		
<b>Rank</b>	<b>Event or Exposure</b>	<b>2003</b>	<b>2004</b>	<b>2005</b>	<b>2006</b>	<b>2007</b>	<b>2008</b>	<b>2009</b>	<b>2010</b>	<b>2011</b>	<b>2012</b>	<b>2013</b>	<b>2014</b>	<b>2015</b>	<b>2016</b>	<b>2017</b>	<b>2018</b>	<b>Fatalities</b>
1	Transportation, excluding water, rail, air	2,041	2,118	2,173	2,081	2,057	1,829	1,516	1,600	1,670	1,695	1,628	1,737	1,821	1,855	1,835	1,841	<b>29,497</b>
2	Assaults and Violent Acts	902	809	792	788	864	816	837	832	791	803	773	765	703	866	807	828	<b>12,976</b>
3	Falls	696	822	770	827	847	700	645	646	681	704	724	818	800	849	887	791	<b>12,207</b>
4	Struck by object or	531	602	607	589	504	520	420	404	476	519	509	503	519	553	503	566	<b>8,325</b>
5	Exposure to harmful substances or environments,	240	210	250	297	285	247	234	250	245	184	194	236	290	364	395	461	<b>4,382</b>
6	Caught in or compressed by equipment or objects	238	269	278	283	296	302	233	228	145	124	131	132	99	117	108	137	<b>3,120</b>
7	Contact with / Exposure to electric current	246	254	251	250	212	192	170	164	174	156	141	154	134	154	136	160	<b>2,948</b>
8	Aircraft	211	231	149	217	174	191	159	152	145	127	136	135	139	130	126	133	<b>2,555</b>
9	Caught in or crushed in collapsing materials	126	117	109	108	108	100	80	91	84	73	78	74	90	82	70	73	<b>1,463</b>
10	Exposions	75	75	65	99	75	80	60	80	82	88	67	84	75	55	85	71	<b>1,216</b>
11	Water Vehicle	69	91	88	96	71	76	86	60	72	63	60	55	44	48	68	58	<b>1,105</b>
12	Railway	43	50	83	65	49	34	34	45	50	38	41	57	50	50	48	48	<b>785</b>
	Other	157	116	119	140	115	127	77	138	78	54	103	71	72	67	79	83	<b>1,596</b>
	<b>Total Fatalities (all causes)</b>	<b>5,575</b>	<b>5,764</b>	<b>5,734</b>	<b>5,840</b>	<b>5,657</b>	<b>5,214</b>	<b>4,551</b>	<b>4,690</b>	<b>4,693</b>	<b>4,628</b>	<b>4,585</b>	<b>4,821</b>	<b>4,836</b>	<b>5,190</b>	<b>5,147</b>	<b>5,250</b>	<b>82,175</b>

Compiled by the Electrical Safety Foundation International using data from the U.S. Bureau of Labor Statistics, CFOI, 2003-2018

**Table 2**

<b>Electrical Fatalities by Event and Nature of Injury, All Ownerships, 2011 - 2018</b>									
<b>Event</b>	<b>Event Code</b>	<b>Electrical Shock</b>							
		<b>2011</b>	<b>2012</b>	<b>2013</b>	<b>2014</b>	<b>2015</b>	<b>2016</b>	<b>2017</b>	<b>2018</b>
Exposure to electricity	51	171	154	135	146	130	150	135	159
Direct Exposure to Electricity	511	94	75	83	81	81	86	78	81
Direct Exposure to Electricity, 220 Volts or less	5111	26	18	26	24	27	29	30	19
Direct Exposure to Electricity, Greater than 220 Volts	5112	55	52	48	54	52	51	48	49
Indirect Exposure to Electricity	512	73	73	49	65	47	62	55	73
Indirect Exposure to Electricity, 220 Volts or Less	5121	11	5	5	7	7	5	8	7
Indirect Exposure to Electricity, Greater than 220 Volts	5122	60	66	41	58	40	56	47	65
<b>Event</b>	<b>Event Code</b>	<b>Electrical Burns</b>							
		<b>2011</b>	<b>2012</b>	<b>2013</b>	<b>2014</b>	<b>2015</b>	<b>2016</b>	<b>2017</b>	<b>2018</b>
Exposure to electricity	51	3	-	6	7	-	-	-	-
Direct Exposure to Electricity	511	1	-	2	5	-	-	-	-
Direct Exposure to Electricity, 220 Volts or less	5111	-	-	-	-	-	-	-	-
Direct Exposure to Electricity, Greater than 220 Volts	5112	1	-	2	5	-	-	-	-
Indirect Exposure to Electricity	512	-	-	3	-	-	-	-	-
Indirect Exposure to Electricity, 220 Volts or Less	5121	-	-	-	-	-	-	-	-
Indirect Exposure to Electricity, Greater than 220 Volts	5122	-	-	-	-	-	-	-	-

Rows, columns may not sum to total.

Dashes [ - ] indicate no data or data that do not meet BLS publication criteria.

Compiled by the Electrical Safety Foundation International using data from the U.S. Bureau of Labor Statistics, CFOI, 2011-2018

**Table 3**

<b>Number of Electrical Fatalities in Selected Industries, by EVENT, Private Industry, 2003 - 2018</b>																	
<b>Industry Sector</b>	<b>2003</b>	<b>2004</b>	<b>2005</b>	<b>2006</b>	<b>2007</b>	<b>2008</b>	<b>2009</b>	<b>2010</b>	<b>2011</b>	<b>2012</b>	<b>2013</b>	<b>2014</b>	<b>2015</b>	<b>2016</b>	<b>2017</b>	<b>2018</b>	<b>Total</b>
<b>Construction</b>	132	122	107	126	108	89	89	76	69	66	71	74	81	82	71	86	1,449
<b>Professional and Business Services</b>	23	29	39	21	25	27	24	20	23	30	20	19	18	28	20	29	395
<b>Trade, Transporations, and Utilities</b>	17	30	29	32	19	19	18	19	16	16	13	16	9	9	12	6	280
<b>Natural Resources and Mining</b>	16	20	27	27	24	13	9	18	24	21	14	15	9	11	7	16	271
<b>Manufacturing</b>	22	22	17	14	17	19	15	11	20	11	9	12	7	8	7	11	222
<b>Other Services</b>	7	6	10	6	5	5	5	-	5	-	5	-	-	4	4	5	67
<b>Leisure and Hospitality</b>	4	3	6	5	-	3	-	3	4	-	3	6	-	5	7	-	49
<b>Information</b>	3	6	4	3	-	-	-	4	3	1	-	-	-	-	-	-	24
<b>Financial Activities</b>	5	-	-	5	3	-	-	4	1	3	-	3	-	-	-	1	24
<b>Total</b>	<b>246</b>	<b>254</b>	<b>251</b>	<b>250</b>	<b>212</b>	<b>192</b>	<b>170</b>	<b>164</b>	<b>174</b>	<b>156</b>	<b>141</b>	<b>156</b>	<b>134</b>	<b>151</b>	<b>131</b>	<b>157</b>	<b>2,939</b>

Dashes [ - ] indicate no data or data that do not meet publication criteria.  
 Totals for major categories may include subcategories not shown separately.  
 Data may not sum to totals due to missing data or categories not shown.

Compiled by the Electrical Safety Foundation International using data from the U.S. Department of Labor, Bureau of Labor Statistics, in cooperation with State, New York City, District of Columbia, and Federal agencies, CFI, 2003-2018

**Table 4**

**Nonfatal Electrical Injuries Involving Days Away from  
Work, by Event, Private Industry, 1992 - 2018**

<b>Year</b>	<b>Total</b>
1992	4,806
1993	4,995
1994	6,018
1995	4,744
1996	4,126
1997	3,710
1998	3,910
1999	4,224
2000	3,704
2001	3,394
2002	2,967
2003	2,390
2004	2,650
2005	2,950
2006	2,620
2007	2,540
2008	2,490
2009	2,620
2010	1,890
2011	2,250
2012	1,700
2013	2,090
2014	1,850
2015	2,480
2016	1,640
2017	2,210
2018	1,560
<b>Total</b>	<b>82,528</b>

Compiled by the Electrical Safety Foundation International using data from the  
U.S. Bureau of Labor Statistics, CFOI, 1992-2018

**Table 5**

<b>Median Number of Days Away from Work for NonFatal Electrical injuries, by Event, Private Industry, 2011 - 2018</b>									
<b>Event</b>	<b>Event Code</b>	<b>Electrocutions, Electric Shocks</b>							
		<b>2011</b>	<b>2012</b>	<b>2013</b>	<b>2014</b>	<b>2015</b>	<b>2016</b>	<b>2017</b>	<b>2018</b>
Exposure to electricity	51	6	4	16	4	5	5	10	4
Direct Exposure to Electricity	511	12	4	35	10	5	7	4	4
Direct Exposure to Electricity, 220 Volts or less	5111	6	4	3	9	5	2	4	4
Direct Exposure to Electricity, Greater than 220 Volts	5112	45	2	24	10	2	22	12	7
Indirect Exposure to Electricity	512	5	5	3	1	20	5	4	2
Indirect Exposure to Electricity, 220 Volts or Less	5121	2	9	2	1	5	5	4	2
Indirect Exposure to Electricity, Greater than 220 Volts	5122	5	6	63	10	49	2	20	22

Compiled by the Electrical Safety Foundation International using data from the U.S. Department of Labor, Bureau of Labor Statistics, in cooperation with State, New York City, District of Columbia, and Federal agencies, Census of Fatal Occupational Injuries, 2011-2018





Asian non-Hispanic	153	-	-	-	-	-	3	-	-
Native Hawaiian or Pacific Islander non-Hispanic	10	-	-	-	-	-	-	-	-
Person of multiple races non-Hispanic	14	-	-	-	-	-	-	-	-
Other races or not reported non-Hispanic	50	-	-	-	-	-	-	-	-
<b>Primary Source (4) (5):</b>									
Chemicals and Chemical products	373	-	-	-	-	-	-	-	-
Containers, Furniture, and Fixtures	84	7	3	-	8	7	6	-	-
Machinery	374	26	29	17	16	15	26	14	22
Agriculture and Gardan Machinery	62	1	3	-	-	-	-	1	-
Construction, Logging, and Mining Machinery	148	4	3	4	3	-	-	-	4
Material and Personnel Handling Machinery	99	8	9	-	4	8	8	5	5
Parts and Materials	216	84	71	79	66	72	58	73	66
Machine Tool and Electric Parts	74	74	58	71	60	66	55	64	58
Persons, Plants, Animals, and Minerals	1,041	7	3	4	-	-	5	1	6
Person-other than Injured or Ill Worker	476	1	-	-	-	-	-	-	-
Relative or Domestic Partner of Injured or Ill Worker	33	-	-	-	-	-	-	-	-
Co-worker or work associate of Injured or Ill Worker	85	1	-	-	-	-	-	-	-
Assilant, Suspect, Inmate	228	-	-	-	-	-	-	-	-
Robber	107	-	-	-	-	-	-	-	-
Plants, Trees, Vegetation -- not Processed	166	6	3	4	-	-	5	1	6
Tree, Logs, Limbs	147	6	3	4	-	-	5	1	6
Structures and Surfaces	580	6	7	5	9	3	-	4	6
Buildings -- Office, Plant, Residential	44	-	-	-	-	-	-	-	-
Structures other than Buildings	107	-	4	-	7	-	1	4	4
Scaffold Staging	62	2	-	-	-	-	1	1	-
Other Structural Elements	174	-	1	-	-	-	-	-	-
Roofs	138	-	-	-	-	-	-	-	-
Tool, Instruments and Equipment	189	29	21	20	27	22	29	24	27
Ladders	145	9	11	4	8	10	11	6	9
Vehicles	2,270	11	16	13	22	5	14	9	22
Highway Vehicles Motorized	1,720	8	14	11	20	4	12	7	17
Passenger Vehicles -- Automobiles, Buses, and Passenger Vans	354	-	-	-	-	-	-	-	-
Trucks -- motorized, freigh hauling, and utility	999	7	14	11	18	4	12	7	16



<b>Multiple Traumatic Injuries and Disorders</b>	1,999	-	-	-	-	3	-	-	-
Burns and other Injuries except Fractures	100	-	-	-	-	-	-	-	-
Intracranial Injuries and Injuries to Internal Organs	301	-	-	-	-	-	-	-	-
<b>Other Traumatic Injuries and Disorders</b>	1,504	171	154	135	146	130	150	135	159
Asphyxiations, Strangulations, Suffocations	290	-	-	-	-	-	-	-	-
Drownings	142	-	-	-	-	-	-	-	-
Electrouctions, Electric Shocks	161	171	154	135	146	130	150	135	159
Internal Injuries to Organs and Blood Vessels of the Trunk	501	-	-	-	-	-	-	-	-
Other Poisoning, Toxic, Noxious, or Allergenic Effects	400	-	-	-	-	-	-	-	-
<b>Part of Body (4):</b>									
Head	992	-	-	-	-	-	-	-	-
Neck including Throat	248	-	-	-	-	-	-	-	-
Trunk	826	-	-	-	-	-	-	-	-
Chest including Ribs, Internal Organs	378	-	-	-	-	-	-	-	-
Back including Spine, Spinal Cord	78	-	-	-	-	-	-	-	-
Upper Extremities	20	-	-	-	-	-	-	-	-
Lower Extremities	73	1	-	-	-	-	-	-	-
Body Systems	862	171	154	136	147	131	151	135	159
Multiple BodyParts	2,223	-	-	5	7	3	3	-	-
Head and Neck	140	-	-	-	-	-	-	-	-
Head, Neck, and Trunk	111	-	-	-	-	-	-	-	-
Head and Trunk	323	-	-	-	-	-	-	-	-
Other Multiple Body Parts	519	-	-	-	4	3	1	-	-
Whole Body	67	-	-	-	-	-	-	-	-
<b>Worker Activity:</b>									
Vehicular and Transporations Operations	2,122	5	-	-	10	5	7	3	5
Using or Operating Tools, Machinery	392	41	33	28	34	22	29	30	36
Constructing, Repairing, Cleaning	968	102	94	92	88	85	97	86	100
Protective Service Activities	149	-	-	-	1	-	1	-	-
Material Handling Operations	257	16	17	12	13	17	10	14	15
Physical Activities	321	4	5	4	5	3	6	1	4
Other Activities	466	-	-	-	3	-	-	-	-

<b>Tending a Retail Establishment Waiting on Customers</b>	156	-	-	-	-	-	1	-	-
<b>Location:</b>									
<b>Private Residence</b>	599	49	46	44	52	40	57	46	56
<b>Farm</b>	384	23	16	9	10	11	10	7	11
<b>Mine and Quarry</b>	36	-	-	1	3	-	-	-	3
<b>Industrial Place and Premises</b>	1,108	50	47	46	46	40	45	36	42
<b>Place for Recreation and Sport</b>	80	3	-	-	3	5	6	4	-
<b>Street and Highway</b>	1,717	21	18	18	19	17	16	17	21
<b>Public Building</b>	578	20	11	12	14	10	15	15	16
<b>Residential Institution</b>	47	-	-	-	-	1	-	1	1
<b>Occupation (7):</b>									
<b>Management Occupations</b>	387	5	9	4	8	3	5	5	3
<b>Business and Financial Operations Occupations</b>	38	-	-	-	-	-	-	-	-
<b>Computer and Mathematical Occupations</b>	12	-	-	-	-	-	-	-	-
<b>Architecture and Engineering Occupations</b>	30	-	3	-	-	-	1	-	-
<b>Life, Physical, and Social Science Occupations</b>	18	-	1	-	-	-	1	-	-
<b>Community and Social Service Occupations</b>	23	-	-	-	-	-	-	-	-
<b>Legal Occupations</b>	15	-	-	-	-	-	-	-	-
<b>Education, Training, and Library Occupations</b>	27	-	-	-	-	-	-	-	-
<b>Arts, Design, Entertainment, Sports, and Media Occupations</b>	71	-	-	1	-	-	-	-	-
<b>Healthcare Practitioners and Technical Occupations</b>	65	-	-	-	-	-	-	-	-
<b>Healthcare Support Occupations</b>	32	-	-	-	-	-	-	-	-
<b>Protective Service Occupations</b>	270	-	-	-	-	1	2	-	-
<b>Food Preparations and Serving Related Occupations</b>	100	-	-	-	1	-	-	-	-
<b>Building and Grounds Cleaning and Maintenance Occupations</b>	350	21	19	16	17	11	23	19	24
<b>Personal Care and Service Occupations</b>	63	-	-	-	-	-	-	-	-
<b>Sales and Related Occupations</b>	241	-	-	-	-	-	1	-	-
<b>Office and Administrative Support Occupations</b>	69	-	-	-	-	-	-	-	-
<b>Farming, Fishing, and Forestry Occupations</b>	262	15	8	7	5	4	3	4	8
<b>Construction and Extraction Occupations</b>	1,003	69	76	65	68	68	69	56	75
<b>Installation, Maintenance, and Repair Occupations</b>	420	37	32	31	33	31	38	35	34

<b>Production Occupations</b>	225	11	3	6	8	8	6	6	6
<b>Transportations and Material Moving Occupations</b>	1,443	8	5	3	10	7	-	4	10
<b>Military Specific Occupations (8)</b>	82	-	-	-	-	-	-	1	-
<b>Industry (9):</b>									
<b>Private Industry</b>	4,779	166	152	137	147	130	151	131	157
<b>Goods producing</b>	2,055	113	98	94	101	97	101	85	113
<b>Natural Resources and Mining (10)</b>	704	24	21	14	15	9	11	7	16
<b>Constructions</b>	1,008	69	66	71	74	81	82	71	86
<b>Manufacturing</b>	343	20	11	9	12	7	8	7	11
<b>Service-Providing</b>	2,724	53	54	43	46	33	50	46	44
<b>Trade, Transportation, and Utilities</b>	1,379	16	16	13	16	9	9	12	6
<b>Information</b>	31	3	1	-	-	-	-	-	-
<b>Financial Activities</b>	108	1	3	-	3	-	-	-	1
<b>Professional and Business Services</b>	585	23	30	20	19	18	28	20	29
<b>Education and Health Services</b>	168	-	-	-	-	-	-	1	-
<b>Leisure and Hospitality</b>	253	4	-	3	6	-	5	7	-
<b>Other Services</b>	195	5	-	5	-	-	4	4	5
<b>Government (11)</b>									
<b>Federal Government</b>	471	8	4	4	7	4	3	5	3
<b>State Government</b>	124	-	-	-	-	-	-	-	-
<b>Local Government</b>	69	3	-	-	-	2	1	-	-
<b>Local Government</b>	276	5	-	3	6	-	-	3	3

**Footnotes**

(1) May include volunteers and workers receiving other types of compensation.

(2) Includes self-employed workers owners of unincorporated businesses and farms paid and unpaid family workers and may include some owners of incorporated businesses or members of partnerships.

(3) Persons identified as Hispanic or Latino may be of any race. The race categories shown exclude data for Hispanics and Latinos.

(4) Based on the BLS Occupational Injury and Illness Classification System (OIICS) 2.01 implemented for 2011 data forward.

(5) The primary source of a fatal occupational injury is the object substance person bodily motion or exposure which most directly led to produced or inflicted the injury or illness.

(6) The secondary source of a fatal occupational injury is the object substance person or exposure other than the source if any which most actively generated the source or contributed to the injury or illness.

(7) CFOI has used several versions of the Standard Occupation Classification (SOC) system since 2003 to define occupation. For more information on the version of SOC used in this year see our definitions page: <http://www.bls.gov/iif/oshcdef.htm>.

(8) Includes fatal injuries to persons identified as resident armed forces regardless of individual occupation listed.

(9) CFOI has used several versions of the North American Industry Classification System (NAICS) since 2003 to define industry. For more information on the version of NAICS used in this year see our definitions page: <http://www.bls.gov/iif/oshcdef.htm>.

(10) Includes fatal injuries at all establishments categorized as Mining (Sector 21) in the North American Industry Classification System including establishments not governed by the Mine Safety and Health Administration (MSHA) rules and reporting such as those in Oil and Gas Extraction.

(11) Includes all fatal occupational injuries meeting this ownership criterion across all specified years regardless of industry classification system.

NOTE: Totals for major categories may include subcategories not shown separately. Dashes indicate no data reported or data that do not meet publication criteria. N.e.c. means "not elsewhere classified." CFOI fatality counts exclude illness-related deaths unless precipitated by an injury event. Data for all years are final unless footnoted by "P" for preliminary data.

SOURCE: U.S. Department of Labor, Bureau of Labor Statistics, in cooperation with State, New York City, District of Columbia, and Federal agencies, Census of Fatal Occupational Injuries, Dec 19, 2019

Table 7

Number of NonFatal Occupational Injuries and Illnesses Involving Days Away from Work (1) by Selected Worker and Case Characteristics and Event or Exposure. All of U.S., Private Industry, 2011 - 2018

Characteristic	All Events	Exposure to Electricity Code (51XXXX)							
	2017	2011	2012	2013	2014	2015	2016	2017	2018
<b>Total:</b>	900,380	2,250	1,700	2,090	1,850	2,480	1,640	2,210	1,560
<b>Gender:</b>									
Men	541,330	1,910	1,400	1,750	1,530	2,190	1,290	1,650	1,190
Women	353,440	350	280	330	310	270	330	550	350
<b>Age:</b>									
Under 14	-	-	-	-	-	-	-	-	-
14 - 15	250	-	-	-	-	-	-	-	-
16 - 19	25,780	30	-	40	80	20	30	20	30
20 - 24	88,840	280	250	230	210	260	360	80	80
25 - 34	191,650	520	480	450	560	590	470	850	410
35 - 44	174,020	560	300	660	580	590	380	480	440
45 - 54	193,650	640	430	500	270	540	190	290	210
55 - 64	168,520	150	110	190	140	450	150	470	350
65 Years and Over	42,550	20	70	-	-	-	-	20	20
<b>Occupation (6):</b>									
Management, Business, Financial	29,000	50	90	20	-	40	30	30	30
Computer, Engineering and Science	5,860	30	30	30	30	20	20	40	40
Education, Legal, Community Service, Arts, and Media	25,100	-	-	-	40	-	-	-	70
Healthcare Practitioners and Technical	50,810	30	30	80	20	40	20	370	30
Service	213,440	380	200	380	270	760	280	740	350
Sales and Related	59,610	30	50	30	60	60	80	40	40
Office and Administrative Support	64,800	50	60	30	20	70	30	-	20
Farming, Fishing, and Forestry	15,390	20	-	20	-	-	30	-	-

<b>Construction and Extraction</b>	73,630	580	350	460	600	570	420	330	200
<b>Installation, Maintenance, and Repair</b>	79,380	700	560	800	450	580	430	350	390
<b>Production</b>	98,140	220	240	160	240	300	210	150	190
<b>Transporation and Material Moving</b>	184,470	130	90	60	90	30	90	140	90
<b>Length of Service with Employer:</b>									
<b>Less than 3 Months</b>	106,980	260	170	180	120	350	160	410	140
<b>3 Months to 11 Months</b>	193,320	410	310	380	550	500	530	280	320
<b>1 year to 5 Years</b>	314,120	710	620	970	680	800	550	1,050	510
<b>More Than 5 Years</b>	273,470	820	580	540	470	810	350	450	560
<b>Race or Ethnic Origin (3):</b>									
<b>White</b>	298,030	1,420	750	680	810	1,180	650	1,300	520
<b>Black or African American</b>	71,600	160	120	120	160	290	170	180	110
<b>Hispanic or Latino</b>	123,390	200	210	190	290	340	200	190	210
<b>Asian</b>	12,750	-	40	-	-	20	-	-	-
<b>Native Hawaiian or Pacific Islander</b>	2,300	-	-	-	-	-	-	-	-
<b>American indian or Alaska Native</b>	3,270	-	30	-	40	30	-	-	-
<b>Hispanic and Other</b>	1,060	-	-	-	-	-	-	-	-
<b>Multi-Race</b>	780	-	-	-	-	-	-	-	-
<b>Not Reported</b>	387,220	450	550	1,090	540	630	610	530	700
<b>Number of Days Away from Work</b>									
<b>Cases Involving 1 Day</b>	123,950	350	570	280	630	330	330	570	300
<b>Cases Involving 2 Days</b>	97,350	400	160	370	220	400	260	210	280
<b>Cases Involving 3 - 5 Days</b>	158,540	330	250	190	170	530	250	290	340
<b>Cases Involving 6 - 10 Days</b>	107,620	220	190	120	150	120	230	50	150
<b>Cases Involving 11 - 20 Days</b>	95,440	270	110	120	120	340	50	150	150
<b>Cases Involving 21 - 30 Days</b>	54,370	170	60	100	110	100	110	220	70
<b>Cases Involving 31 or More Days</b>	263,100	530	370	900	450	650	410	730	270
<b>Median Days Away from Work</b>	8	6	4	16	4	5	5	10	4
<b>Industry Sector:</b>									
<b>Goods Producing Industries (2)</b>	217,570	1,030	600	780	1,040	1,170	860	710	680
<b>Natural Resources and Mining (2) (3)</b>	21,500	30	-	70	30	50	100	90	120





<b>Amputations</b>	5,920	-	-	-	-	-	-	-	-
<b>Cuts, Lacerations, Punctures</b>	92,840	-	-	-	-	-	-	-	-
<b>Cuts, Lacerations</b>	77,340	-	-	-	-	-	-	-	-
<b>Punctures (Except Gunshot Wounds)</b>	15,500	-	-	-	-	-	-	-	-
<b>Bruises, Contusions</b>	79,250	-	-	-	-	-	-	-	-
<b>Chemical Burns, and Corrosions</b>	3,790	-	-	-	-	-	-	-	-
<b>Heat (Thermal) Burns</b>	14,550	-	-	-	-	-	-	-	-
<b>Multiple Traumatic Injuries</b>	23,370	-	-	-	-	-	-	-	-
<b>With Sprains and Other Injuries</b>	12,340	-	-	-	-	-	-	-	-
<b>With Fractures and Other Injuries</b>	3,350	-	-	-	-	-	-	-	-
<b>Soreness, Pain</b>	159,600	-	-	-	-	-	-	-	-
<b>Carpal tunnel Syndrome</b>	5,050	-	-	-	-	-	-	-	-
<b>Tendonitis</b>	1,810	-	-	-	-	-	-	-	-
<b>All Other</b>	126,100	2,250	1,690	2,090	1,850	2,480	1,640	2,210	1,550
<b>Part of Body Affected (8):</b>									
<b>Head</b>	77,660	70	80	60	260	70	30	40	-
<b>Eye</b>	19,950	40	40	20	-	50	20	-	-
<b>Neck</b>	11,140	-	-	-	-	-	-	-	-
<b>Trunk</b>	194,080	-	-	20	-	-	-	-	20
<b>Back</b>	142,230	-	-	-	-	-	-	-	-
<b>Upper Extremities</b>	286,810	650	500	220	270	290	410	660	360
<b>Shoulder</b>	68,070	-	-	-	-	-	-	-	-
<b>Arm</b>	43,650	110	90	40	40	30	90	40	30
<b>Wrist</b>	34,760	-	-	-	-	50	-	-	-
<b>Hand</b>	123,990	360	370	130	180	210	250	550	250
<b>Lower Extremities</b>	215,500	-	-	-	-	40	20	-	-
<b>Knee</b>	79,380	-	-	-	-	-	-	-	-
<b>Ankle</b>	49,210	-	-	-	-	-	-	-	-
<b>Foot</b>	47,180	-	-	-	-	-	-	-	-
<b>Toe, Toenail</b>	10,880	-	-	-	-	-	-	-	-
<b>Body Systems</b>	17,370	1,200	940	1,520	1,070	1,890	940	1,330	1,070
<b>Multiple</b>	87,790	310	130	270	240	150	230	160	80
<b>All Other</b>	10,020	-	30	-	-	30	-	-	-

<b>Source of Injury, Illness (8):</b>									
<b>Chemicals, Chemical Products</b>	12,440	-	-	-	-	-	-	-	30
<b>Containers</b>	108,130	20	-	-	-	-	-	-	20
<b>Furniture Fixtures</b>	40,280	60	50	100	60	210	50	40	30
<b>Machinery</b>	51,000	420	380	410	250	480	360	1,100	310
<b>Parts and Materials</b>	77,630	1,290	990	1,370	1,270	1,090	1,030	830	850
<b>Person, Injured, or Ill Worker</b>	122,030	-	-	-	-	-	-	-	-
<b>Worker Motion or Position</b>	117,010	-	-	-	-	-	-	-	-
<b>Person other than Injured or Ill Workers</b>	65,650	110	-	-	-	-	-	-	-
<b>Health Care Patient</b>	46,980	-	-	-	-	-	-	-	-
<b>Floors, Walkways, Ground Surfaces</b>	146,750	-	-	-	-	-	-	-	-
<b>Handtools</b>	43,910	150	60	30	40	270	60	30	210
<b>Ladders</b>	20,250	-	-	-	-	-	-	-	-
<b>Vehicles</b>	100,740	40	50	20	-	-	-	30	20
<b>Trucks</b>	26,060	-	40	-	-	-	-	-	-
<b>Cart, Dolly, Hand Truck -- Nonpowered</b>	14,280	-	-	-	-	-	-	-	-
<b>All Other</b>	111,580	170	140	120	190	410	110	120	90

<b>Secondary Source of Injury, Illness (8):</b>									
<b>Containers, Furniture and Fixtures</b>	-	60	-	-	-	-	-	-	-
<b>Machinery</b>	-	80	20	20	-	30	50	-	-
<b>Computer and Peripheral Equipment</b>	-	-	-	-	-	-	-	-	-
<b>Tools, Instruments, and Equipment</b>	-	30	-	-	70	-	30	-	-
<b>Firearms, Law Enforcement, and Other Self-Defense Equipment</b>	-	-	-	-	-	-	-	-	-
<b>Vehicles</b>	-	-	-	-	-	-	-	-	-
<b>Highway Vehicle Motorized</b>	-	-	-	-	-	-	-	-	-
<b>Ice, Sleet, Snow</b>	-	-	-	-	-	-	-	-	-
<b>Liquid - NonChemical</b>	-	30	-	50	-	-	-	-	-

<b>Day of Week</b>									
<b>Sunday</b>	59,200	40	50	140	100	170	40	60	100
<b>Monday</b>	160,490	350	280	290	380	430	270	300	320
<b>Tuesday</b>	154,560	460	260	420	330	390	440	300	220
<b>Wednesday</b>	158,410	430	310	240	230	320	210	190	340

<b>Thursday</b>	153,170	460	390	630	250	560	220	600	230
<b>Friday</b>	140,670	370	230	270	480	240	260	530	220
<b>Saturday</b>	73,880	140	180	100	90	380	210	230	130

<b>Time of Day:</b>									
<b>12:01 AM - 4:00 AM</b>	28,150	40	40	30	50	50	20	30	30
<b>4:01 AM - 8:00 AM</b>	85,830	230	160	130	170	480	150	160	70
<b>8:01 AM - 12:00 PM</b>	247,040	920	630	870	500	740	470	630	570
<b>12:01 PM - 4:00 PM</b>	202,560	460	400	510	680	380	460	670	320
<b>4:01 PM - 8:00 PM</b>	105,040	180	190	210	210	210	210	230	200
<b>8:01 PM - 12:00 AM</b>	54,260	90	100	40	100	160	70	70	250
<b>Not Reported</b>	177,490	350	170	290	150	460	260	440	110

<b>Hours Worked:</b>									
<b>Occurred Before Shift Began</b>	6,710	-	-	-	-	-	-	-	-
<b>Less than 1 Hour</b>	73,070	310	180	90	60	490	80	170	140
<b>1 - 2 Hours</b>	83,540	170	100	130	120	260	110	150	90
<b>2 - 4 Hours</b>	181,480	550	470	820	340	370	310	330	370
<b>4 - 6 Hours</b>	142,930	300	250	280	640	340	280	540	320
<b>6 - 8 Hours</b>	123,570	350	300	230	350	290	250	300	240
<b>8 - 10 Hours</b>	62,030	130	80	160	50	180	200	60	140
<b>10 - 12 Hours</b>	18,900	40	80	30	70	-	30	30	50
<b>12 - 16 Hours</b>	9,790	-	-	-	20	20	60	130	-
<b>More Than 16 Hours</b>	1,600	-	-	-	-	-	-	-	-
<b>Not Reported</b>	196,770	410	210	330	190	530	300	500	220

**Footnotes**

(1) Days away from work include those that result in days away from work with or without job transfer or restriction.

(2) Standard Occupational Classification Manual, 2010, Office of Management and Budget

(3) Median days away from work is the measure used to summarize the varying lengths of absences from work among the cases with days away from work. Half the cases involved more days and half involved less days than a specified median. Median days away from work are represented in actual values.

(4) Excludes farms with fewer than 11 employees.

(5) Data for mining (Sector 21 in the North American Industry Classification System -- United States, 2007) include establishments not governed by the Mine Safety and Health Administration (MSHA) rules and reporting, such as those in oil and gas extraction and related support activities. Data for mining operators in coal, metal, and nonmetal mining are provided to BLS by the Mine Safety and Health Administration, U.S. Department of Labor. Independent mining contractors are excluded from the

coal, metal, and nonmetal mining industries. These data do not reflect the changes Occupational Safety and Health Administration made to its recordkeeping requirements effective January 1, 2002; therefore estimates for these industries are not comparable with estimates for other industries.

(6) Data for employers in railroad transportation are provided to BLS by the Federal Railroad Administration, U.S. Department of Transportation. These data do not reflect the changes Occupational Safety and Health Administration made to its recordkeeping requirements effective January 1, 2002; therefore estimates for these industries are not comparable with estimates for other industries.

(7) Musculoskeletal disorders (MSDs) include cases where the nature of the injury or illness is pinched nerve; herniated disc; meniscus tear; sprains, strains, tears; hernia (traumatic and nontraumatic); pain, swelling, and numbness; carpal or tarsal tunnel syndrome; Raynaud's syndrome or phenomenon; musculoskeletal system and connective tissue diseases and disorders, when the event or exposure leading to the injury or illness is overexertion and bodily reaction, unspecified; overexertion involving outside sources; repetitive motion involving microtasks; other and multiple exertions or bodily reactions; and rubbed, abraded, or jarred by vibration.

(8) Occupational Injury and Illness Classification System 2.01

NOTE: Because of rounding and data exclusion of nonclassifiable responses, data may not sum to the totals. Dashes indicate data that do not meet publication guidelines. The scientifically selected probability sample used was one of many possible samples, each of which could have produced different estimates. A measure of sampling variability for each estimate is available upon request -- please contact [iifstaff@bls.gov](mailto:iifstaff@bls.gov) or call (202) 691-6170. For additional information about methodology and coding structures, see the BLS Handbook of Methods chapter 9: <https://www.bls.gov/opub/hom/homch9.htm> .

SOURCE: Bureau of Labor Statistics, U.S. Department of Labor, Dec 5, 2019

Table 8

Number of NonFatal Occupational Injuries and Illnesses Involving Days Away from Work (1) by Selected Worker and Case Characteristics and Nature of Condition.  
All of U.S., Private Industry, 2011 - 2018

Characteristic	All Natures	Electrocutions, Electric Shocks (193XXX)							
	2018	2011	2012	2013	2014	2015	2016	2017	2018
<b>Total:</b>	900,380	1,290	980	1,530	1,080	1,910	960	1,330	1,080
<b>Gender:</b>									
Men	541,330	1,030	740	1,230	820	1,640	630	850	830
Women	353,400	250	240	300	250	250	310	470	230
<b>Age:</b>									
Under 14	-	-	-	-	-	-	-	-	-
14 - 15	250	-	-	-	-	-	-	-	-
16 - 19	25,780	30	-	30	80	20	30	-	-
20 - 24	88,840	170	200	170	160	180	270	40	60
25 - 34	191,650	280	290	330	380	500	250	660	300
35 - 44	174,020	220	200	570	240	400	180	310	230
45 - 54	193,650	440	180	320	160	460	110	190	180
55 - 64	168,520	80	50	120	60	330	90	120	290
65 Years and Over	42,550	-	-	-	-	-	-	-	-
<b>Occupation (6):</b>									
Management, Business, Financial	29,000	40	60	20	-	40	20	30	30
Computer, Engineering and Science	5,860	20	-	20	20	20	20	-	-
Education, legal, Community Service, Arts, and Media	25,100	-	-	-	40	-	-	-	-
Healthcare Practitioners and Technical	50,810	20	30	80	20	30	-	370	30
Service	213,440	310	130	300	260	730	240	390	310
Sales and Related	59,610	30	40	20	40	50	80	30	30
Office and Administrative Support	64,800	20	50	20	20	70	30	-	20
Farming, Fishing, and Forestry	15,390	-	-	20	-	-	30	-	-

<b>Construction and Extraction</b>	73,630	220	150	310	150	370	110	120	90
<b>Installation, Maintenance, and Repair</b>	79,380	370	250	530	260	330	210	190	260
<b>Production</b>	98,140	170	160	140	200	230	130	80	160
<b>Transportation and Material Moving</b>	184,470	60	80	60	70	30	70	90	40
<b>Length of Service with Employer:</b>									
<b>Less than 3 Months</b>	106,980	140	150	120	70	280	80	380	60
<b>3 Months to 11 Months</b>	193,320	240	170	320	220	440	290	160	240
<b>1 year to 5 Years</b>	314,120	370	350	790	500	570	320	510	420
<b>More Than 5 Years</b>	273,470	480	300	290	270	600	220	260	350
<b>Race or Ethnic Origin (3):</b>									
<b>White</b>	298,030	790	370	460	380	970	320	730	350
<b>Black or African American</b>	71,600	100	50	100	150	260	150	120	90
<b>Hispanic or Latino</b>	123,390	70	120	100	210	230	100	90	130
<b>Asian</b>	12,750	-	20	-	-	-	-	-	-
<b>Native Hawaiian or Pacific Islander</b>	2,300	-	-	-	-	-	-	-	-
<b>American Indian or Alaska Native</b>	3,270	-	30	-	-	-	-	-	-
<b>Hispanic and Other</b>	1,060	-	-	-	-	-	-	-	-
<b>Multi-Race</b>	780	-	-	-	-	-	-	-	-
<b>Not Reported</b>	387,220	330	390	860	300	430	380	380	500
<b>Number of Days Away from Work</b>									
<b>Cases Involving 1 Day</b>	123,950	290	420	220	350	270	270	490	210
<b>Cases Involving 2 Days</b>	97,350	270	140	350	180	370	180	120	250
<b>Cases Involving 3 - 5 Days</b>	158,540	220	100	90	140	440	200	240	270
<b>Cases Involving 6 - 10 Days</b>	107,620	90	80	70	60	80	90	30	50
<b>Cases Involving 11 - 20 Days</b>	95,440	100	40	70	50	190	20	70	100
<b>Cases Involving 21 - 30 Days</b>	54,370	70	20	20	60	50	60	180	30
<b>Cases Involving 31 or More Days</b>	263,100	240	160	720	240	510	140	210	170
<b>Median Days Away from Work</b>	8	4	2	16	3	5	3	3	3
<b>Industry Sector:</b>									
<b>Goods Producing Industries (2)</b>	217,570	460	320	570	440	840	380	310	480
<b>Natural Resources and Mining (2) (3)</b>	21,500	-	-	50	20	30	40	40	110

<b>Agriculture, Forestry, Fishing, and Hunting</b>	17,390	-	-	50	20	20	40	-	90
<b>Mining (3)</b>	4,110	-	-	-	-	-	-	-	-
<b>Construction</b>	77,490	190	140	340	170	610	150	140	160
<b>Manufacturing</b>	118,580	250	170	170	260	200	180	130	210
<b>Service Providing Industries</b>	682,810	830	660	970	640	1,060	580	1,030	600
<b>Trade, Transportation, and Utilities (4)</b>	290,300	330	250	550	180	210	230	180	200
<b>Wholesale Trade</b>	56,180	-	30	40	-	50	20	20	30
<b>Retail Trade</b>	126,850	250	90	480	90	120	170	80	130
<b>Transportations and Warehousing (4)</b>	103,620	60	90	20	40	20	30	50	50
<b>Utilities</b>	3,640	20	30	-	30	20	-	40	-
<b>Information</b>	15,580	30	-	20	60	60	30	20	70
<b>Financial Activities</b>	23,030	20	-	-	-	30	20	30	-
<b>Finance and Insurance</b>	7,040	-	-	-	-	20	20	-	-
<b>Real Estate and Rental and Leasing</b>	15,990	-	-	-	-	-	-	30	-
<b>Professional and Business Services</b>	67,490	90	160	70	70	120	70	350	30
<b>Professional Scientific and Tehnical Services</b>	16,300	30	40	-	-	-	30	280	-
<b>Management of Companies and Enterprises</b>	4,690	-	-	-	-	-	-	-	-
<b>Administrative and Support and Waste Management and Remediation Services</b>	46,500	60	110	30	50	110	30	70	20
<b>Education and Health Services</b>	167,160	120	60	170	160	380	60	150	90
<b>Educational Services</b>	11,590	-	-	-	-	-	-	-	-
<b>Health Care and Social Assistance</b>	155,570	110	60	150	160	370	50	140	80
<b>Leisure and Hospitality</b>	93,740	240	100	160	140	220	170	300	190
<b>Arts, Entertainment and Recreation</b>	15,970	20	30	-	-	60	-	150	40
<b>Accommodation and Food Services</b>	77,770	220	70	140	130	150	160	150	150
<b>Other Services</b>	25,510	-	70	-	-	50	-	-	-
<b>Other Services Except Public Administration</b>	25,510	-	70	-	-	50	-	-	-
<b>Public Administration</b>	-	-	-	-	-	-	-	-	-
<b>Musculoskeletal Disorders (7):</b>									
<b>Musculoskeletal Disorders</b>	272,780	-	-	-	-	-	-	-	-
<b>Event or Exposure (8):</b>									
<b>Violence and Other Injuries by Persons or Animal</b>	44,000	-	-	-	-	-	-	-	-
<b>Intentional Injury by Other Person</b>	20,790	-	-	-	-	-	-	-	-





<b>Body Systems</b>	17,370	1,200	940	1,520	1,070	1,900	960	1,330	1,070
<b>Multiple</b>	87,790	-	-	-	-	-	-	-	-
<b>All Other</b>	10,020	-	-	-	-	-	-	-	-
<b>Source of Injury, Illness (8):</b>									
<b>Chemicals, Chemical Products</b>	12,440	-	-	-	-	-	-	-	-
<b>Containers</b>	108,130	20	-	-	-	-	-	-	20
<b>Furniture Fixtures</b>	40,280	50	30	90	50	200	40	-	30
<b>Machinery</b>	51,000	380	320	360	200	400	270	710	250
<b>Parts and Materials</b>	77,630	610	430	930	610	640	510	470	530
<b>Person, Injured, or Ill Worker</b>	122,030	-	-	-	-	-	-	-	-
<b>Worker Motion or Position</b>	117,010	-	-	-	-	-	-	-	-
<b>Person other than Injured or Ill Workers</b>	65,650	-	-	-	-	-	-	-	-
<b>Health Care Patient</b>	46,980	-	-	-	-	-	-	-	-
<b>Floors, Walkways, Ground Surfaces</b>	146,750	-	-	-	-	-	-	-	-
<b>Handtools</b>	43,910	100	40	30	30	260	-	-	160
<b>Ladders</b>	20,250	-	-	-	-	-	-	-	-
<b>Vehicles</b>	100,740	40	40	-	-	-	-	20	20
<b>Trucks</b>	26,060	-	-	-	-	-	-	-	-
<b>Cart, Dolly, Hand Truck -- Nonpowered</b>	14,280	-	-	-	-	-	-	-	-
<b>All Other</b>	111,580	90	90	70	160	380	90	90	80
<b>Secondary Source of Injury, Illness (8):</b>									
<b>Containers, Furniture and Fixtures</b>	-	-	-	-	-	-	-	-	-
<b>Machinery</b>	-	60	-	-	-	-	-	-	-
<b>Computer and Peripheral Equipment</b>	-	-	-	-	-	-	-	-	-
<b>Tools, Instruments, and Equipment</b>	-	-	-	-	50	-	30	-	-
<b>Firearms, Law Enforcement, and Other Self-Defense Equipment</b>	-	-	-	-	-	-	-	-	-
<b>Vehicles</b>	-	-	-	-	-	-	-	-	-
<b>Highway Vehicle Motorized</b>	-	-	-	-	-	-	-	-	-
<b>Ice, Sleet, Snow</b>	-	-	-	-	-	-	-	-	-
<b>Liquid - NonChemical</b>	-	30	-	50	-	-	-	-	-
<b>Day of Week</b>									

<b>Sunday</b>	29,200	40	30	120	80	160	30	40	90
<b>Monday</b>	160,490	180	170	180	300	290	190	160	220
<b>Tuesday</b>	154,560	260	130	360	200	290	210	160	200
<b>Wednesday</b>	158,410	190	180	140	140	270	160	120	210
<b>Thursday</b>	153,170	270	180	540	180	420	110	220	170
<b>Friday</b>	140,670	270	120	110	110	130	140	420	90
<b>Saturday</b>	73,880	80	160	80	70	360	120	200	110

<b>Time of Day:</b>									
<b>12:01 AM - 4:00 AM</b>	28,150	30	-	30	20	50	-	-	20
<b>4:01 AM - 8:00 AM</b>	85,830	150	60	80	90	420	70	70	40
<b>8:01 AM - 12:00 PM</b>	247,040	520	380	690	290	560	300	370	330
<b>12:01 PM - 4:00 PM</b>	202,560	210	270	380	330	270	240	550	190
<b>4:01 PM - 8:00 PM</b>	105,040	100	130	180	180	160	100	190	170
<b>8:01 PM - 12:00 AM</b>	54,260	70	50	30	60	140	60	50	230
<b>Not Reported</b>	177,490	200	80	140	110	320	190	90	100

<b>Hours Worked:</b>									
<b>Occurred Before Shift Began</b>	6,710	-	-	-	-	-	-	-	-
<b>Less than 1 Hour</b>	73,070	140	60	60	40	440	60	110	60
<b>1 - 2 Hours</b>	83,540	110	60	80	50	180	90	60	70
<b>2 - 4 Hours</b>	181,480	380	300	710	190	260	190	220	280
<b>4 - 6 Hours</b>	142,930	160	140	200	270	250	180	420	210
<b>6 - 8 Hours</b>	123,570	200	200	190	280	250	130	230	190
<b>8 - 10 Hours</b>	62,030	20	70	100	30	150	50	20	50
<b>10 - 12 Hours</b>	18,900	-	70	20	70	-	-	-	30
<b>12 - 16 Hours</b>	9,790	-	-	-	-	-	-	130	-
<b>More Than 16 Hours</b>	1,600	-	-	-	-	-	-	-	-
<b>Not Reported</b>	196,770	250	90	150	120	370	250	140	180

Footnotes

(1) Days away from work include those that result in days away from work with or without job transfer or restriction.

(2) Standard Occupational Classification Manual, 2010, Office of Management and Budget

(3) Median days away from work is the measure used to summarize the varying lengths of absences from work among the cases with days away from work. Half the cases involved more days and half involved less days than a specified median. Median days away from work are represented in actual values.

(4) Excludes farms with fewer than 11 employees.

(5) Data for mining (Sector 21 in the North American Industry Classification System -- United States, 2007) include establishments not governed by the Mine Safety and Health Administration (MSHA) rules and reporting, such as those in oil and gas extraction and related support activities. Data for mining operators in coal, metal, and nonmetal mining are provided to BLS by the Mine Safety and Health Administration, U.S. Department of Labor. Independent mining contractors are excluded from the coal, metal, and nonmetal mining industries. These data do not reflect the changes Occupational Safety and Health Administration made to its recordkeeping requirements effective January 1, 2002; therefore estimates for these industries are not comparable with estimates for other industries.

(6) Data for employers in railroad transportation are provided to BLS by the Federal Railroad Administration, U.S. Department of Transportation. These data do not reflect the changes Occupational Safety and Health Administration made to its recordkeeping requirements effective January 1, 2002; therefore estimates for these industries are not comparable with estimates for other industries.

(7) Musculoskeletal disorders (MSDs) include cases where the nature of the injury or illness is pinched nerve; herniated disc; meniscus tear; sprains, strains, tears; hernia (traumatic and nontraumatic); pain, swelling, and numbness; carpal or tarsal tunnel syndrome; Raynaud's syndrome or phenomenon; musculoskeletal system and connective tissue diseases and disorders, when the event or exposure leading to the injury or illness is overexertion and bodily reaction, unspecified; overexertion involving outside sources; repetitive motion involving microtasks; other and multiple exertions or bodily reactions; and rubbed, abraded, or jarred by vibration.

(8) Occupational Injury and Illness Classification System 2.01

NOTE: Because of rounding and data exclusion of nonclassifiable responses, data may not sum to the totals. Dashes indicate data that do not meet publication guidelines. The scientifically selected probability sample used was one of many possible samples, each of which could have produced different estimates. A measure of sampling variability for each estimate is available upon request -- please contact [iifstaff@bls.gov](mailto:iifstaff@bls.gov) or call (202) 691-6170. For additional information about methodology and coding structures, see the BLS Handbook of Methods chapter 9: <https://www.bls.gov/opub/hom/homch9.htm> .

SOURCE: Bureau of Labor Statistics, U.S. Department of Labor, Dec 5, 2019



<b>Construction and Extraction</b>	73,630	390	210	150	460	190	310	220	100
<b>Installation, Maintenance, and Repair</b>	79,380	340	310	270	190	250	260	170	150
<b>Production</b>	98,140	50	80	20	40	70	80	70	30
<b>Transportation and Material Moving</b>	184,470	70	-	-	20	-	40	50	50
<b>Length of Service with Employer:</b>									
<b>Less than 3 Months</b>	106,980	120	20	60	50	80	110	30	70
<b>3 Months to 11 Months</b>	193,320	200	140	60	340	60	240	120	90
<b>1 year to 5 Years</b>	314,120	350	270	190	180	230	230	550	90
<b>More Than 5 Years</b>	273,470	350	300	250	200	220	160	190	220
<b>Race or Ethnic Origin (3):</b>									
<b>White</b>	298,030	650	380	220	430	210	370	570	180
<b>Black or African American</b>	71,600	60	60	20	20	20	40	70	20
<b>Hispanic or Latino</b>	123,390	150	100	90	80	100	100	100	80
<b>Asian</b>	12,750	-	20	-	-	20	-	-	-
<b>Native Hawaiian or Pacific Islander</b>	2,300	-	-	-	-	-	-	-	-
<b>American Indian or Alaska Native</b>	3,270	-	-	-	-	30	-	-	-
<b>Hispanic and Other</b>	1,060	-	-	-	-	-	-	-	-
<b>Multi-Race</b>	780	-	-	-	-	-	-	-	-
<b>Not Reported</b>	387,220	140	180	230	240	200	230	160	200
<b>Number of Days Away from Work</b>									
<b>Cases Involving 1 Day</b>	123,950	60	150	70	280	70	140	80	90
<b>Cases Involving 2 Days</b>	97,350	120	20	30	50	30	80	90	30
<b>Cases Involving 3 - 5 Days</b>	158,540	110	150	100	40	90	40	60	60
<b>Cases Involving 6 - 10 Days</b>	107,620	150	110	50	100	50	130	20	110
<b>Cases Involving 11 - 20 Days</b>	95,440	170	80	50	70	150	30	80	60
<b>Cases Involving 21 - 30 Days</b>	54,370	110	30	80	50	50	50	40	40
<b>Cases Involving 31 or More Days</b>	263,100	290	210	180	210	140	280	530	100
<b>Median Days Away from Work</b>	8	13	7	15	9	13	10	42	10
<b>Industry Sector:</b>									
<b>Goods Producing Industries (2)</b>	217,570	600	310	230	610	330	490	420	200
<b>Natural Resources and Mining (2) (3)</b>	21,500	30	-	30	30	-	70	50	20

<b>Agriculture, Forestry, Fishing, and Hunting</b>	17,390	-	-	-	-	-	-	30	-
<b>Mining (3)</b>	4,110	30	-	20	20	-	70	20	20
<b>Construction</b>	77,490	430	210	160	460	190	270	230	140
<b>Manufacturing</b>	118,580	140	90	40	120	130	160	140	40
<b>Service Providing Industries</b>	682,810	420	430	340	170	250	260	480	290
<b>Trade, Transportation, and Utilities (4)</b>	290,300	170	180	180	100	80	170	100	150
<b>Wholesale Trade</b>	56,180	60	80	-	-	40	60	-	80
<b>Retail Trade</b>	126,850	-	20	40	-	20	40	20	-
<b>Transportations and Warehousing (4)</b>	103,620	40	20	30	-	-	20	-	20
<b>Utilities</b>	3,640	50	50	90	70	20	50	60	40
<b>Information</b>	15,580	-	-	-	-	50	-	-	-
<b>Financial Activities</b>	23,030	100	30	20	-	60	-	300	-
<b>Finance and Insurance</b>	7,040	-	-	-	-	-	-	-	-
<b>Real Estate and Rental and Leasing</b>	15,990	100	-	-	-	60	-	300	-
<b>Professional and Business Services</b>	67,490	-	50	60	30	20	-	-	30
<b>Professional Scientific and Tehnical Services</b>	16,300	-	30	-	-	-	-	-	-
<b>Management of Companies and Enterprises</b>	4,690	-	-	-	-	20	-	-	-
<b>Administrative and Support and Waste Management and Remediation Services</b>	46,500	-	20	20	30	-	-	-	30
<b>Education and Health Services</b>	167,160	100	60	20	-	20	20	30	80
<b>Educational Services</b>	11,590	-	-	-	-	-	-	-	-
<b>Health Care and Social Assistance</b>	155,570	100	40	20	-	20	20	30	80
<b>Leisure and Hospitality</b>	93,740	20	70	60	20	20	40	30	-
<b>Arts, Entertainment and Recreation</b>	15,970	-	20	-	-	-	-	-	-
<b>Accommodation and Food Services</b>	77,770	20	50	40	-	20	40	30	-
<b>Other Services</b>	25,510	30	40	-	-	-	-	-	-
<b>Other Services Except Public Administration</b>	25,510	30	40	-	-	-	-	-	-
<b>Public Administration</b>	-	-	-	-	-	-	-	-	-
<b>Musculoskeletal Disorders (7):</b>									
<b>Musculoskeletal Disorders</b>	272,780	-	-	-	-	-	-	-	-
<b>Event or Exposure (8):</b>									
<b>Violence and Other Injuries by Persons or Animal</b>	44,000	-	-	-	-	-	-	-	-
<b>Intentional Injury by Other Person</b>	20,790	-	-	-	-	-	-	-	-







<b>Sunday</b>	29,200	30	20	20	20	-	-	20	-
<b>Monday</b>	160,490	170	100	110	80	150	80	140	110
<b>Tuesday</b>	154,560	210	140	60	130	100	230	150	20
<b>Wednesday</b>	158,410	250	130	100	90	60	50	70	130
<b>Thursday</b>	153,170	190	220	90	70	140	130	380	60
<b>Friday</b>	140,670	110	120	160	370	110	120	110	130
<b>Saturday</b>	73,880	60	20	20	20	20	130	30	20

<b>Time of Day:</b>									
<b>12:01 AM - 4:00 AM</b>	28,150	-	30	-	20	-	-	20	-
<b>4:01 AM - 8:00 AM</b>	85,830	80	110	50	90	70	90	100	30
<b>8:01 AM - 12:00 PM</b>	247,040	410	260	180	210	180	200	260	250
<b>12:01 PM - 4:00 PM</b>	202,560	270	140	130	360	110	260	120	130
<b>4:01 PM - 8:00 PM</b>	105,040	80	60	40	30	50	110	30	30
<b>8:01 PM - 12:00 AM</b>	54,260	20	50	-	40	20	-	20	20
<b>Not Reported</b>	177,490	140	100	150	40	140	70	340	20

<b>Hours Worked:</b>									
<b>Occurred Before Shift Began</b>	6,710	-	-	-	-	-	-	-	-
<b>Less than 1 Hour</b>	73,070	160	130	30	20	40	20	70	70
<b>1 - 2 Hours</b>	83,540	80	40	50	70	80	40	90	20
<b>2 - 4 Hours</b>	181,480	180	190	110	140	110	110	110	90
<b>4 - 6 Hours</b>	142,930	140	110	80	370	90	140	120	100
<b>6 - 8 Hours</b>	123,570	160	110	40	70	40	130	70	40
<b>8 - 10 Hours</b>	62,030	110	-	60	20	30	150	50	100
<b>10 - 12 Hours</b>	18,900	20	20	-	-	-	20	20	20
<b>12 - 16 Hours</b>	9,790	-	-	-	-	20	50	-	-
<b>More Than 16 Hours</b>	1,600	-	-	-	-	-	-	-	-
<b>Not Reported</b>	196,770	170	130	180	80	150	90	370	40

Footnotes

(1) Days away from work include those that result in days away from work with or without job transfer or restriction.

(2) Standard Occupational Classification Manual, 2010, Office of Management and Budget

(3) Median days away from work is the measure used to summarize the varying lengths of absences from work among the cases with days away from work. Half the cases involved more days and half involved less days than a specified median. Median days away from work are represented in actual values.

(4) Excludes farms with fewer than 11 employees.

(5) Data for mining (Sector 21 in the North American Industry Classification System -- United States, 2007) include establishments not governed by the Mine Safety and Health Administration (MSHA) rules and reporting, such as those in oil and gas extraction and related support activities. Data for mining operators in coal, metal, and nonmetal mining are provided to BLS by the Mine Safety and Health Administration, U.S. Department of Labor. Independent mining contractors are excluded from the coal, metal, and nonmetal mining industries. These data do not reflect the changes Occupational Safety and Health Administration made to its recordkeeping requirements effective January 1, 2002; therefore estimates for these industries are not comparable with estimates for other industries.

(6) Data for employers in railroad transportation are provided to BLS by the Federal Railroad Administration, U.S. Department of Transportation. These data do not reflect the changes Occupational Safety and Health Administration made to its recordkeeping requirements effective January 1, 2002; therefore estimates for these industries are not comparable with estimates for other industries.

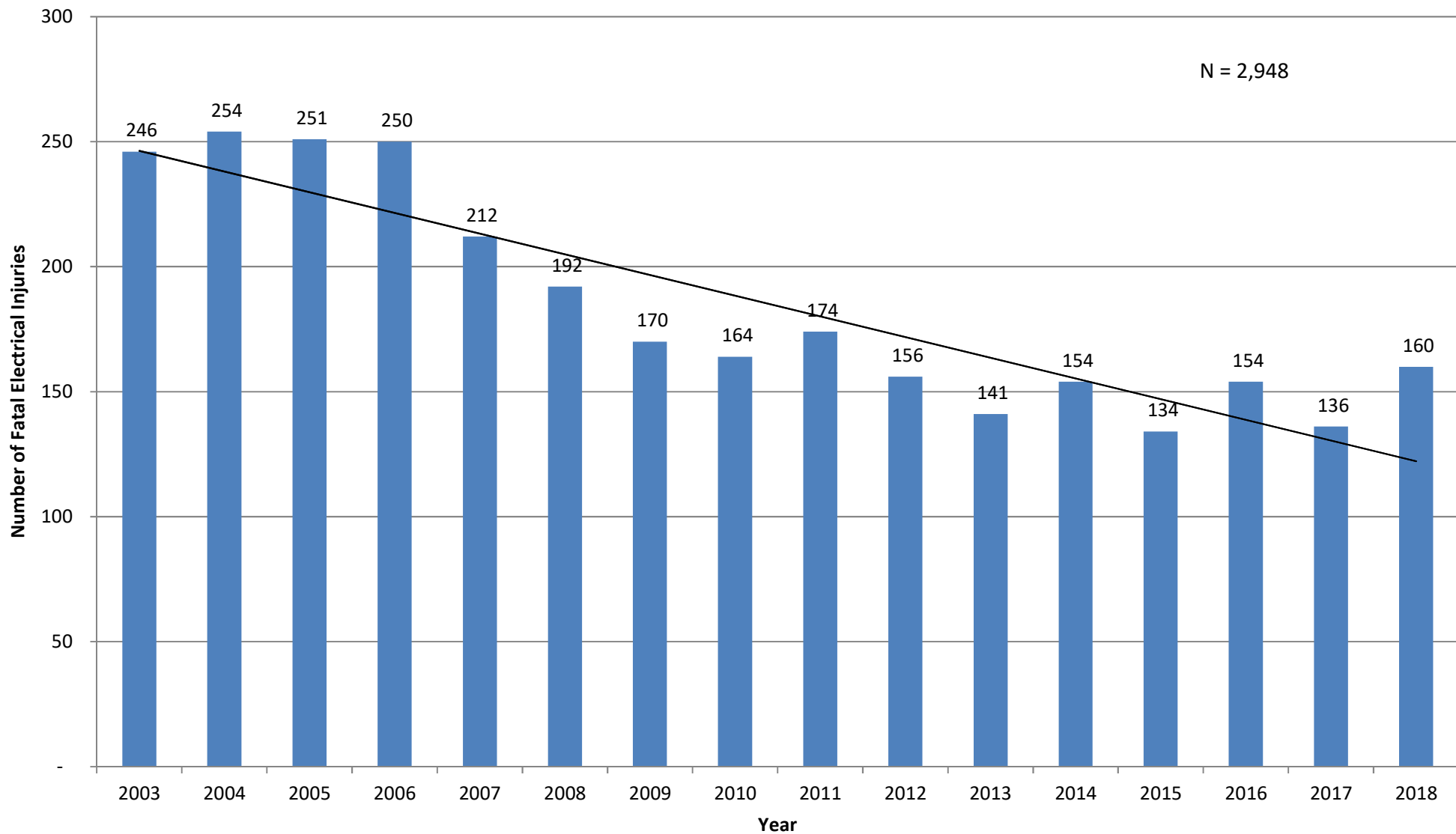
(7) Musculoskeletal disorders (MSDs) include cases where the nature of the injury or illness is pinched nerve; herniated disc; meniscus tear; sprains, strains, tears; hernia (traumatic and nontraumatic); pain, swelling, and numbness; carpal or tarsal tunnel syndrome; Raynaud's syndrome or phenomenon; musculoskeletal system and connective tissue diseases and disorders, when the event or exposure leading to the injury or illness is overexertion and bodily reaction, unspecified; overexertion involving outside sources; repetitive motion involving microtasks; other and multiple exertions or bodily reactions; and rubbed, abraded, or jarred by vibration.

(8) Occupational Injury and Illness Classification System 2.01

NOTE: Because of rounding and data exclusion of nonclassifiable responses, data may not sum to the totals. Dashes indicate data that do not meet publication guidelines. The scientifically selected probability sample used was one of many possible samples, each of which could have produced different estimates. A measure of sampling variability for each estimate is available upon request -- please contact [iifstaff@bls.gov](mailto:iifstaff@bls.gov) or call (202) 691-6170. For additional information about methodology and coding structures, see the BLS Handbook of Methods chapter 9: <https://www.bls.gov/pub/hom/homch9.htm> .

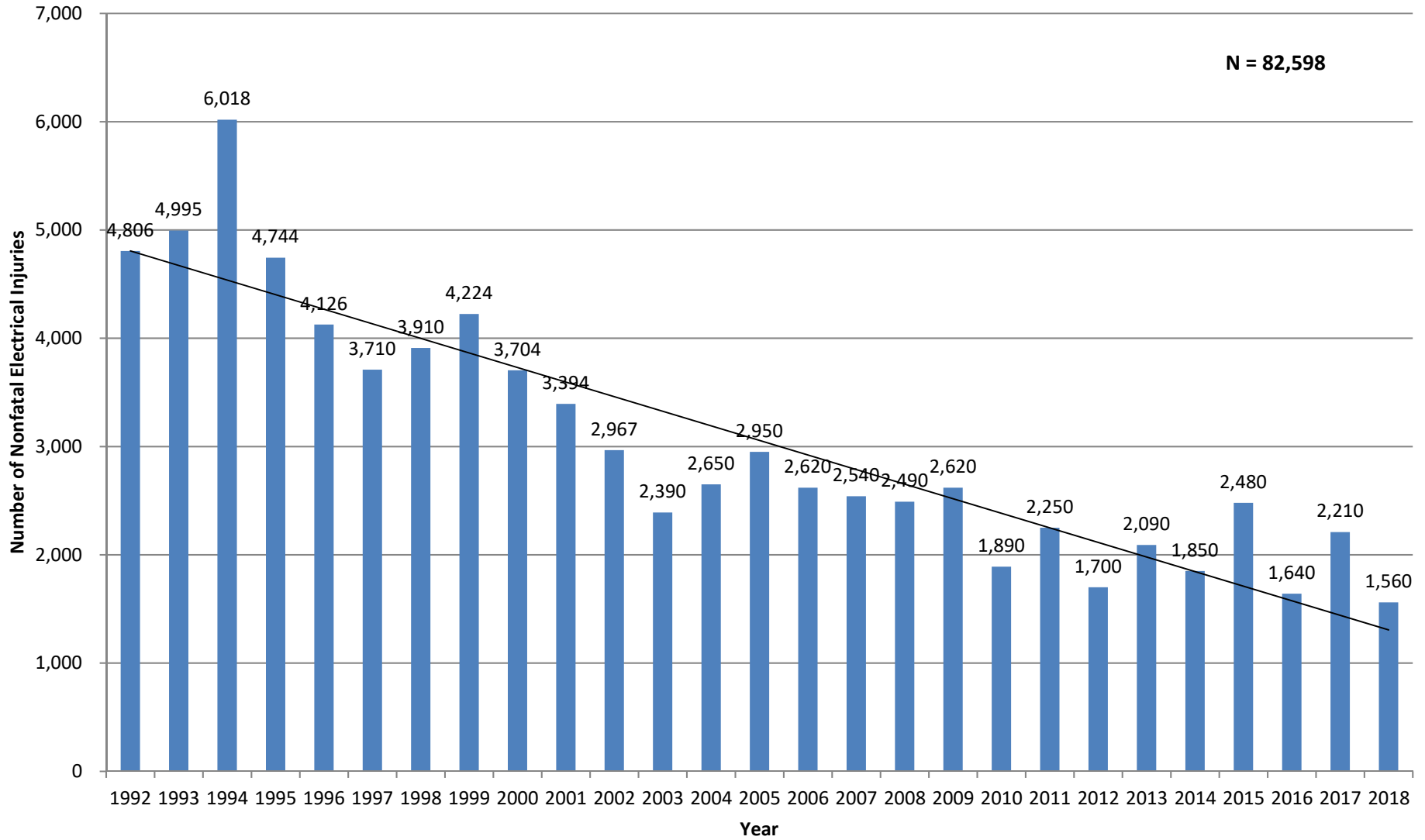
SOURCE: Bureau of Labor Statistics, U.S. Department of Labor, Dec 5, 2019

## Number of Fatal Electrical Injuries, by Event Code, All Ownerships, 2003 - 2018



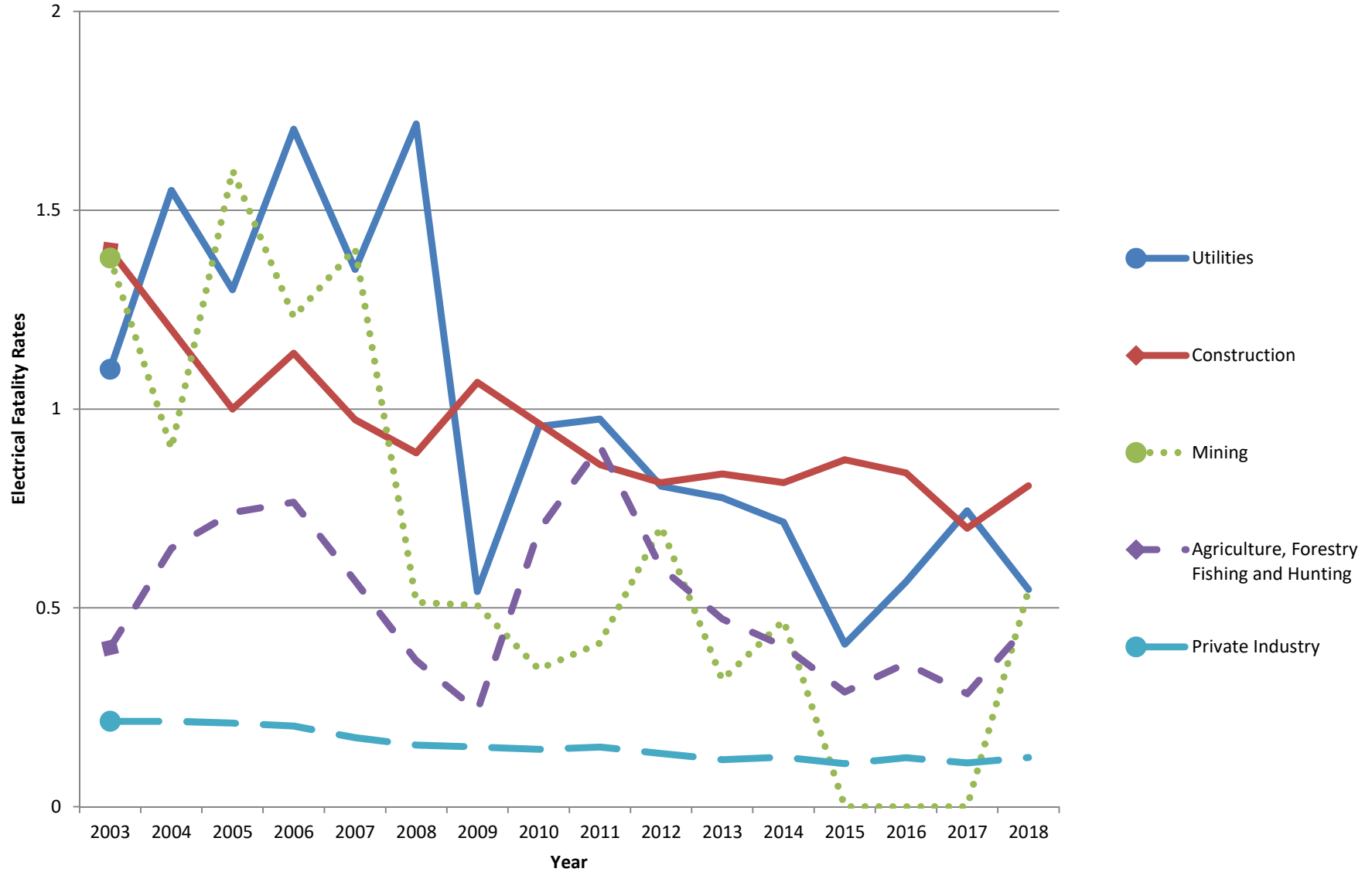
Compiled by the Electrical Safety Foundation International  
using data from the U.S. Bureau of Labor Statistics, CFOI, 2003 -2018

## Number of Nonfatal Electrical Injury, by Event, Private Industry, 1992 - 2018

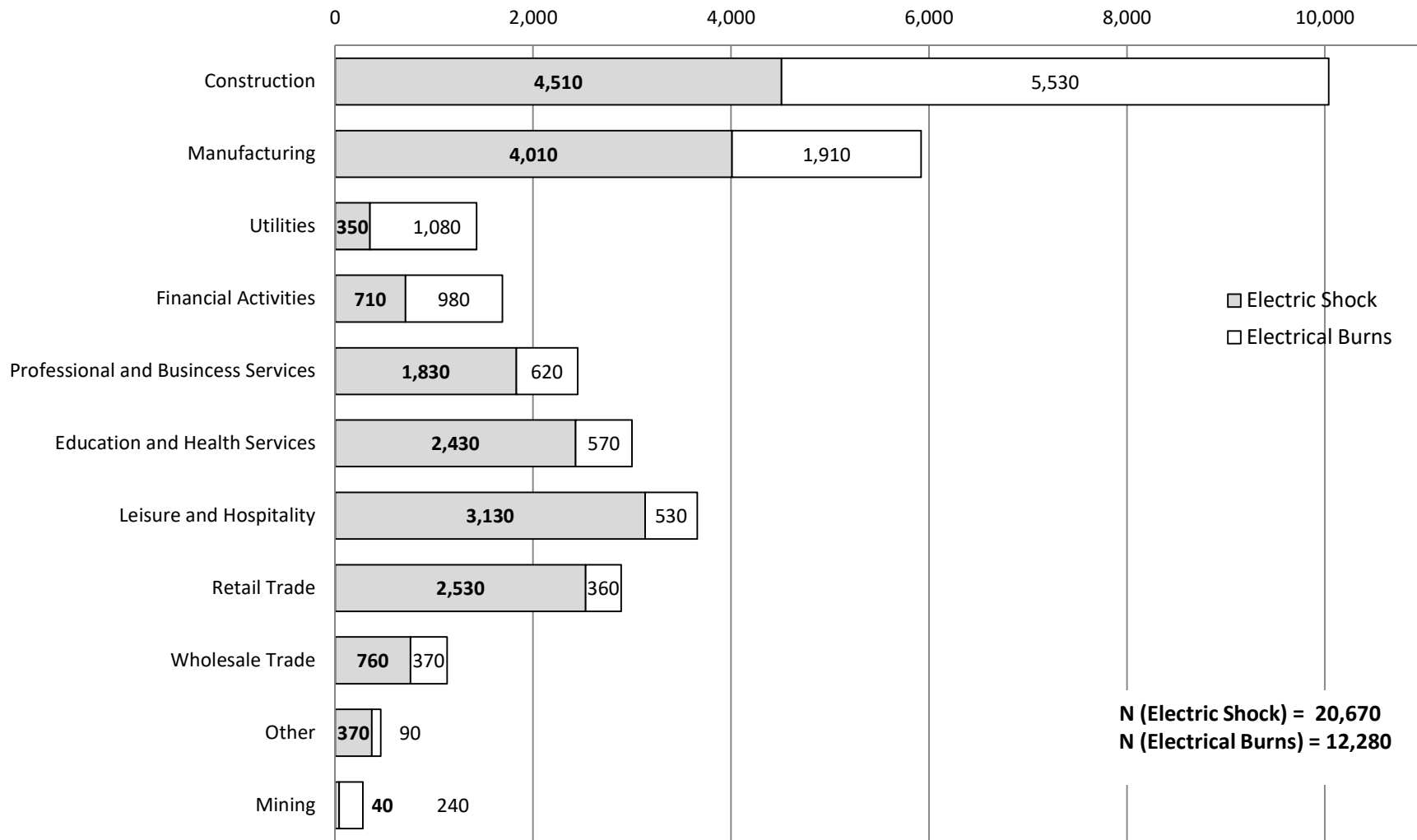


Compiled by the Electrical Safety Foundation International  
using data from BLS CFOI, 1992 - 2018

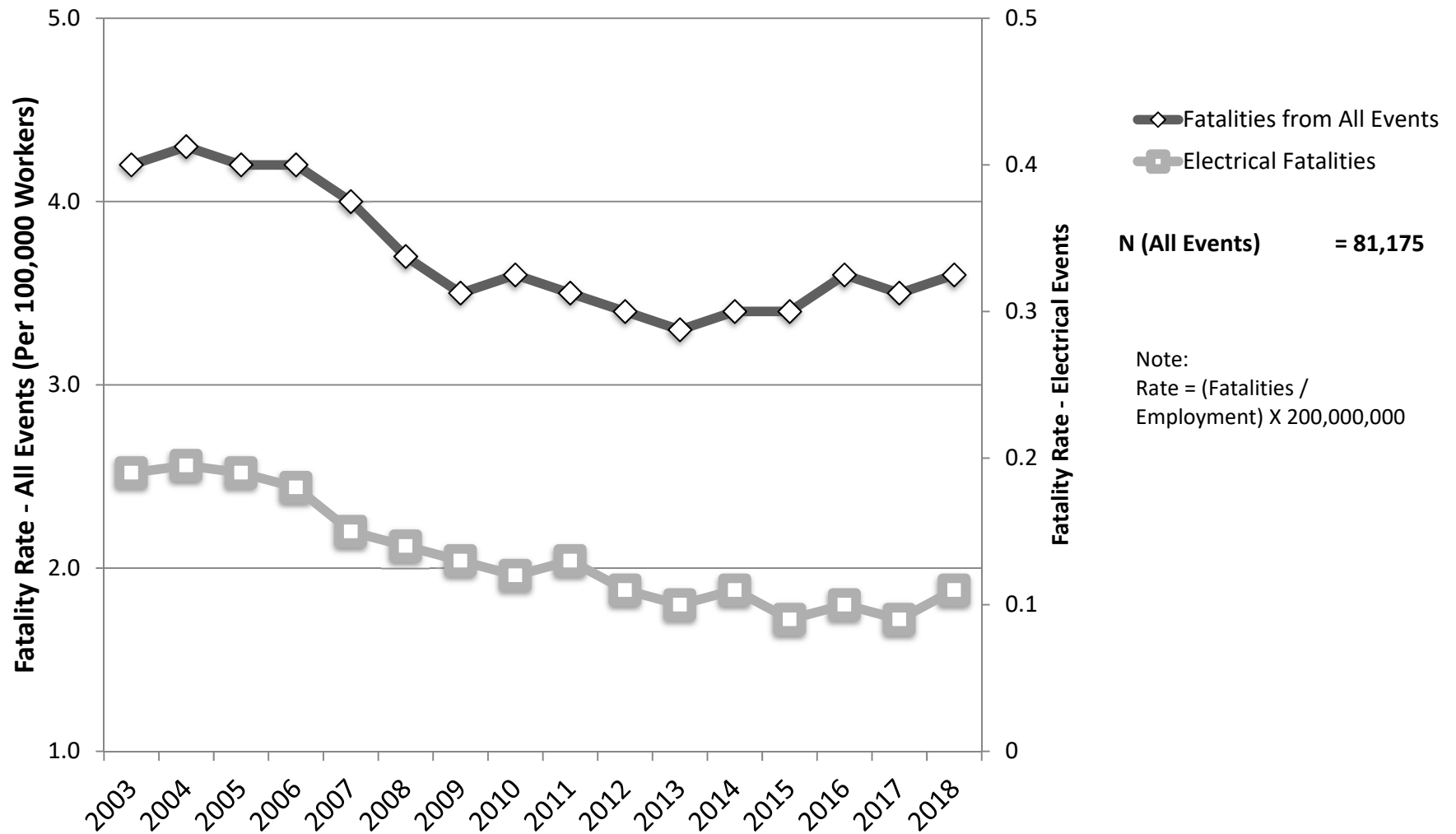
## Electrical Fatality Rates for Selected Industries, Private Industry, 2003 - 2018



## Number of Nonfatal Electrical Injuries, Private Industry by Nature of Injury (Electrical Shocks / Electrical Burns), 2003 - 2018



## Fatality Rates for All Events vs. Electrical Events, All Ownerships, 2003 - 2018

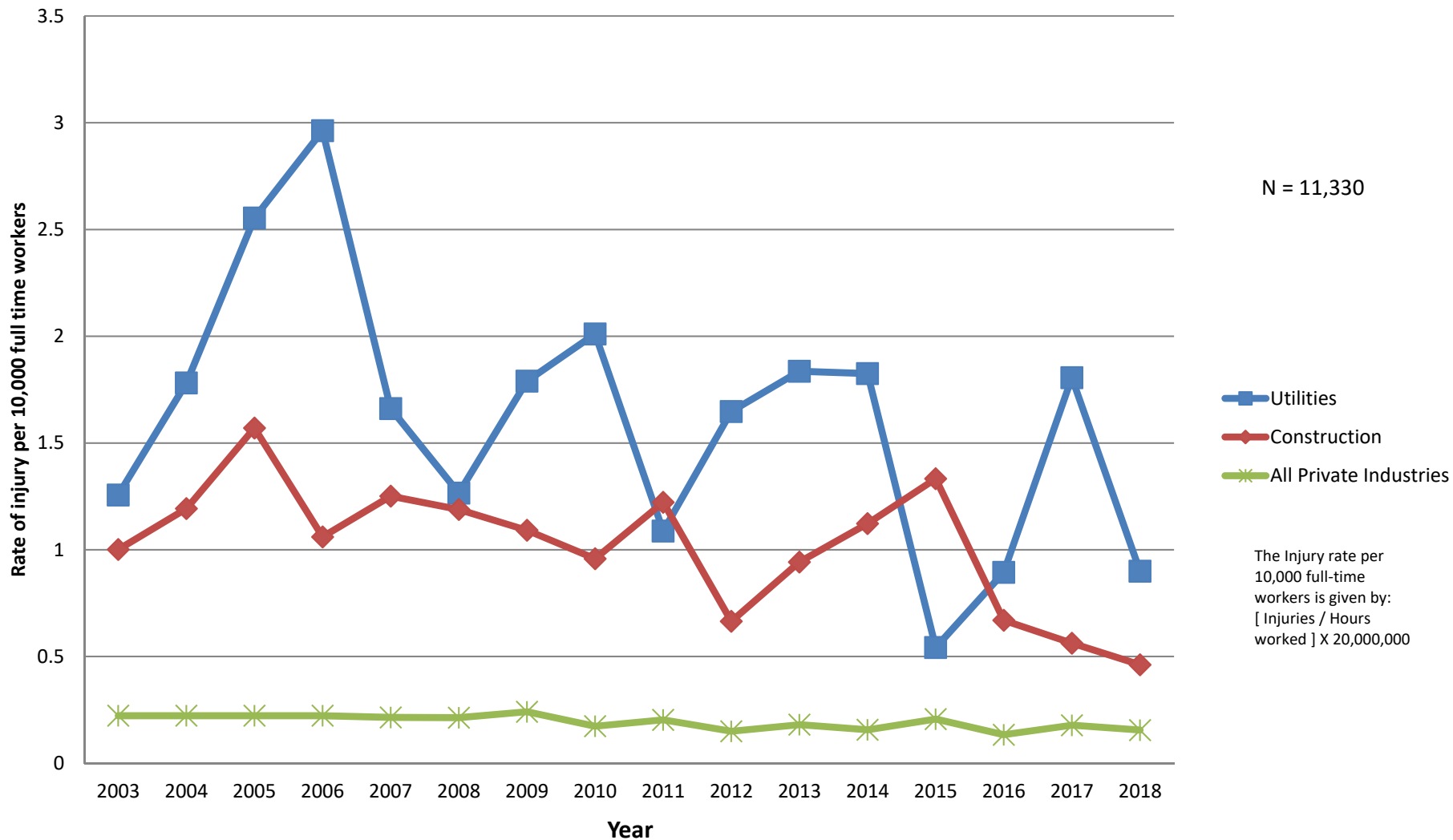


**N (All Events) = 81,175**

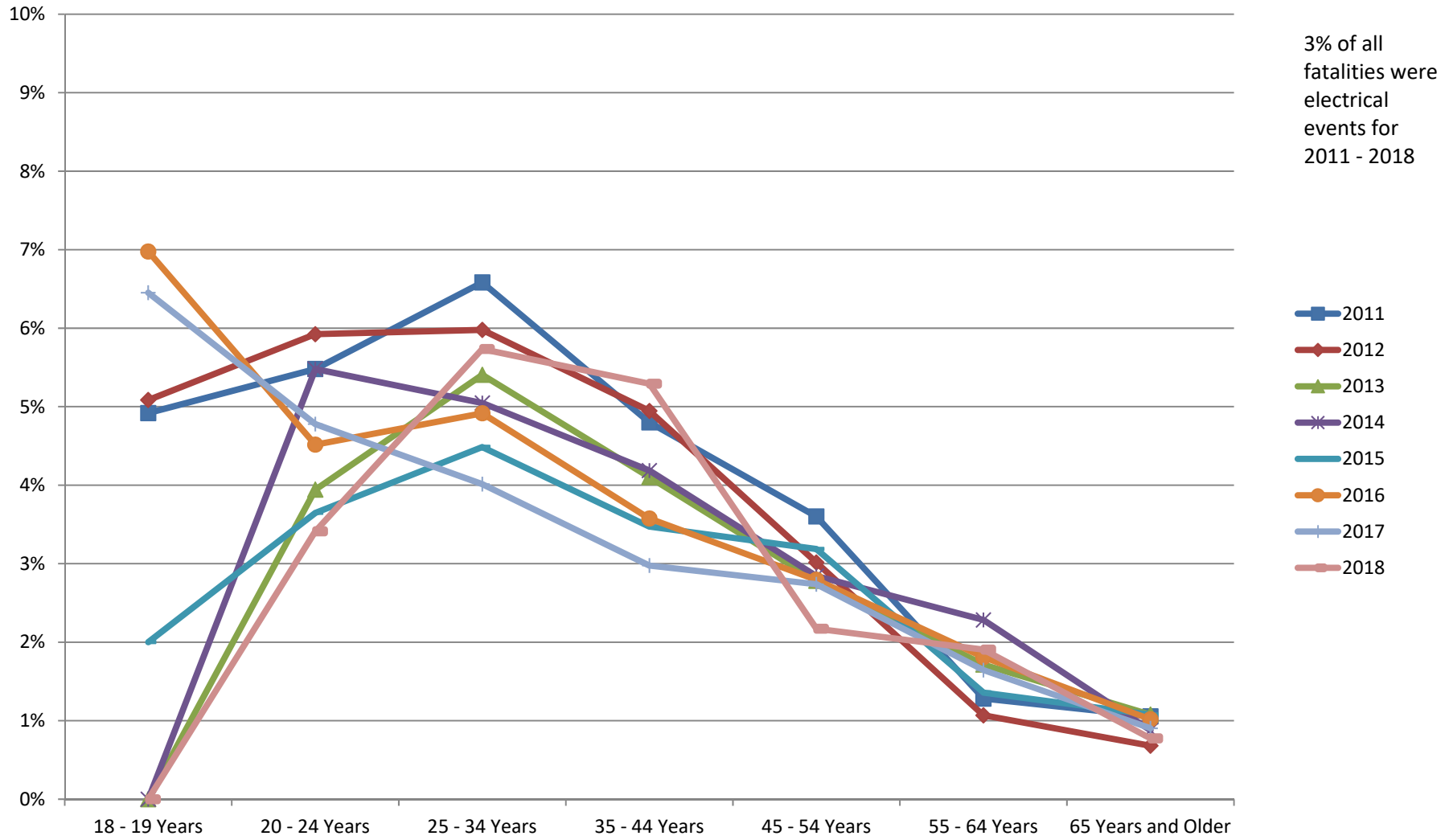
Note:  
Rate = (Fatalities /  
Employment) X 200,000,000



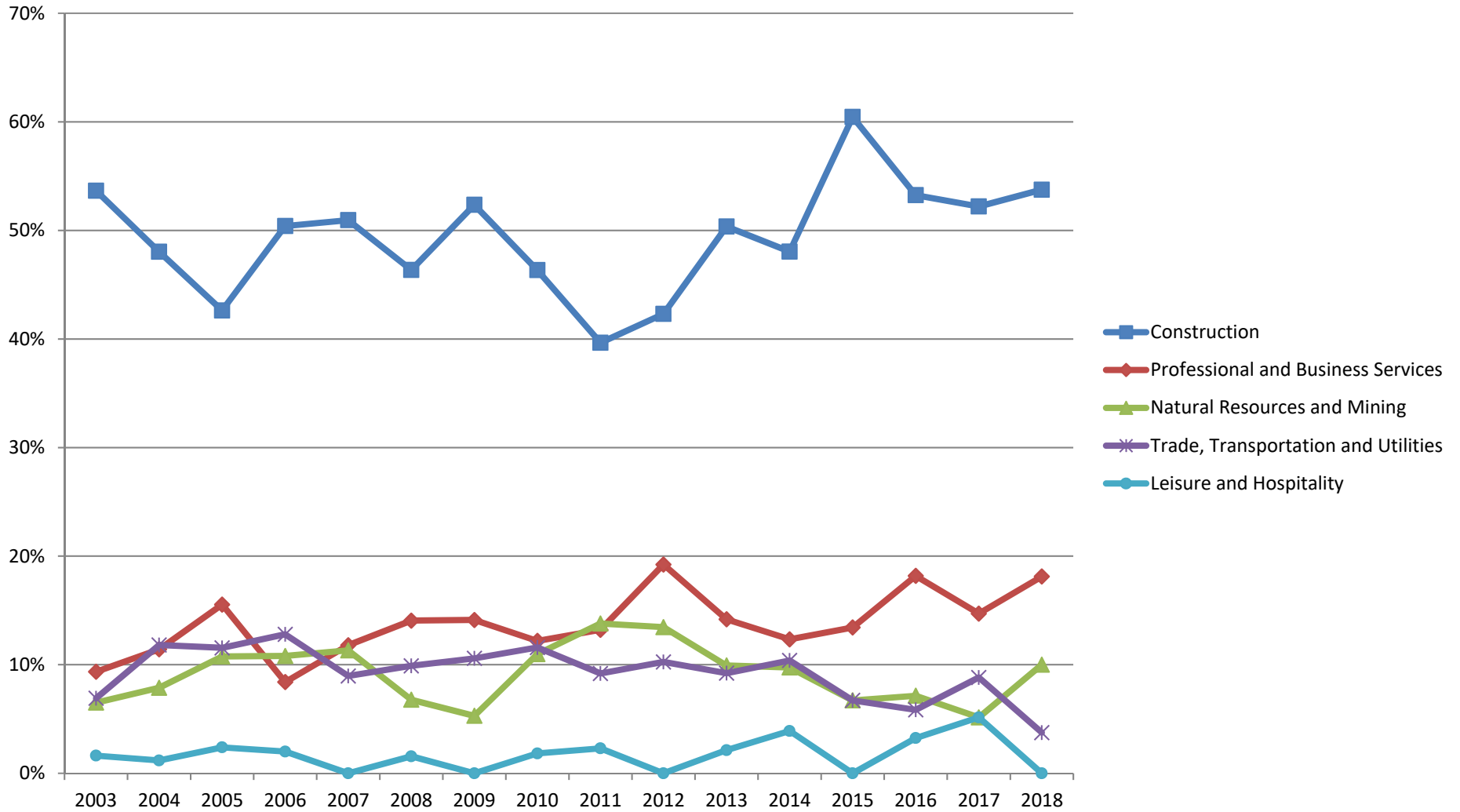
## Rates of Nonfatal Electrical Injury Involving Days Away from Work for Selected Industries, by Event, Private Industry, 2003 - 2018



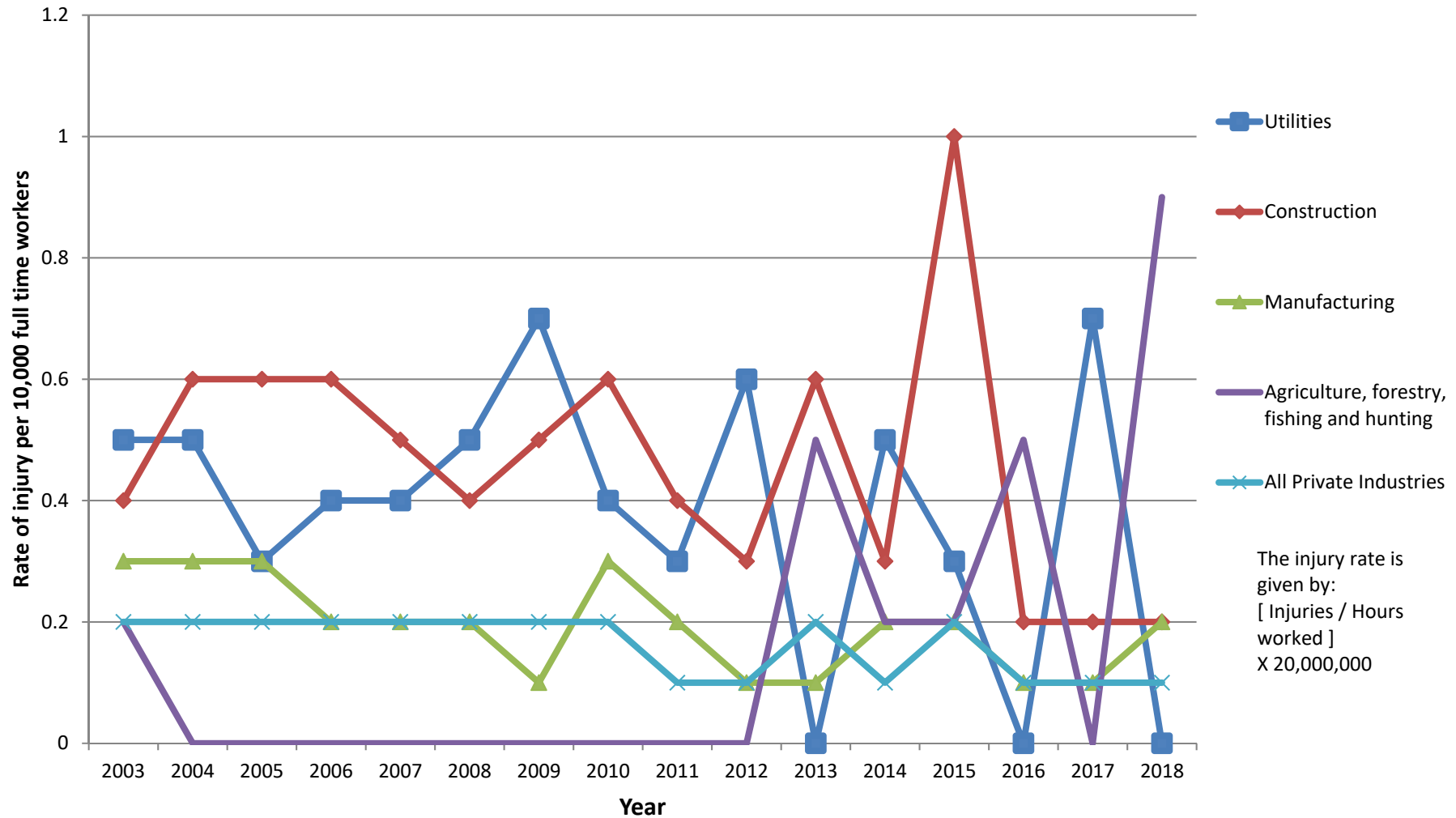
## Electrical Fatalities by Age Group as a Percentage of Fatalities from All Events, All ownerships, 2011 - 2018



## Number of Electrical Fatalities by Selected Industry Group as a Percentage of Total Electrical Fatalities 2003 - 2018

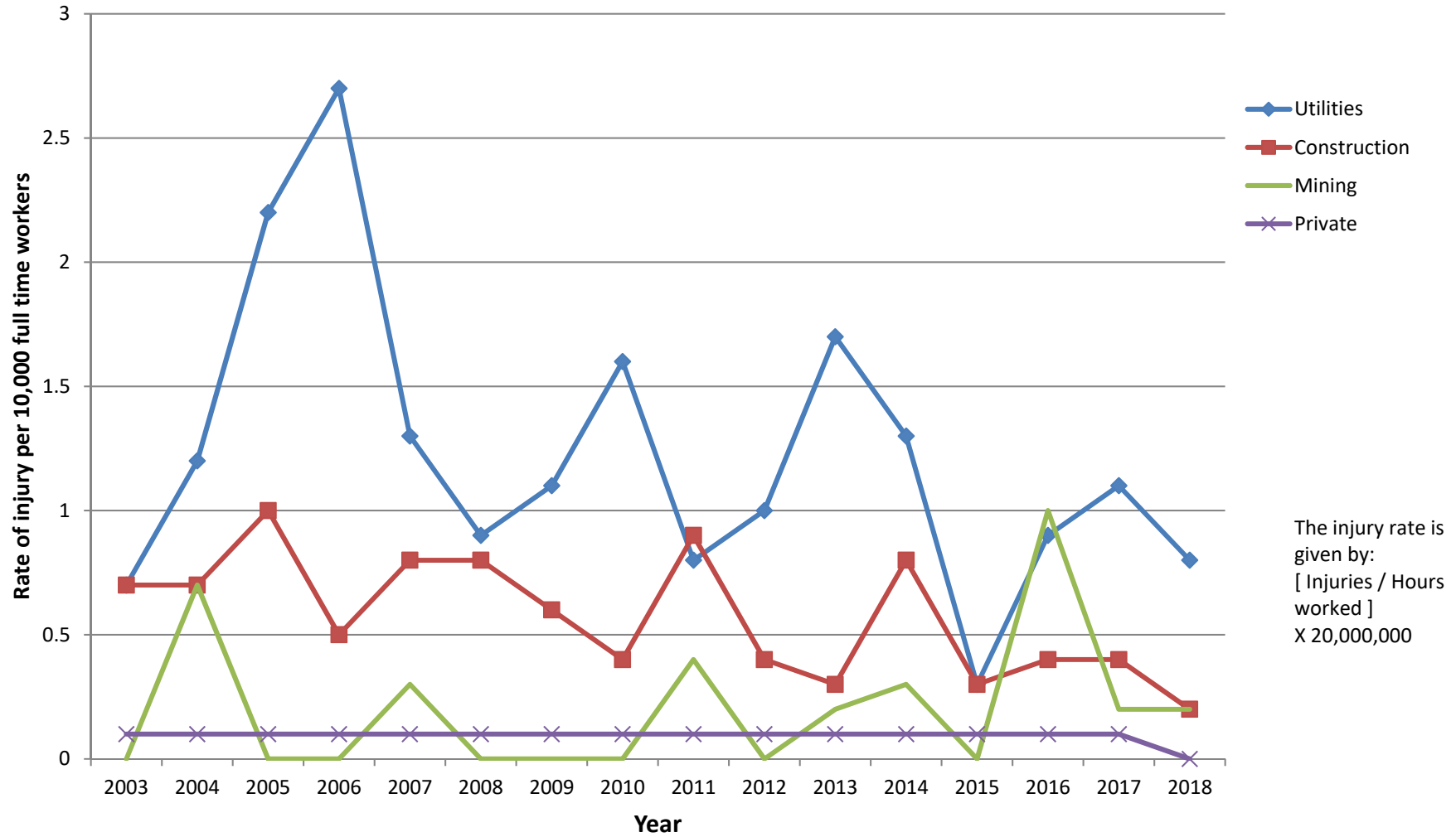


## Rate of Nonfatal Electrical Shock Injury Involving Days Away from Work for Selected Industries, Private Industry, 2003 - 2018



Compiled by the Electrical Safety Foundation International using data from  
 the U.S. Department of Labor, Bureau of Labor Statistics, SOII, 2003-2018

## Rate of Nonfatal Electrical Burn Injury Involving Days Away from Work for Selected Industries, Private Industry, 2003 - 2018



Compiled by the Electrical Safety Foundation International using data from the U.S. Department of Labor, Bureau of Labor Statistics, SOII, 2003-2018