

⚡ Solar PV Electrical Safety



According to the U.S. Bureau of Labor Statistics, **solar photovoltaic installer jobs** are expected to **grow 51%** between 2019 and 2029, increasing at a much higher rate than the average of all occupations. **Learn how to stay safe** while working with or around solar panels.

Statistics*

51%

expected growth in solar PV installer jobs by 2029 making it the 3rd fastest growing occupation.

650

Between 2011 and 2019, 650 solar PV installers were **injured on the job**.

1-5 YEARS

51% of **injured** solar PV installers were employed for 1-5 years.

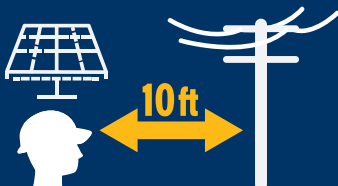
PV Installation Electrical Safety



Locate all overhead power lines.



Consider all overhead lines to be **live, energized** and **dangerous**.



Keep self and equipment **10 feet away** from all overhead lines.



Carry ladders and other equipment **horizontally** when on the ground to avoid overhead lines.

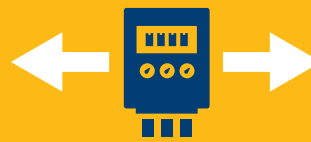
PV Panel Electrical Safety



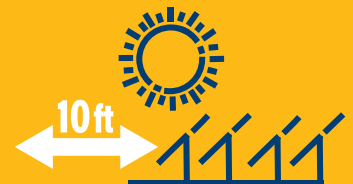
Solar disconnects only disconnect building from PV panels. **Panels can still generate power.**



Never walk or climb on a solar PV panel.



Beware of **bi-directional power**, mark all bi-directional meters.



Stay at least **10 feet away** from solar installations.

In Case of Emergency Involving Solar Panels



Call 911 and notify first responders that PV are involved.



If possible, **turn off AC side of solar panels**. Solar panels may still generate DC power.



Remind first responders of the PV system.

Please **share** this **free** resource to save lives.