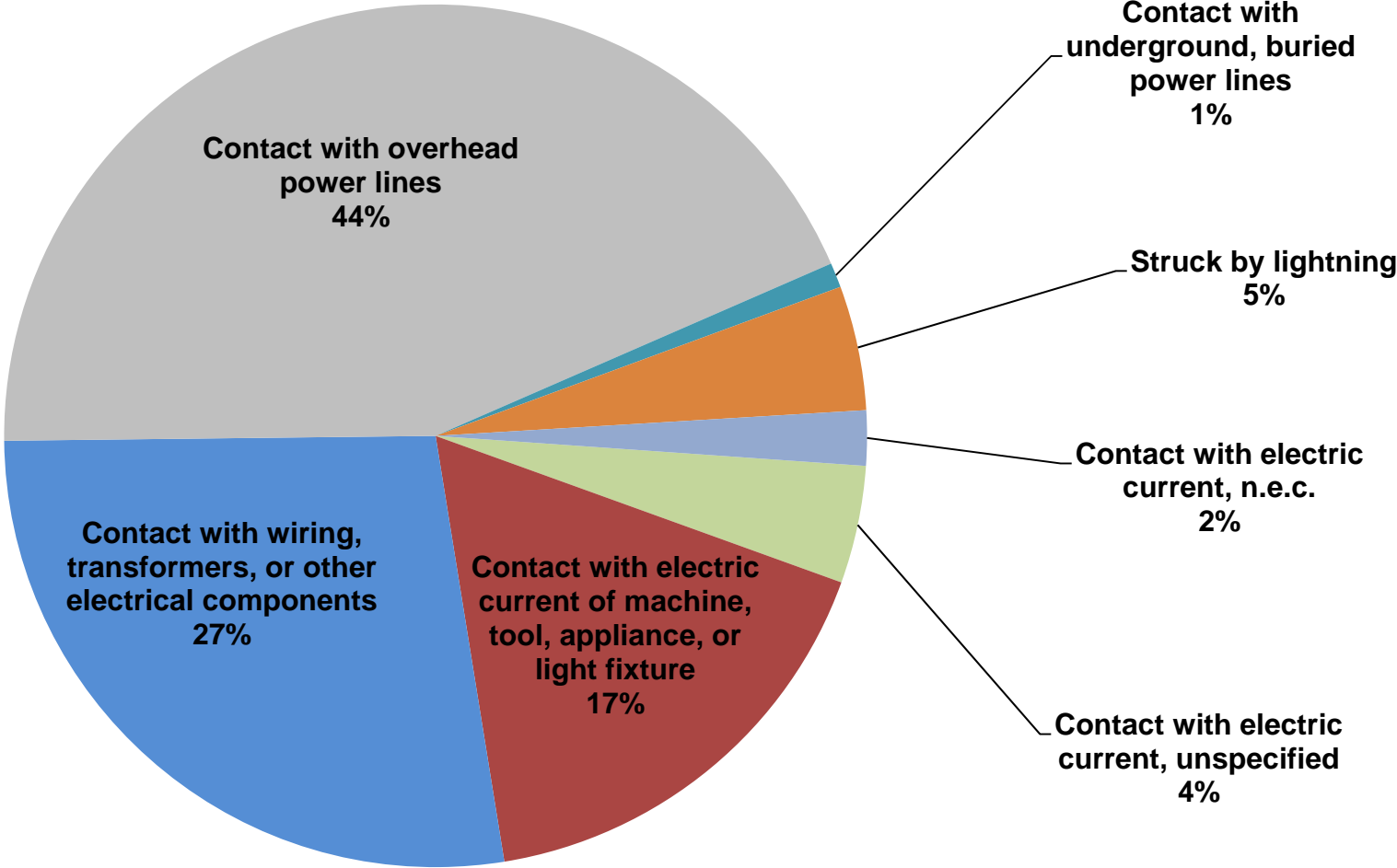
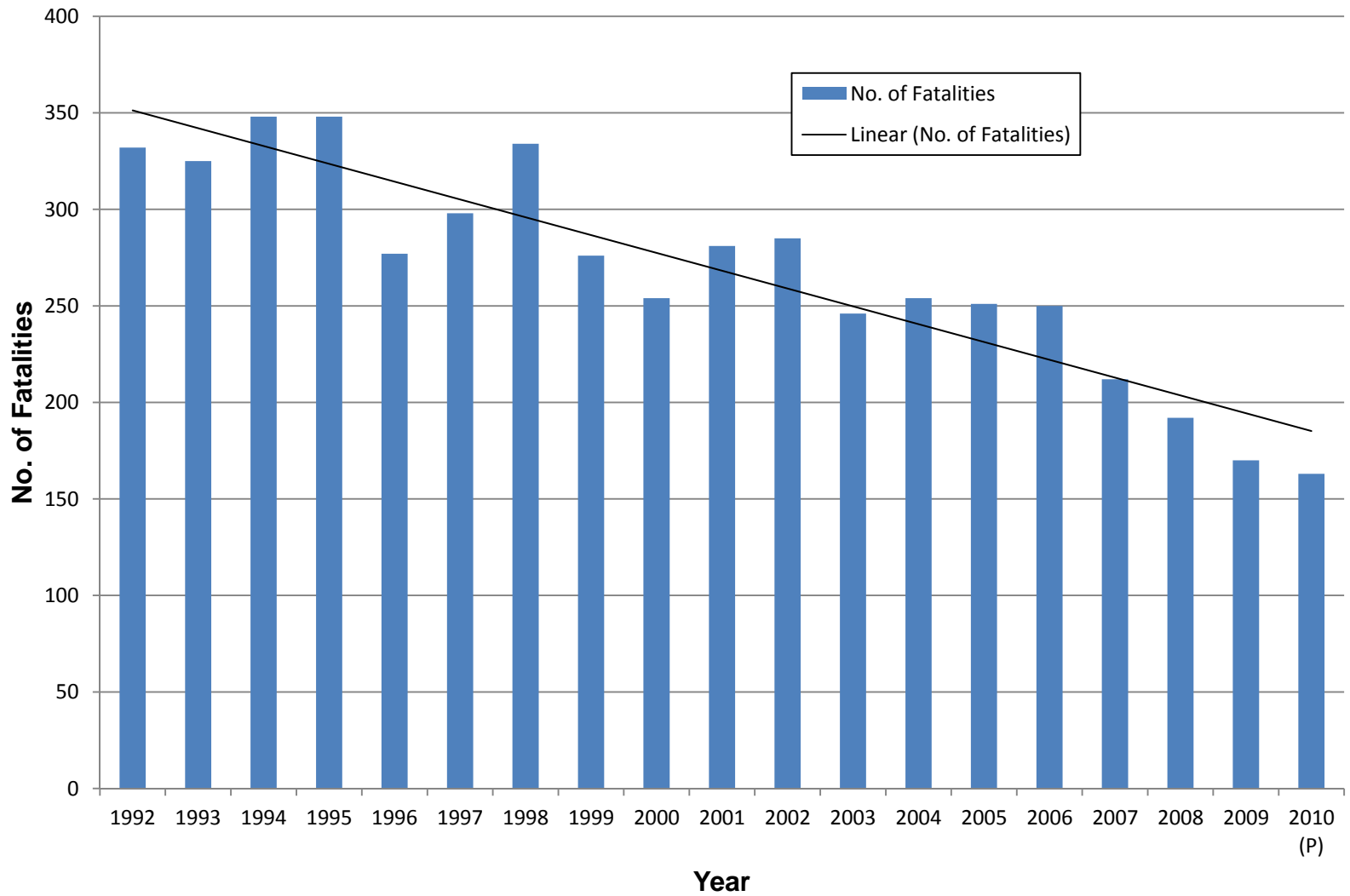


Percent of Electrical Fatalities, by Event, 1992-2010



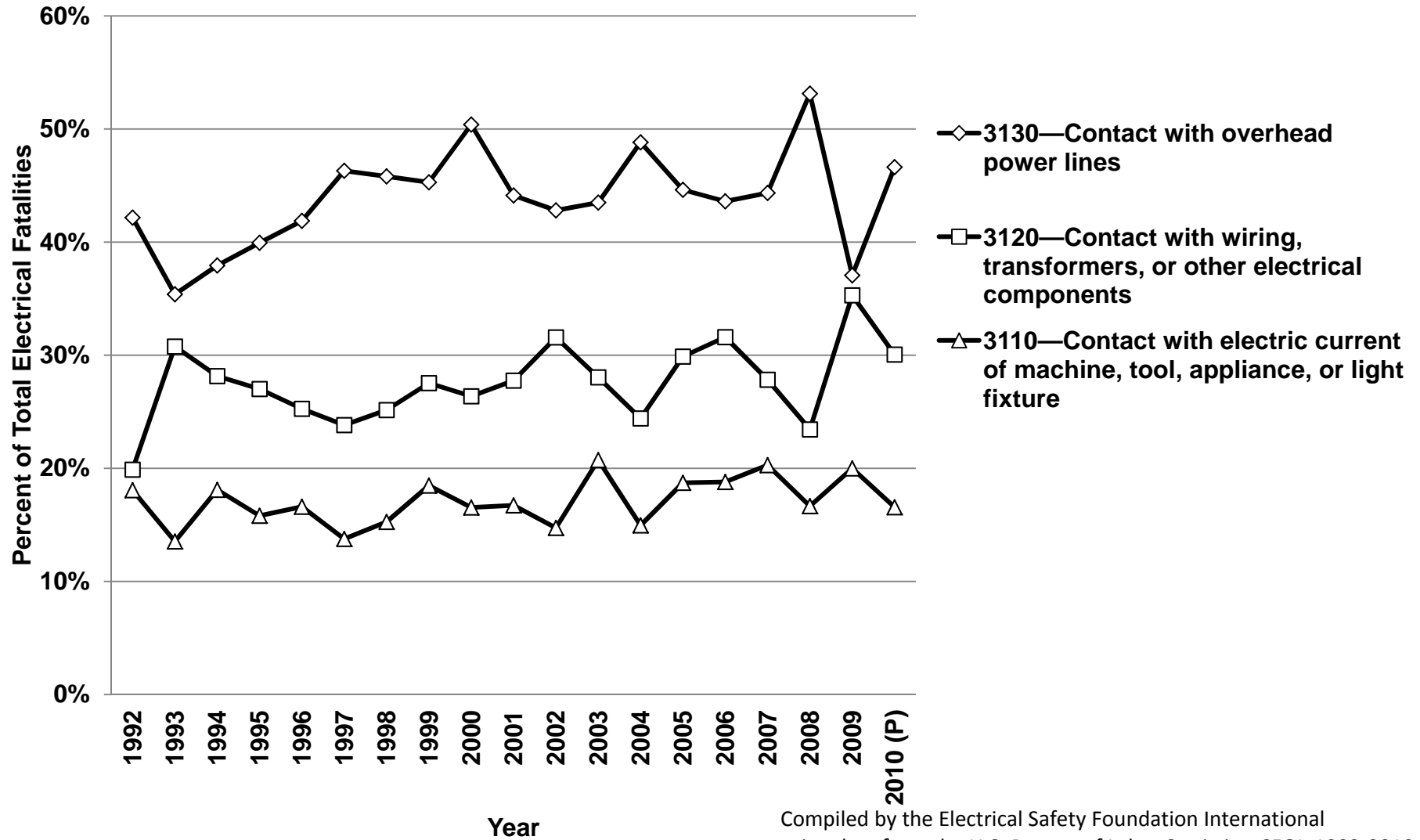
Compiled by the Electrical Safety Foundation International using data from the U.S. Bureau of Labor Statistics, CFOI, 1992-2010

Total Number of Electrical Fatalities per Year, 1992-2010



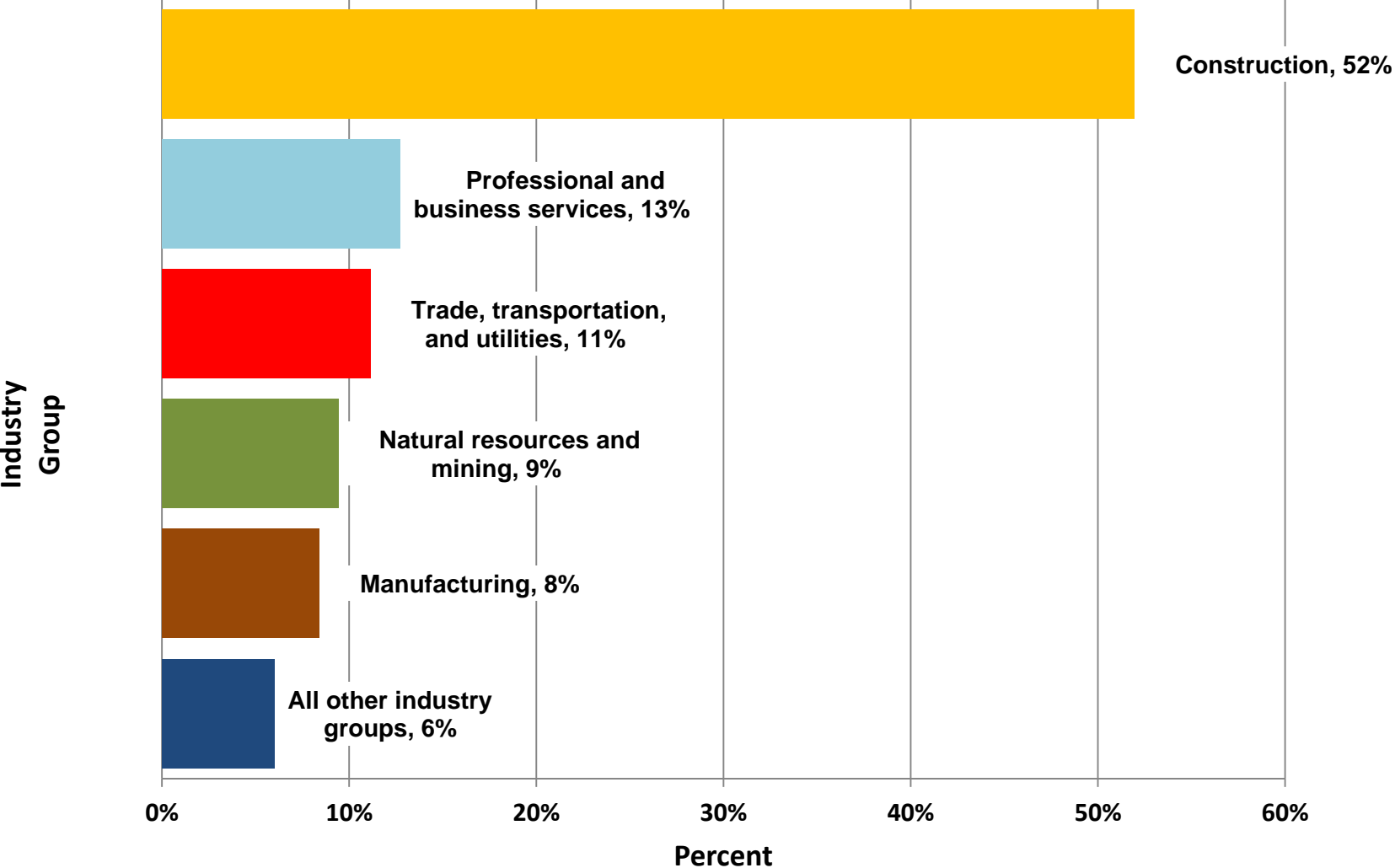
Compiled by the Electrical Safety Foundation International
using data from the U.S. Bureau of Labor Statistics, CFI, 1992-2010

Three Largest Fatality Categories as a Pct. of Total Electrical Fatalities, by Event, 1992-2010



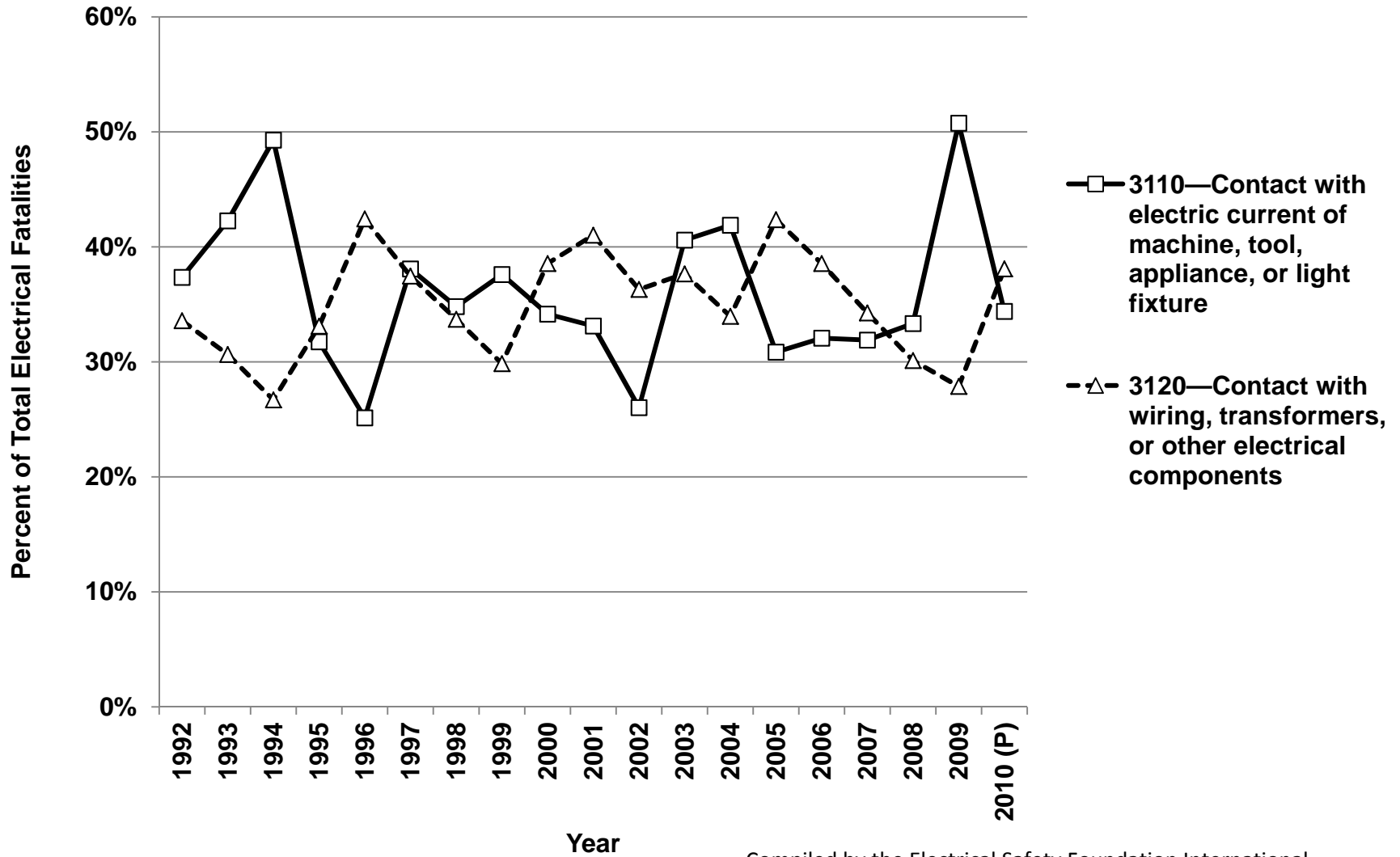
Compiled by the Electrical Safety Foundation International
using data from the U.S. Bureau of Labor Statistics, CFOI, 1992-2010

Electrical Fatalities by Industry Group as a Pct. of Total Electrical Fatalities, 2003-2010



Compiled by the Electrical Safety Foundation International using data from the U.S. Bureau of Labor Statistics, CFOI, 1992-2010

Nonfatal Electrical Injuries, by Event, for Selected Categories as a Pct. of Total Nonfatal Electrical Injuries, 1992-2010



Compiled by the Electrical Safety Foundation International
using data from the U.S. Bureau of Labor Statistics, SOII, 1992-2010