

Table 1

Fatalities by EVENT, all ownerships, 2003-2015															
Rank	Event or Exposure	2003	2004	2005	2006	2007	2008	2009	2010	2011	2012	2013	2014	2015	Fatalities
1	Transportation, excluding water, rail, air	2,041	2,118	2,173	2,081	2,057	1,829	1,516	1,600	1,670	1,695	1,628	1,737	1,821	23,966
2	Assaults and Violent acts	902	809	792	788	864	816	837	832	791	803	773	765	703	10,475
3	Falls	696	822	770	827	847	700	645	646	681	704	724	818	800	9,680
4	Struck by object or equipment	531	602	607	589	504	520	420	404	476	519	509	503	519	6,703
5	Exposure to harmful substances or environments, excluding electrical	240	210	250	297	285	247	234	250	245	184	194	236	290	3,162
6	Caught in or compressed by equipment or objects	238	269	278	283	296	302	233	228	145	124	131	132	99	2,758
7	Contact with / Exposure to electric current	246	254	251	250	212	192	170	164	174	156	141	154	134	2,498
8	Aircraft	211	231	149	217	174	191	159	152	145	127	136	135	139	2,166
9	Caught in or crushed in collapsing materials	126	117	109	108	108	100	80	91	84	73	78	74	90	1,238
10	Explosions	75	75	65	99	75	80	60	80	82	88	67	84	75	1,005
11	Water Vehicle	69	91	88	96	71	76	86	60	72	63	60	55	44	931
12	Railway	43	50	83	65	49	34	34	45	50	38	41	57	50	639
	Other	157	116	119	140	115	127	77	138	78	54	103	71	72	1,367
	Total Fatalities (all causes)	5,575	5,764	5,734	5,840	5,657	5,214	4,551	4,690	4,693	4,628	4,585	4,821	4,836	66,588

Compiled by the Electrical Safety Foundation International using data from the U.S. Bureau of Labor Statistics, CFOI, 2003-2015

Table 2

Electrical fatalities by Event and Nature of Injury, all ownerships, 2011-2015											
Event	Event Code	Electrocutions, electric shocks					Electrical burns				
		2011	2012	2013	2014	2015	2011	2012	2013	2014	2015
Exposure to electricity	51	171	152	135	146	130	3	-	6	7	-
Direct exposure to electricity	511	94	75	83	81	81	1	-	2	5	-
Direct exposure to electricity, 220 volts or less	5111	26	18	26	24	27	-	-	-	-	-
Direct exposure to electricity, greater than 220 volts	5112	55	52	48	54	52	1	-	2	5	-
Indirect exposure to electricity	512	73	73	49	65	47	-	-	3	-	-
Indirect exposure to electricity, 220 volts or less	5121	11	5	5	7	7	-	-	-	-	-
Indirect exposure to electricity, greater than 220 volts	5122	60	66	41	58	40	-	-	-	-	-

Rows, columns may not sum to total.

Dashes [-] indicate no data or data that do not meet BLS publication criteria.

Compiled by the Electrical Safety Foundation International using data from the U.S. Bureau of Labor Statistics, CFI, 2011-2015

Table 3

Number of electrical fatalities in selected industries, by EVENT, Private Industry, 2003-2015														
Industry Sector	2003	2004	2005	2006	2007	2008	2009	2010	2011	2012	2013	2014	2015	Total
Construction	132	122	107	126	108	89	89	76	69	66	71	74	81	1,210
Professional and business services	23	29	39	21	25	27	24	20	23	30	20	19	18	318
Trade, transportation, and utilities	17	30	29	32	19	19	18	19	16	16	13	17	9	254
Natural resources and mining	16	20	27	27	24	13	9	18	24	21	14	16	9	238
Manufacturing	22	22	17	14	17	19	15	11	20	11	9	12	7	196
Other services	7	6	10	6	5	5	5	-	5	-	5	-	-	54
Leisure and hospitality	4	3	6	5	-	3	-	3	4	-	3	6	-	37
Information	3	6	4	3	-	-	-	4	3	1	-	-	-	24
Financial activities	5	-	-	5	3	-	-	4	1	3	-	3	-	24
Total	246	254	251	250	212	192	170	164	174	156	141	156	134	2,500

NOTES:

Dashes [-] indicate no data or data that do not meet publication criteria.
 Totals for major categories may include subcategories not shown separately.
 Data may not sum to totals due to missing data or categories not shown.

Compiled by the Electrical Safety Foundation International using data from the U.S. Department of Labor, Bureau of Labor Statistics, in cooperation with State, New York City, District of Columbia, and Federal agencies, CFOI, 2003-2015

Table 4

Nonfatal electrical injuries involving days away from work, by Event, Private Industry, 1992-2015	
Year	Total
1992	4,806
1993	4,995
1994	6,018
1995	4,744
1996	4,126
1997	3,710
1998	3,910
1999	4,224
2000	3,704
2001	3,394
2002	2,967
2003	2,390
2004	2,650
2005	2,950
2006	2,620
2007	2,540
2008	2,490
2009	2,620
2010	1,890
2011	2,040
2012	1,730
2013	2,040
2014	1,850
2015	2,480
Total	76,888

Compiled by the Electrical Safety Foundation International using data from the U.S. Bureau of Labor Statistics, CFOI, 1992-2015

Table 5

Median number of days away from work for nonfatal electrical injuries, by EVENT, Private Industry, 2011-2015						
Event	Event Code	Median Days Away				
		2011	2012	2013	2014	2015
Exposure to electricity	51	6	4	14	3	5
Direct exposure to electricity	511	9	4	27	5	5
Direct exposure to electricity, 220 volts or less	5111	6	4	3	9	5
Direct exposure to electricity, greater than 220 volts	5112	45	2	24	10	2
Indirect exposure to electricity	512	5	5	3	1	20
Indirect exposure to electricity, 220 volts or less	5121	2	9	2	1	5
Indirect exposure to electricity, greater than 220 volts	5122	5	6	63	10	49

NOTES:

Compiled by the Electrical Safety Foundation International using data from the U.S. Department of Labor, Bureau of Labor Statistics, in cooperation with State, New York City, District of Columbia, and Federal agencies, Census of Fatal Occupational Injuries, 2011-2015

Table 6

Fatal occupational injuries by selected worker characteristics and selected event or exposure, All U.S., all ownerships, 2011 - 2015						
Characteristic	All events	Exposure to electricity (code 51XXXX)				
	2015	2011	2012	2013	2014	2015
Total:	4836	174	156	141	154	134
Employee status:						
Wage and salary workers (1)	3751	141	125	114	126	107
Self-employed (2)	1085	33	31	27	28	27
Gender:						
Women	344	5	-	-	2	-
Men	4492	169	154	141	152	134
Age:						
Under 16 years	12	3	-	-	-	-
16 to 17 years	12	-	-	-	-	-
18 to 19 years	50	3	3	-	-	1
20 to 24 years	329	16	17	11	16	12
25 to 34 years	758	47	44	42	38	34
35 to 44 years	864	42	41	35	36	30
45 to 54 years	1130	44	35	31	33	36
55 to 64 years	1031	12	10	16	23	14
65 years and over	650	6	4	6	6	7
Race or ethnic origin (3) :						
White non-Hispanic	3241	117	111	95	103	93
Black or African-American non-Hispanic	495	7	7	9	10	9
Hispanic or Latino	903	47	35	35	38	31
American Indian or Alaska Native non-Hispanic	36	-	-	-	-	-
Asian non-Hispanic	114	-	-	-	-	-
Native Hawaiian or Pacific Islander non-Hispanic	9	-	-	-	-	-
Person of multiple races non-Hispanic	12	-	-	-	-	-
Other races or not reported non-Hispanic	26	-	-	-	-	-
Primary source (4) (5) :						
Chemicals and chemical products	233	-	-	-	-	-
Containers furniture and fixtures	95	7	3	-	8	7
Machinery	358	26	29	17	16	15
Agriculture and garden machinery	71	1	3	-	-	-
Construction logging and mining machinery	139	4	3	4	3	-
Material and personnel handling machinery	100	8	9	-	4	8
Parts and materials	192	84	71	79	66	72
Machine tool and electric parts	80	74	58	71	60	66
Persons plants animals and minerals	900	7	3	4	-	-
Person-other than injured or ill worker	434	1	-	-	-	-
Relative or domestic partner of injured or ill worker	33	-	-	-	-	-
Co-worker or work associate of injured or ill worker	74	1	-	-	-	-
Assailant suspect inmate	207	-	-	-	-	-
Robber	129	-	-	-	-	-
Plants trees vegetation--not processed	166	6	3	4	-	-
Trees logs limbs	146	6	3	4	-	-
Structures and surfaces	568	6	7	5	9	3
Buildings--office plant residential	41	-	-	-	-	-
Structures other than buildings	119	-	4	-	7	-
Scaffolds staging	79	2	-	-	-	-
Other structural elements	180	-	1	-	-	-
Roofs	126	-	-	-	-	-
Tools instruments and equipment	192	29	21	20	27	22

Table 6 (continued)
Page 2 of 4

Fatal occupational injuries by selected worker characteristics and selected event or exposure, All U.S., all ownerships, 2011 - 2015						
Characteristic	All events	Exposure to electricity (code 51XXXX)				
	2015	2011	2012	2013	2014	2015
Ladders	157	9	11	4	8	10
Vehicles	2195	11	16	13	22	5
Highway vehicles motorized	1655	8	14	11	20	4
Passenger vehicles--automobiles buses and passenger vans	369	-	-	-	-	-
Trucks--motorized freight hauling and utility	926	7	14	11	18	4
Multi-purpose highway vehicles	357	-	-	-	2	-
Off-road and industrial vehicles--powered	303	3	1	-	-	-
Industrial vehicles material hauling and transport--powered	79	-	1	-	-	-
Forklift order picker platform truck--powered	71	-	1	-	-	-
Tractors PTOs	151	-	-	-	-	-
Secondary source (4) (6) :						
Chemicals and chemical products	35	-	-	-	-	-
Containers furniture and fixtures	49	-	-	-	-	-
Machinery	139	4	3	-	4	-
Parts and materials	215	73	73	49	63	47
Machine tool and electric parts	83	71	72	48	62	46
Persons plants animals and minerals	262	-	-	1	-	-
Plants trees vegetation--not processed	234	-	-	1	-	-
Trees logs limbs	232	-	-	1	-	-
Structures and surfaces	478	1	-	3	-	-
Confined spaces	55	1	-	3	-	-
Structures other than buildings	173	-	-	-	-	-
Floors walkways ground surfaces	129	-	-	-	-	-
Tools instruments and equipment	621	-	-	-	-	-
Vehicles	869	1	2	-	-	3
Highway vehicles motorized	771	1	2	-	-	3
Off-road and industrial vehicles--powered	47	-	-	-	-	-
Nature (4) :						
Traumatic injuries to bones nerves spinal cord	180	-	-	-	-	-
Traumatic injuries to muscles tendons ligaments joints etc.	18	-	-	-	-	-
Open wounds	558	-	-	-	-	-
Gunshot wounds	484	-	-	-	-	-
Surface wounds and bruises	3	-	-	-	-	-
Burns and corrosions	78	3	-	6	7	-
Intracranial injuries	803	-	-	-	-	-
Effects of environmental conditions	41	-	-	-	-	-
Multiple traumatic injuries and disorders	1855	-	-	-	-	3
Burns and other injuries except fractures	94	-	-	-	-	-
Intracranial injuries and injuries to internal organs	362	-	-	-	-	-
Other traumatic injuries and disorders	1293	171	154	135	146	130
Asphyxiations strangulations suffocations	259	-	-	-	-	-
Drownings	113	-	-	-	-	-
Electrocutions electric shocks	132	171	154	135	146	130
Internal injuries to organs and blood vessels of the trunk	526	-	-	-	-	-
Other poisoning toxic noxious or allergenic effects	260	-	-	-	-	-
Part of body (4) :						
Head	1004	-	-	-	-	-
Neck including throat	195	-	-	-	-	-
Trunk	785	-	-	-	-	-
Chest including ribs internal organs	362	-	-	-	-	-

Table 6 (continued)
Page 3 of 4

Fatal occupational injuries by selected worker characteristics and selected event or exposure, All U.S., all ownerships, 2011 - 2015						
Characteristic	All events	Exposure to electricity (code 51XXXX)				
		2011	2012	2013	2014	2015
Back including spine spinal cord	57	-	-	-	-	-
Upper extremities	21	-	-	-	-	-
Lower extremities	71	1	-	-	-	-
Body systems	681	171	154	136	147	131
Multiple body parts	2079	-	-	5	7	3
Head and neck	119	-	-	-	-	-
Head neck and trunk	128	-	-	-	-	-
Head and trunk	398	-	-	-	-	-
Other multiple body parts	443	-	-	-	4	3
Whole Body	86	-	-	-	-	-
Worker activity:						
Vehicular and transportation operations	2121	5	-	-	10	5
Using or operating tools machinery	405	41	33	28	34	22
Constructing repairing cleaning	968	102	97	92	88	85
Protective service activities	110	-	-	-	1	-
Materials handling operations	215	16	17	12	13	17
Physical activities	308	4	5	4	5	3
Other activities	374	-	-	-	3	-
Tending a retail establishment waiting on customers	153	-	-	-	-	-
Location:						
Private residence	514	49	46	44	52	40
Farm	393	23	16	9	10	11
Mine and quarry	33	-	-	1	3	-
Industrial place and premises	1034	50	47	46	46	40
Place for recreation and sport	73	3	-	-	3	5
Street and highway	1676	21	18	18	19	17
Public building	528	20	11	12	14	10
Residential institution	16	-	-	-	-	1
Occupation (7) :						
Management occupations	379	5	9	4	8	3
Business and financial operations occupations	31	-	-	-	-	-
Computer and mathematical occupations	8	-	-	-	-	-
Architecture and engineering occupations	37	-	3	-	-	-
Life physical and social science occupations	11	-	1	-	-	-
Community and social services occupations	28	-	-	-	-	-
Legal occupations	12	-	-	-	-	-
Education training and library occupations	19	-	-	-	-	-
Arts design entertainment sports and media occupations	65	-	-	1	-	-
Healthcare practitioners and technical occupations	74	-	-	-	-	-
Healthcare support occupations	23	-	-	-	-	-
Protective service occupations	213	-	-	-	-	1
Food preparation and serving related occupations	56	-	-	-	1	-
Building and grounds cleaning and maintenance occupations	289	21	19	16	17	11
Personal care and service occupations	51	-	-	-	-	-
Sales and related occupations	228	-	-	-	-	-
Office and administrative support occupations	86	-	-	-	-	-
Farming fishing and forestry occupations	284	15	8	7	5	4
Construction and extraction occupations	924	69	76	65	68	68
Installation maintenance and repair occupations	392	37	32	31	33	31
Production occupations	250	11	3	6	8	8
Transportation and material moving occupations	1301	8	5	3	10	7
Military specific occupations (8)	73	-	-	-	-	-

Fatal occupational injuries by selected worker characteristics and selected event or exposure, All U.S., all ownerships, 2011 - 2015						
Characteristic	All events	Exposure to electricity (code 51XXXX)				
	2015	2011	2012	2013	2014	2015
Industry (9) :						
Private industry	4379	166	152	137	147	130
Goods-producing	1980	113	98	94	101	97
Natural resources and mining (10)	690	24	21	14	15	9
Construction	937	69	66	71	74	81
Manufacturing	353	20	11	9	12	7
Service-providing	2399	53	54	43	46	33
Trade transportation and utilities	1231	16	16	13	16	9
Information	42	3	1	-	-	-
Financial activities	83	1	3	-	3	-
Professional and business services	477	23	30	20	19	18
Education and health services	139	-	-	-	-	-
Leisure and hospitality	225	4	-	3	6	-
Other services	202	5	-	5	-	-
Government (11)						
Federal government	118	-	-	-	-	-
State government	81	3	-	-	-	2
Local government	257	5	-	3	6	-
Footnotes						
(1) May include volunteers and workers receiving other types of compensation.						
(2) Includes self-employed workers owners of unincorporated businesses and farms paid and unpaid family workers and may include some owners of incorporated businesses or members of partnerships.						
(3) Persons identified as Hispanic or Latino may be of any race. The race categories shown exclude data for Hispanics and Latinos.						
(4) Based on the BLS Occupational Injury and Illness Classification System (OIICS) 2.01 implemented for 2011 data forward.						
(5) The primary source of a fatal occupational injury is the object substance person bodily motion or exposure which most directly led to produced or inflicted the injury or illness.						
(6) The secondary source of a fatal occupational injury is the object substance person or exposure other than the source if any which most actively generated the source or contributed to the injury or illness.						
(7) CFOI has used several versions of the Standard Occupation Classification (SOC) system since 2003 to define occupation. For more information on the version of SOC used in this year see our definitions page: http://www.bls.gov/iif/oshcdef.htm .						
(8) Includes fatal injuries to persons identified as resident armed forces regardless of individual occupation listed.						
(9) CFOI has used several versions of the North American Industry Classification System (NAICS) since 2003 to define industry. For more information on the version of NAICS used in this year see our definitions page: http://www.bls.gov/iif/oshcdef.htm .						
(10) Includes fatal injuries at all establishments categorized as Mining (Sector 21) in the North American Industry Classification System including establishments not governed by the Mine Safety and Health Administration (MSHA) rules and reporting such as those in Oil and Gas Extraction.						
(11) Includes all fatal occupational injuries meeting this ownership criterion across all specified years regardless of industry classification system.						
NOTE: Totals for major categories may include subcategories not shown separately. Dashes indicate no data reported or data that do not meet publication criteria. N.e.c. means "not elsewhere classified." CFOI fatality counts exclude illness-related deaths unless precipitated by an injury event. Data for all years are final unless footnoted by "P" for preliminary data.						
SOURCE: U.S. Department of Labor Bureau of Labor Statistics in cooperation with State New York City District of Columbia and Federal agencies Census of Fatal Occupational Injuries Dec 19 2016						

Table 7

Number of nonfatal occupational injuries and illnesses involving days away from work (1) by selected worker and case characteristics and event or exposure, All U.S., private industry, 2011 - 2015						
Characteristic	All events	Exposure to electricity (code 51XXXX)				
	2015	2011	2012	2013	2014	2015
Total:	902160	2250	1700	2090	1850	2480
Sex:						
Men	556370	1910	1400	1750	1530	2190
Women	341130	350	280	330	310	270
Age:						
Under 14	-	-	-	-	-	-
14 to 15	130	-	-	-	-	-
16 to 19	23560	30	-	40	80	20
20 to 24	86590	280	250	230	210	260
25 to 34	190500	520	480	450	560	590
35 to 44	187950	560	300	660	580	590
45 to 54	210200	640	430	500	270	540
55 to 64	152590	150	110	190	140	450
65 and over	33850	20	70	-	-	-
Occupation (6) :						
Management business financial	29730	50	90	20	-	40
Computer engineering and science	6530	30	30	30	30	20
Education legal community service arts and media	21820	-	-	-	40	-
Healthcare practitioners and technical	48510	30	30	80	20	40
Service	215320	380	200	380	270	760
Sales and related	58740	30	50	30	60	60
Office and administrative support	64250	50	60	30	20	70
Farming fishing and forestry	15740	20	-	20	-	-
Construction and extraction	72070	580	350	460	600	570
Installation maintenance and repair	84720	700	560	800	450	580
Production	106900	220	240	160	240	300
Transportation and material moving	177030	130	90	60	90	30
Length of service with employer:						
Less than 3 months	103010	260	170	180	120	350
3 months to 11 months	183470	410	310	380	550	500
1 year to 5 years	293100	710	620	970	680	800
More than 5 years	306050	820	580	540	470	810

Table 7 (continued)
Page 2 of 6

Number of nonfatal occupational injuries and illnesses involving days away from work (1) by selected worker and case characteristics and event or exposure, All U.S., private industry, 2011 - 2015						
Characteristic	All events	Exposure to electricity (code 51XXXX)				
	2015	2011	2012	2013	2014	2015
Race or ethnic origin:						
White	347200	1420	750	680	810	1180
Black or African American	73590	160	120	120	160	290
Hispanic or Latino	125360	200	210	190	290	340
Asian	14530	-	40	-	-	20
Native Hawaiian or other Pacific Islander	2490	-	-	-	-	-
American Indian or Alaska Native	4040	-	30	-	40	30
Hispanic and other	460	-	-	-	-	-
Multi-race	1130	-	-	-	-	-
Not reported	333370	450	550	1090	540	630
Number of days away from work:						
Cases involving 1 day	127610	350	570	280	630	330
Cases involving 2 days	100510	400	160	370	220	400
Cases involving 3-5 days	156430	330	250	190	170	530
Cases involving 6-10 days	104900	220	190	120	150	120
Cases involving 11-20 days	96590	270	110	120	120	340
Cases involving 21-30 days	57800	170	60	100	110	100
Cases involving 31 or more days	258330	530	370	900	450	650
Median days away from work (5)	8	6	4	16	4	5
Industry sector:						
Goods producing industries (2)	226320	1030	600	780	1040	1170
Natural resources and mining (2) (3)	23830	30	-	70	30	50
Agriculture forestry fishing and hunting (2)	18660	-	-	60	20	20
Mining (3)	5160	20	-	-	20	20
Construction	79890	610	340	500	630	790
Manufacturing	122610	390	250	210	380	330
Service providing industries	675840	1230	1100	1300	820	1310
Trade transportation and utilities (4)	279150	480	440	720	270	280
Wholesale trade	60340	80	110	50	20	80
Retail trade	123770	260	110	520	100	140
Transportation and warehousing (4)	90990	90	120	50	50	30
Utilities	4060	60	90	100	100	30
Information	14050	30	-	20	70	110
Financial activities	30110	120	40	20	-	90
Finance and insurance	9480	-	20	-	-	20
Real estate and rental and leasing	20630	110	30	-	-	70
Professional and business services	67320	100	210	130	100	140
Professional scientific and technical services	18030	40	70	60	-	-
Management of companies and enterprises	5700	-	-	30	-	20
Administrative and support and waste management and remediation services	43590	60	130	50	70	110

Table 7 (continued)
Page 3 of 6

Number of nonfatal occupational injuries and illnesses involving days away from work (1) by selected worker and case characteristics and event or exposure, All U.S., private industry, 2011 - 2015						
Characteristic	All events	Exposure to electricity (code 51XXXX)				
		2015	2011	2012	2013	2014
Education and health services	168940	210	120	190	170	400
Educational services	10530	-	20	-	-	-
Health care and social assistance	158410	200	100	170	170	390
Leisure and hospitality	92670	260	170	210	160	240
Arts entertainment and recreation	14110	20	50	30	20	60
Accommodation and food services	78560	240	130	190	140	180
Other services	23600	30	110	-	30	50
Other services except public administration	23600	30	110	-	30	50
Public administration	-	-	-	-	-	-
Musculoskeletal disorders (7) :						
Musculoskeletal disorders	286350	-	-	-	-	-
Nature of injury illness (8) :						
Fractures	81180	-	-	-	-	-
Sprains strains tears	324700	-	-	-	-	-
Amputations	5360	-	-	-	-	-
Cuts lacerations punctures	93090	-	-	-	-	-
Cuts lacerations	78790	-	-	-	-	-
Punctures (except gunshot wounds)	14300	-	-	-	-	-
Bruises contusions	76290	-	-	-	-	-
Chemical burns and corrosions	3200	-	-	-	-	-
Heat (thermal) burns	15010	-	-	-	-	-
Multiple traumatic injuries	22800	-	-	-	-	-
With sprains and other injuries	10110	-	-	-	-	-
With fractures and other injuries	3970	-	-	-	-	-
Soreness pain	136300	-	-	-	-	-
Carpal tunnel syndrome	4920	-	-	-	-	-
Tendonitis	2470	-	-	-	-	-
All other	136840	2250	1690	2090	1850	2480
Part of body affected (8) :						
Head	74180	70	80	60	260	70
Eye	20600	40	40	20	-	50
Neck	12430	-	-	-	-	-
Trunk	209360	-	-	20	-	-
Back	155740	-	-	-	-	-
Upper extremities	294420	650	500	220	270	290
Shoulder	72270	-	-	-	-	-
Arm	45760	110	90	40	40	30
Wrist	34210	-	-	-	-	50
Hand	124540	360	370	130	180	210
Lower extremities	202460	-	-	-	-	40
Knee	73810	-	-	-	-	-
Ankle	45780	-	-	-	-	-
Foot	43310	-	-	-	-	-

Table 7 (continued)
Page 4 of 6

Number of nonfatal occupational injuries and illnesses involving days away from work (1) by selected worker and case characteristics and event or exposure, All U.S., private industry, 2011 - 2015						
Characteristic	All events	Exposure to electricity (code 51XXXX)				
		2015	2011	2012	2013	2014
Toe toenail	10240	-	-	-	-	-
Body systems	16560	1200	940	1520	1070	1890
Multiple	86410	310	130	270	240	150
All other	6350	-	30	-	-	30
Source of injury illness (8) :						
Chemicals chemical products	11050	-	-	-	-	-
Containers	101690	20	-	-	-	-
Furniture fixtures	39520	60	50	100	60	210
Machinery	53400	420	380	410	250	480
Parts and materials	73250	1290	990	1370	1270	1090
Person injured or ill worker	135790	-	-	-	-	-
Worker motion or position	128270	-	-	-	-	-
Person other than injured or ill workers	64340	110	-	-	-	-
Health care patient	41820	-	-	-	-	-
Floors walkways ground surfaces	152830	-	-	-	-	-
Handtools	45630	150	60	30	40	270
Ladders	20490	-	-	-	-	-
Vehicles	91410	40	50	20	-	-
Trucks	24000	-	40	-	-	-
Cart dolly hand truck--nonpowered	13140	-	-	-	-	-
All other	112770	170	140	120	190	410
Secondary source of injury illness (8) :						
Containers furniture and fixtures	25180	60	-	-	-	-
Machinery	8170	80	20	20	-	30
Computers and peripheral equipment	1650	-	-	-	-	-
Tools instruments and equipment	13090	30	-	-	70	-
Firearms law enforcement and other self-defense equipment	140	-	-	-	-	-
Vehicles	28710	-	-	-	-	-
Highway vehicle motorized	21510	-	-	-	-	-
Ice sleet snow	26960	-	-	-	-	-
Liquids-nonchemical	17220	30	-	50	-	-
Day of Week:						
Sunday	58630	40	50	140	100	170
Monday	164700	350	280	290	380	430
Tuesday	161400	460	260	420	330	390
Wednesday	154520	430	310	240	230	320
Thursday	153160	460	390	630	250	560
Friday	134790	370	230	270	480	240
Saturday	74960	140	180	100	90	380

Table 7 (continued)
Page 5 of 6

Number of nonfatal occupational injuries and illnesses involving days away from work (1) by selected worker and case characteristics and event or exposure, All U.S., private industry, 2011 - 2015						
Characteristic	All events	Exposure to electricity (code 51XXXX)				
	2015	2011	2012	2013	2014	2015
Time of Day:						
12:01 AM - 4:00 AM	28220	40	40	30	50	50
4:01 AM - 8:00 AM	87270	230	160	130	170	480
8:01 AM - 12:00 PM	251130	920	630	870	500	740
12:01 PM - 4:00 PM	195910	460	400	510	680	380
4:01 PM - 8:00 PM	101440	180	190	210	210	210
8:01 PM - 12:00 AM	55260	90	100	40	100	160
Not reported	182930	350	170	290	150	460
Hours Worked:						
Occurred before shift began	6170	-	-	-	-	-
Less than 1 hour	72910	310	180	90	60	490
1 - 2 hours	83520	170	100	130	120	260
2 - 4 hours	182290	550	470	820	340	370
4 - 6 hours	141690	300	250	280	640	340
6 - 8 hours	119970	350	300	230	350	290
8 - 10 hours	60200	130	80	160	50	180
10 - 12 hours	18300	40	80	30	70	-
12 - 16 hours	7910	-	-	-	20	20
More than 16 hours	950	-	-	-	-	-
Not reported	208250	410	210	330	190	530

Footnotes

- (1) Days away from work include those that result in days away from work with or without job transfer or
(2) Excludes farms with fewer than 11 employees.

(3) Data for mining (Sector 21 in the North American Industry Classification System -- United States 2007) include establishments not governed by the Mine Safety and Health Administration (MSHA) rules and reporting such as those in oil and gas extraction and related support activities. Data for mining operators in coal metal and nonmetal mining are provided to BLS by the Mine Safety and Health Administration U.S. Department of Labor. Independent mining contractors are excluded from the coal metal and nonmetal mining industries. These data do not reflect the changes Occupational Safety and Health Administration made to its recordkeeping requirements effective January 1 2002; therefore estimates for these industries are not comparable with estimates for other industries.

(4) Data for employers in railroad transportation are provided to BLS by the Federal Railroad Administration U.S. Department of Transportation. These data do not reflect the changes Occupational Safety and Health Administration made to its recordkeeping requirements effective January 1 2002; therefore estimates for these industries are not comparable with estimates for other industries.

(5) Median days away from work is the measure used to summarize the varying lengths of absences from work among the cases with days away from work. Half the cases involved more days and half involved less days than a specified median. Median days away from work are represented in actual values.

(6) Standard Occupational Classification Manual 2010 Office of Management and Budget

(7) Musculoskeletal disorders (MSDs) include cases where the nature of the injury or illness is pinched nerve; herniated disc; meniscus tear; sprains strains tears; hernia (traumatic and nontraumatic); pain swelling and numbness; carpal or tarsal tunnel syndrome; Raynaud's syndrome or phenomenon; musculoskeletal system and connective tissue diseases and disorders when the event or exposure leading to the injury or illness is overexertion and bodily reaction unspecified; overexertion involving outside sources; repetitive motion involving microtasks; other and multiple exertions or bodily reactions; and rubbed abraded or jarred by vibration.

Number of nonfatal occupational injuries and illnesses involving days away from work (1) by selected worker and case characteristics and event or exposure, All U.S., private industry, 2011 - 2015

Characteristic	All events	Exposure to electricity (code 51XXXX)				
	2015	2011	2012	2013	2014	2015

(8) Occupational Injury and Illness Classification System 2.01

NOTE: Because of rounding and data exclusion of nonclassifiable responses data may not sum to the totals. Dashes indicate data that do not meet publication guidelines. The scientifically selected probability sample used was one of many possible samples each of which could have produced different estimates. A measure of sampling variability for each estimate is available upon request -- please contact iifstaff@bls.gov or call (202) 691-6170. For additional information about methodology and coding structures see the BLS Handbook of Methods chapter 9: <http://www.bls.gov/opub/hom/homch9.htm> .

SOURCE: Bureau of Labor Statistics U.S. Department of Labor Dec 28 2016

Table 8

Number of nonfatal occupational injuries and illnesses involving days away from work (1) by selected worker and case characteristics and nature of condition, All U.S., all ownerships, 2011 - 2015

Characteristic	All natures	Electrocutions, electric shocks (code 193XXX)				
		2011	2012	2013	2014	2015
Total:	902160	1290	980	1530	1080	1910
Sex:						
Men	556370	1030	740	1230	820	1640
Women	341130	250	240	300	250	250
Age:						
Under 14	-	-	-	-	-	-
14 to 15	130	-	-	-	-	-
16 to 19	23560	30	-	30	80	20
20 to 24	86590	170	200	170	160	180
25 to 34	190500	280	290	330	380	500
35 to 44	187950	220	200	570	240	400
45 to 54	210200	440	180	320	160	460
55 to 64	152590	80	50	120	60	330
65 and over	33850	-	-	-	-	-
Occupation (6) :						
Management business financial	29730	40	60	20	-	40
Computer engineering and science	6530	20	-	20	20	20
Education legal community service arts and media	21820	-	-	-	40	-
Healthcare practitioners and technical	48510	20	30	80	20	30
Service	215320	310	130	300	260	730
Sales and related	58740	30	40	20	40	50
Office and administrative support	64250	20	50	20	20	70
Farming fishing and forestry	15740	-	-	20	-	-
Construction and extraction	72070	220	150	310	150	370
Installation maintenance and repair	84720	370	250	530	260	330
Production	106900	170	160	140	200	230
Transportation and material moving	177030	60	80	60	70	30
Length of service with employer:						
Less than 3 months	103010	140	150	120	70	280
3 months to 11 months	183470	240	170	320	220	440
1 year to 5 years	293100	370	350	790	500	570
More than 5 years	306050	480	300	290	270	600
Race or ethnic origin:						
White	347200	790	370	460	380	970
Black or African American	73590	100	50	100	150	260
Hispanic or Latino	125360	70	120	100	210	230
Asian	14530	-	20	-	-	-
Native Hawaiian or other Pacific Islander	2490	-	-	-	-	-
American Indian or Alaska Native	4040	-	30	-	-	-
Hispanic and other	460	-	-	-	-	-
Multi-race	1130	-	-	-	-	-
Not reported	333370	330	390	860	300	430
Number of days away from work:						
Cases involving 1 day	127610	290	420	220	350	270
Cases involving 2 days	100510	270	140	350	180	370
Cases involving 3-5 days	156430	220	100	90	140	440
Cases involving 6-10 days	104900	90	80	70	60	80
Cases involving 11-20 days	96590	100	40	70	50	190
Cases involving 21-30 days	57800	70	20	20	60	50
Cases involving 31 or more days	258330	240	160	720	240	510
Median days away from work (5)	8	4	2	16	3	5

Table 8 (continued)
Page 2 of 4

Number of nonfatal occupational injuries and illnesses involving days away from work (1) by selected worker and case characteristics and nature of condition, All U.S., all ownerships, 2011 - 2015						
Characteristic	All natures	Electrocutions, electric shocks (code 193XXX)				
		2011	2012	2013	2014	2015
Industry sector:						
Goods producing industries (2)	226320	460	320	570	440	840
Natural resources and mining (2) (3)	23830	-	-	50	20	30
Agriculture forestry fishing and hunting (2)	18660	-	-	50	20	20
Mining (3)	5160	-	-	-	-	-
Construction	79890	190	140	340	170	610
Manufacturing	122610	250	170	170	260	200
Service providing industries	675840	830	660	970	640	1060
Trade transportation and utilities (4)	279150	330	250	550	180	210
Wholesale trade	60340	-	30	40	-	50
Retail trade	123770	250	90	480	90	120
Transportation and warehousing (4)	90990	60	90	20	40	20
Utilities	4060	20	30	-	30	20
Information	14050	30	-	20	60	60
Financial activities	30110	20	-	-	-	30
Finance and insurance	9480	-	-	-	-	20
Real estate and rental and leasing	20630	-	-	-	-	-
Professional and business services	67320	90	160	70	70	120
Professional scientific and technical services	18030	30	40	-	-	-
Management of companies and enterprises	5700	-	-	-	-	-
Administrative and support and waste management and remediation services	43590	60	110	30	50	110
Education and health services	168940	120	60	170	160	380
Educational services	10530	-	-	-	-	-
Health care and social assistance	158410	110	60	150	160	370
Leisure and hospitality	92670	240	100	160	140	220
Arts entertainment and recreation	14110	20	30	-	-	60
Accommodation and food services	78560	220	70	140	130	150
Other services	23600	-	70	-	-	50
Other services except public administration	23600	-	70	-	-	50
Public administration	-	-	-	-	-	-
Musculoskeletal disorders (7) :						
Musculoskeletal disorders	286350	-	-	-	-	-
Event or exposure (8) :						
Violence and other injuries by persons or animal	38440	-	-	-	-	-
Intentional injury by other person	16160	-	-	-	-	-
Injury by person unintentional or intent unknown	9930	-	-	-	-	-
Animal and insect related incidents	12020	-	-	-	-	-
Transportation incidents	46360	-	-	-	-	-
Roadway incidents involving motorized land vehicles	31130	-	-	-	-	-
Fires explosions	1270	-	-	-	-	-
Falls slips trips	238610	-	-	-	-	-
Slips trips without fall	34140	-	-	-	-	-
Fall on same level	149180	-	-	-	-	-
Fall to lower level	50490	-	-	-	-	-
Exposure to harmful substances or environments	40250	1290	970	1530	1080	1900
Contact with object equipment	232120	-	-	-	-	-
Struck by object	135280	-	-	-	-	-
Struck against object	50160	-	-	-	-	-
Caught in object equipment material	33400	-	-	-	-	-
Overexertion and bodily reaction	300600	-	-	-	-	-
Overexertion in lifting or lowering	94420	-	-	-	-	-
Repetitive motion involving microtasks	21230	-	-	-	-	-
All other	4520	-	-	-	-	-

Number of nonfatal occupational injuries and illnesses involving days away from work (1) by selected worker and case characteristics and nature of condition, All U.S., all ownerships, 2011 - 2015						
Characteristic	All natures	Electrocutions, electric shocks (code 193XXX)				
	2015	2011	2012	2013	2014	2015
Part of body affected (8) :						
Head	74180	-	-	-	-	-
Eye	20600	-	-	-	-	-
Neck	12430	-	-	-	-	-
Trunk	209360	-	-	-	-	-
Back	155740	-	-	-	-	-
Upper extremities	294420	80	20	-	-	-
Shoulder	72270	-	-	-	-	-
Arm	45760	-	-	-	-	-
Wrist	34210	-	-	-	-	-
Hand	124540	70	-	-	-	-
Lower extremities	202460	-	-	-	-	-
Knee	73810	-	-	-	-	-
Ankle	45780	-	-	-	-	-
Foot	43310	-	-	-	-	-
Toe toenail	10240	-	-	-	-	-
Body systems	16560	1200	940	1520	1070	1900
Multiple	86410	-	-	-	-	-
All other	6350	-	-	-	-	-
Source of injury illness (8) :						
Chemicals chemical products	11050	-	-	-	-	-
Containers	101690	20	-	-	-	-
Furniture fixtures	39520	50	30	90	50	200
Machinery	53400	380	320	360	200	400
Parts and materials	73250	610	430	930	610	640
Person injured or ill worker	135790	-	-	-	-	-
Worker motion or position	128270	-	-	-	-	-
Person other than injured or ill workers	64340	-	-	-	-	-
Health care patient	41820	-	-	-	-	-
Floors walkways ground surfaces	152830	-	-	-	-	-
Handtools	45630	100	40	30	30	260
Ladders	20490	-	-	-	-	-
Vehicles	91410	40	40	-	-	-
Trucks	24000	-	-	-	-	-
Cart dolly hand truck--nonpowered	13140	-	-	-	-	-
All other	112770	90	90	70	160	380
Secondary source of injury illness (8) :						
Containers furniture and fixtures	25180	-	-	-	-	-
Machinery	8170	60	-	-	-	-
Computers and peripheral equipment	1650	-	-	-	-	-
Tools instruments and equipment	13090	-	-	-	50	-
Firearms law enforcement and other self-defense equipment	140	-	-	-	-	-
Vehicles	28710	-	-	-	-	-
Highway vehicle motorized	21510	-	-	-	-	-
Ice sleet snow	26960	-	-	-	-	-
Liquids-nonchemical	17220	30	-	50	-	-
Day of Week:						
Sunday	58630	40	30	120	80	160
Monday	164700	180	170	180	300	290
Tuesday	161400	260	130	360	200	290
Wednesday	154520	190	180	140	140	270
Thursday	153160	270	180	540	180	420
Friday	134790	270	120	110	110	130
Saturday	74960	80	160	80	70	360

Number of nonfatal occupational injuries and illnesses involving days away from work (1) by selected worker and case characteristics and nature of condition, All U.S., all ownerships, 2011 - 2015						
Characteristic	All natures 2015	Electrocutions, electric shocks (code 193XXX)				
		2011	2012	2013	2014	2015
Time of Day:						
12:01 AM - 4:00 AM	28220	30	-	30	20	50
4:01 AM - 8:00 AM	87270	150	60	80	90	420
8:01 AM - 12:00 PM	251130	520	380	690	290	560
12:01 PM - 4:00 PM	195910	210	270	380	330	270
4:01 PM - 8:00 PM	101440	100	130	180	180	160
8:01 PM - 12:00 AM	55260	70	50	30	60	140
Not reported	182930	200	80	140	110	320
Hours Worked:						
Occurred before shift began	6170	-	-	-	-	-
Less than 1 hour	72910	140	60	60	40	440
1 - 2 hours	83520	110	60	80	50	180
2 - 4 hours	182290	380	300	710	190	260
4 - 6 hours	141690	160	140	200	270	250
6 - 8 hours	119970	200	200	190	280	250
8 - 10 hours	60200	20	70	100	30	150
10 - 12 hours	18300	-	70	20	70	-
12 - 16 hours	7910	-	-	-	-	-
More than 16 hours	950	-	-	-	-	-
Not reported	208250	250	90	150	120	370
Footnotes						
(1) Days away from work include those that result in days away from work with or without job transfer or restriction.						
(2) Excludes farms with fewer than 11 employees.						
(3) Data for mining (Sector 21 in the North American Industry Classification System -- United States 2007) include establishments not governed by the Mine Safety and Health Administration (MSHA) rules and reporting such as those in oil and gas extraction and related support activities. Data for mining operators in coal metal and nonmetal mining are provided to BLS by the Mine Safety and Health Administration U.S. Department of Labor. Independent mining contractors are excluded from the coal metal and nonmetal mining industries. These data do not reflect the changes Occupational Safety and Health Administration made to its recordkeeping requirements effective January 1 2002; therefore estimates for these industries are not comparable with estimates for other industries.						
(4) Data for employers in railroad transportation are provided to BLS by the Federal Railroad Administration U.S. Department of Transportation. These data do not reflect the changes Occupational Safety and Health Administration made to its recordkeeping requirements effective January 1 2002; therefore estimates for these industries are not comparable with estimates for other industries.						
(5) Median days away from work is the measure used to summarize the varying lengths of absences from work among the cases with days away from work. Half the cases involved more days and half involved less days than a specified median. Median days away from work are represented in actual values.						
(6) Standard Occupational Classification Manual 2010 Office of Management and Budget						
(7) Musculoskeletal disorders (MSDs) include cases where the nature of the injury or illness is pinched nerve; herniated disc; meniscus tear; sprains strains tears; hernia (traumatic and nontraumatic); pain swelling and numbness; carpal or tarsal tunnel syndrome; Raynaud's syndrome or phenomenon; musculoskeletal system and connective tissue diseases and disorders when the event or exposure leading to the injury or illness is overexertion and bodily reaction unspecified; overexertion involving outside sources; repetitive motion involving microtasks; other and multiple exertions or bodily reactions; and rubbed abraded or jarred by vibration.						
(8) Occupational Injury and Illness Classification System 2.01						
NOTE: Because of rounding and data exclusion of nonclassifiable responses data may not sum to the totals. Dashes indicate data that do not meet publication guidelines. The scientifically selected probability sample used was one of many possible samples each of which could have produced different estimates. A measure of sampling variability for each estimate is available upon request -- please contact iifstaff@bls.gov or call (202) 691-6170. For additional information about methodology and coding structures see the BLS Handbook of Methods chapter 9: http://www.bls.gov/pub/hom/homch9.htm .						
SOURCE: Bureau of Labor Statistics U.S. Department of Labor Dec 27 2016						

Table 9

Number of nonfatal occupational injuries and illnesses involving days away from work (1) by selected worker and case characteristics and nature of condition, All U.S., all ownerships, 2011 - 2015						
Characteristic	All natures	Electrical burns (code 153XXX)				
		2011	2012	2013	2014	2015
Total:	902160	1020	740	560	780	580
Sex:						
Men	556370	920	680	520	730	550
Women	341130	90	50	30	50	20
Age:						
Under 14	-	-	-	-	-	-
14 to 15	130	-	-	-	-	-
16 to 19	23560	-	-	20	-	-
20 to 24	86590	110	50	60	60	90
25 to 34	190500	250	200	120	180	90
35 to 44	187950	340	110	90	340	190
45 to 54	210200	230	250	190	110	80
55 to 64	152590	70	70	70	80	120
65 and over	33850	-	70	-	-	-
Occupation (6) :						
Management business financial	29730	-	20	-	-	-
Computer engineering and science	6530	-	30	-	20	-
Education legal community service arts and media	21820	-	-	-	-	-
Healthcare practitioners and technical	48510	-	-	-	-	-
Service	215320	70	70	80	20	30
Sales and related	58740	-	-	-	30	-
Office and administrative support	64250	20	-	-	-	-
Farming fishing and forestry	15740	-	-	-	-	-
Construction and extraction	72070	390	210	150	460	190
Installation maintenance and repair	84720	340	310	270	190	250
Production	106900	50	80	20	40	70
Transportation and material moving	177030	70	-	-	20	-
Length of service with employer:						
Less than 3 months	103010	120	20	60	50	80
3 months to 11 months	183470	200	140	60	340	60
1 year to 5 years	293100	350	270	190	180	230
More than 5 years	306050	350	300	250	200	220
Race or ethnic origin:						
White	347200	650	380	220	430	210
Black or African American	73590	60	60	20	20	20
Hispanic or Latino	125360	150	100	90	80	100
Asian	14530	-	20	-	-	20
Native Hawaiian or other Pacific Islander	2490	-	-	-	-	-
American Indian or Alaska Native	4040	-	-	-	-	30
Hispanic and other	460	-	-	-	-	-
Multi-race	1130	-	-	-	-	-
Not reported	333370	140	180	230	240	200
Number of days away from work:						
Cases involving 1 day	127610	60	150	70	280	70
Cases involving 2 days	100510	120	20	30	50	30
Cases involving 3-5 days	156430	110	150	100	40	90
Cases involving 6-10 days	104900	150	110	50	100	50
Cases involving 11-20 days	96590	170	80	50	70	150
Cases involving 21-30 days	57800	110	30	80	50	50
Cases involving 31 or more days	258330	290	210	180	210	140
Median days away from work (5)	8	13	7	15	9	13

Table 9 (continued)
Page 2 of 4

Number of nonfatal occupational injuries and illnesses involving days away from work (1) by selected worker and case characteristics and nature of condition, All U.S., all ownerships, 2011 - 2015						
Characteristic	All natures	Electrical burns (code 153XXX)				
		2011	2012	2013	2014	2015
Industry sector:						
Goods producing industries (2)	226320	600	310	230	610	330
Natural resources and mining (2) (3)	23830	30	-	30	30	-
Agriculture forestry fishing and hunting (2)	18660	-	-	-	-	-
Mining (3)	5160	30	-	20	20	-
Construction	79890	430	210	160	460	190
Manufacturing	122610	140	90	40	120	130
Service providing industries	675840	420	430	340	170	250
Trade transportation and utilities (4)	279150	170	180	180	100	80
Wholesale trade	60340	60	80	-	-	40
Retail trade	123770	-	20	40	-	20
Transportation and warehousing (4)	90990	40	20	30	-	-
Utilities	4060	50	50	90	70	20
Information	14050	-	-	-	-	50
Financial activities	30110	100	30	20	-	60
Finance and insurance	9480	-	-	-	-	-
Real estate and rental and leasing	20630	100	-	-	-	60
Professional and business services	67320	-	50	60	30	20
Professional scientific and technical services	18030	-	30	-	-	-
Management of companies and enterprises	5700	-	-	-	-	20
Administrative and support and waste management and remediation services	43590	-	20	20	30	-
Education and health services	168940	100	60	20	-	20
Educational services	10530	-	-	-	-	-
Health care and social assistance	158410	100	40	20	-	20
Leisure and hospitality	92670	20	70	60	20	20
Arts entertainment and recreation	14110	-	20	-	-	-
Accommodation and food services	78560	20	50	40	-	20
Other services	23600	30	40	-	-	-
Other services except public administration	23600	30	40	-	-	-
Public administration	-	-	-	-	-	-
Musculoskeletal disorders (7) :						
Musculoskeletal disorders	286350	-	-	-	-	-
Event or exposure (8) :						
Violence and other injuries by persons or animal	38440	-	-	-	-	-
Intentional injury by other person	16160	-	-	-	-	-
Injury by person unintentional or intent unknown	9930	-	-	-	-	-
Animal and insect related incidents	12020	-	-	-	-	-
Transportation incidents	46360	-	-	-	-	-
Roadway incidents involving motorized land vehicles	31130	-	-	-	-	-
Fires explosions	1270	40	20	-	-	-
Falls slips trips	238610	-	-	-	-	-
Slips trips without fall	34140	-	-	-	-	-
Fall on same level	149180	-	-	-	-	-
Fall to lower level	50490	-	-	-	-	-
Exposure to harmful substances or environments	40250	970	720	560	770	580
Contact with object equipment	232120	-	-	-	-	-
Struck by object	135280	-	-	-	-	-
Struck against object	50160	-	-	-	-	-
Caught in object equipment material	33400	-	-	-	-	-
Overexertion and bodily reaction	300600	-	-	-	-	-
Overexertion in lifting or lowering	94420	-	-	-	-	-
Repetitive motion involving microtasks	21230	-	-	-	-	-
All other	4520	-	-	-	-	-

Number of nonfatal occupational injuries and illnesses involving days away from work (1) by selected worker and case characteristics and nature of condition, All U.S., all ownerships, 2011 - 2015						
Characteristic	All natures	Electrical burns (code 153XXX)				
		2011	2012	2013	2014	2015
Part of body affected (8) :						
Head	74180	70	90	60	250	70
Eye	20600	40	40	20	-	50
Neck	12430	-	-	-	-	-
Trunk	209360	-	-	20	-	-
Back	155740	-	-	-	-	-
Upper extremities	294420	570	490	210	260	290
Shoulder	72270	-	-	-	-	-
Arm	45760	100	70	40	40	30
Wrist	34210	-	-	-	-	50
Hand	124540	290	370	130	180	210
Lower extremities	202460	-	-	-	-	40
Knee	73810	-	-	-	-	-
Ankle	45780	-	-	-	-	-
Foot	43310	-	-	-	-	-
Toe toenail	10240	-	-	-	-	-
Body systems	16560	-	-	-	-	-
Multiple	86410	340	120	270	240	150
All other	6350	-	30	-	-	30
Source of injury illness (8) :						
Chemicals chemical products	11050	-	-	-	-	-
Containers	101690	-	-	-	-	-
Furniture fixtures	39520	-	20	-	-	-
Machinery	53400	60	70	50	40	70
Parts and materials	73250	700	570	450	660	460
Person injured or ill worker	135790	-	-	-	-	-
Worker motion or position	128270	-	-	-	-	-
Person other than injured or ill workers	64340	110	-	-	-	-
Health care patient	41820	-	-	-	-	-
Floors walkways ground surfaces	152830	-	-	-	-	-
Handtools	45630	50	20	-	-	-
Ladders	20490	-	-	-	-	-
Vehicles	91410	-	-	-	-	-
Trucks	24000	-	-	-	-	-
Cart dolly hand truck--nonpowered	13140	-	-	-	-	-
All other	112770	90	50	50	30	30
Secondary source of injury illness (8) :						
Containers furniture and fixtures	25180	-	-	-	-	-
Machinery	8170	20	-	-	-	20
Computers and peripheral equipment	1650	-	-	-	-	-
Tools instruments and equipment	13090	30	-	-	20	-
Firearms law enforcement and other self-defense equipment	140	-	-	-	-	-
Vehicles	28710	-	-	-	-	-
Highway vehicle motorized	21510	-	-	-	-	-
Ice sleet snow	26960	-	-	-	-	-
Liquids-nonchemical	17220	-	-	-	-	-
Day of Week:						
Sunday	58630	30	20	20	20	-
Monday	164700	170	100	110	80	150
Tuesday	161400	210	140	60	130	100
Wednesday	154520	250	130	100	90	60
Thursday	153160	190	220	90	70	140
Friday	134790	110	120	160	370	110
Saturday	74960	60	20	20	20	20

Number of nonfatal occupational injuries and illnesses involving days away from work (1) by selected worker and case characteristics and nature of condition, All U.S., all ownerships, 2011 - 2015

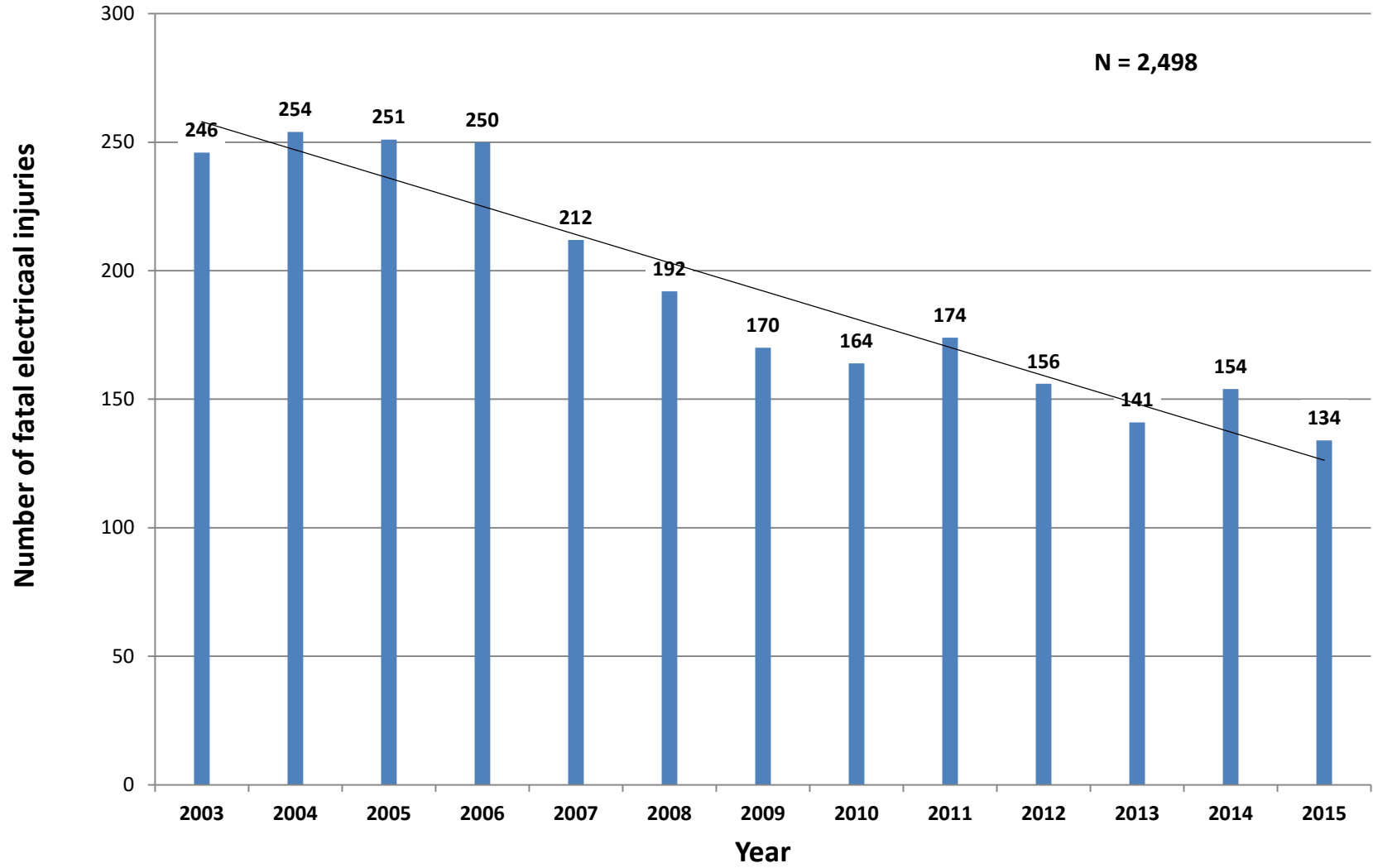
Characteristic	All natures	Electrical burns (code 153XXX)				
	2015	2011	2012	2013	2014	2015
Time of Day:						
12:01 AM - 4:00 AM	28220	-	30	-	20	-
4:01 AM - 8:00 AM	87270	80	110	50	90	70
8:01 AM - 12:00 PM	251130	410	260	180	210	180
12:01 PM - 4:00 PM	195910	270	140	130	360	110
4:01 PM - 8:00 PM	101440	80	60	40	30	50
8:01 PM - 12:00 AM	55260	20	50	-	40	20
Not reported	182930	140	100	150	40	140
Hours Worked:						
Occurred before shift began	6170	-	-	-	-	-
Less than 1 hour	72910	160	130	30	20	40
1 - 2 hours	83520	80	40	50	70	80
2 - 4 hours	182290	180	190	110	140	110
4 - 6 hours	141690	140	110	80	370	90
6 - 8 hours	119970	160	110	40	70	40
8 - 10 hours	60200	110	-	60	20	30
10 - 12 hours	18300	20	20	-	-	-
12 - 16 hours	7910	-	-	-	-	20
More than 16 hours	950	-	-	-	-	-
Not reported	208250	170	130	180	80	150

Footnotes

- (1) Days away from work include those that result in days away from work with or without job transfer or restriction.
- (2) Excludes farms with fewer than 11 employees.
- (3) Data for mining (Sector 21 in the North American Industry Classification System -- United States 2007) include establishments not governed by the Mine Safety and Health Administration (MSHA) rules and reporting such as those in oil and gas extraction and related support activities. Data for mining operators in coal metal and nonmetal mining are provided to BLS by the Mine Safety and Health Administration U.S. Department of Labor. Independent mining contractors are excluded from the coal metal and nonmetal mining industries. These data do not reflect the changes Occupational Safety and Health Administration made to its recordkeeping requirements effective January 1 2002; therefore estimates for these industries are not comparable with estimates for other industries.
- (4) Data for employers in railroad transportation are provided to BLS by the Federal Railroad Administration U.S. Department of Transportation. These data do not reflect the changes Occupational Safety and Health Administration made to its recordkeeping requirements effective January 1 2002; therefore estimates for these industries are not comparable with estimates for other industries.
- (5) Median days away from work is the measure used to summarize the varying lengths of absences from work among the cases with days away from work. Half the cases involved more days and half involved less days than a specified median. Median days away from work are represented in actual values.
- (6) Standard Occupational Classification Manual 2010 Office of Management and Budget
- (7) Musculoskeletal disorders (MSDs) include cases where the nature of the injury or illness is pinched nerve; herniated disc; meniscus tear; sprains strains tears; hernia (traumatic and nontraumatic); pain swelling and numbness; carpal or tarsal tunnel syndrome; Raynaud's syndrome or phenomenon; musculoskeletal system and connective tissue diseases and disorders when the event or exposure leading to the injury or illness is overexertion and bodily reaction unspecified; overexertion involving outside sources; repetitive motion involving microtasks; other and multiple exertions or bodily reactions; and rubbed abraded or jarred by vibration.
- (8) Occupational Injury and Illness Classification System 2.01

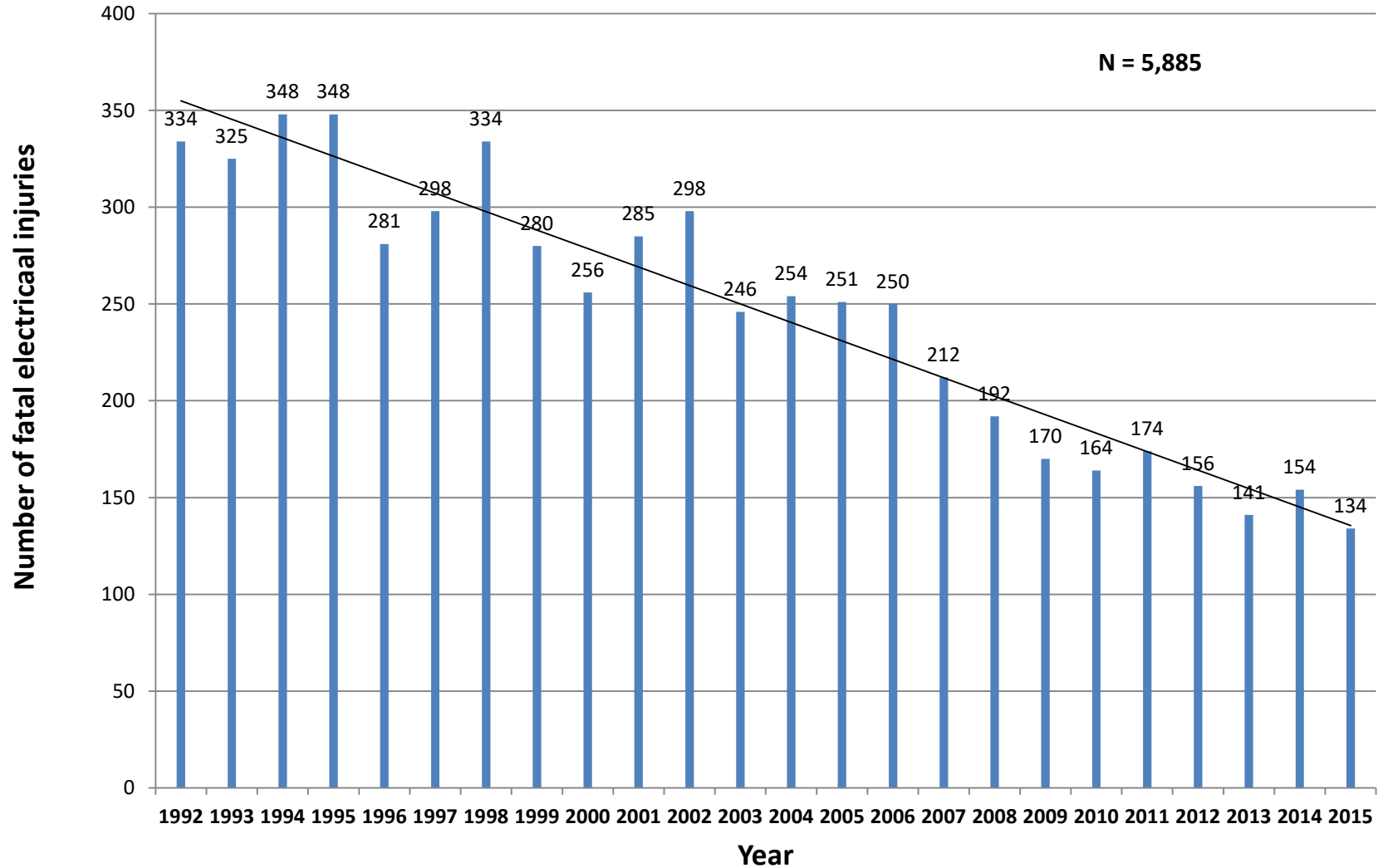
NOTE: Because of rounding and data exclusion of nonclassifiable responses data may not sum to the totals. Dashes indicate data that do not meet publication guidelines. The scientifically selected probability sample used was one of many possible samples each of which could have produced different estimates. A measure of sampling variability for each estimate is available upon request -- please contact iifstaff@bls.gov or call (202) 691-6170. For additional information about methodology and coding structures see the BLS Handbook of Methods chapter 9: <http://www.bls.gov/opub/hom/homch9.htm> .
SOURCE: Bureau of Labor Statistics U.S. Department of Labor Dec 27 2016

Number of fatal electrical injuries, by Event Code, all ownerships, 2003-2015



Compiled by the Electrical Safety Foundation International using data from the U.S. Bureau of Labor Statistics, CFOI, 2003 -2015

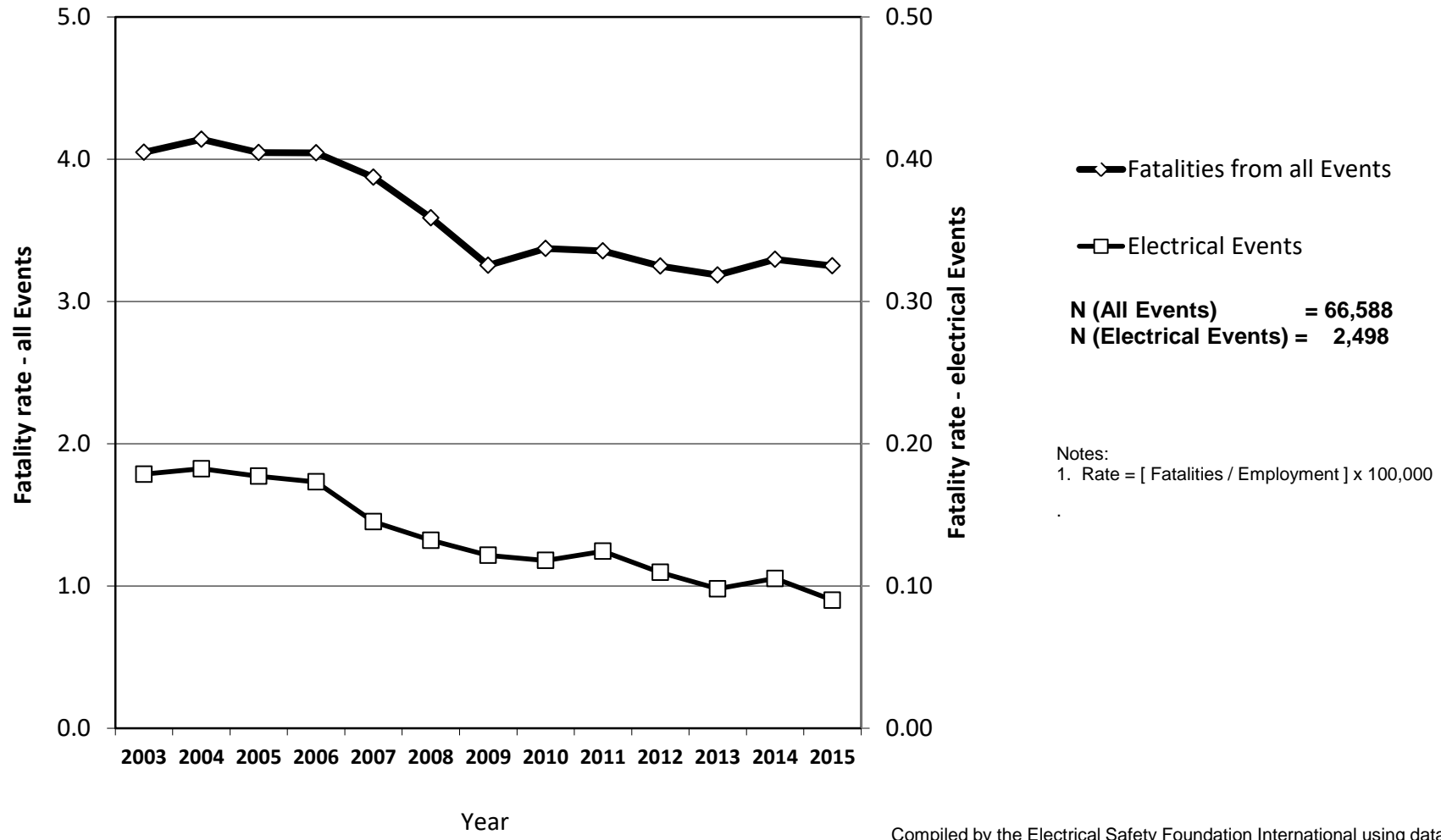
Number of fatal electrical injuries, by Event Code, all ownerships, 1992-2015 ¹



¹ Data from 1992-2002 were collected using different definitions of industries and occupations than data from 2003-2010, and for "EVENTS" codes in 2011-2015. Changes to total electrical fatalities for the period shown are believed to be negligible.

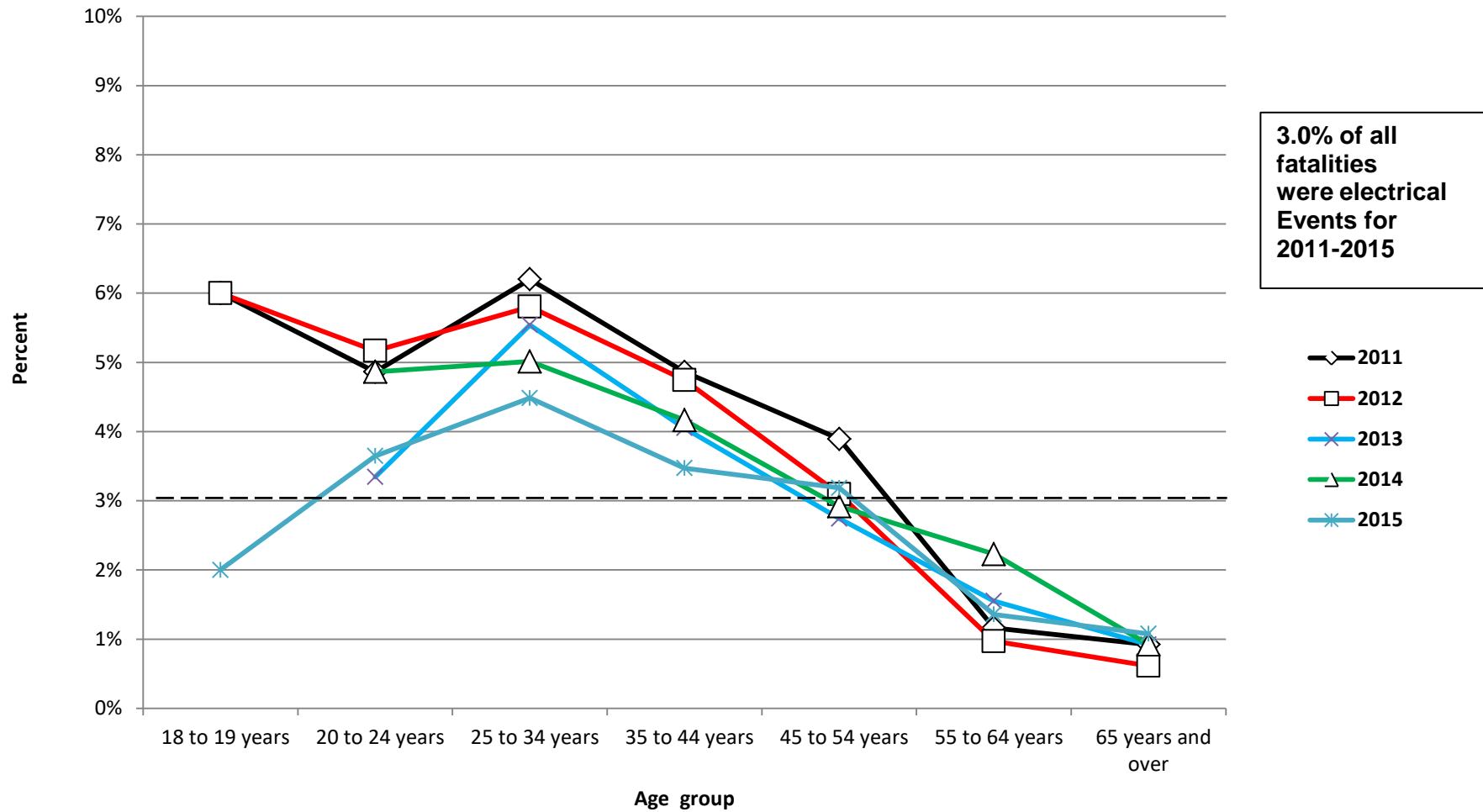
Fig. 2

Fatality rates for all Events vs. electrical Events, 2003-2015



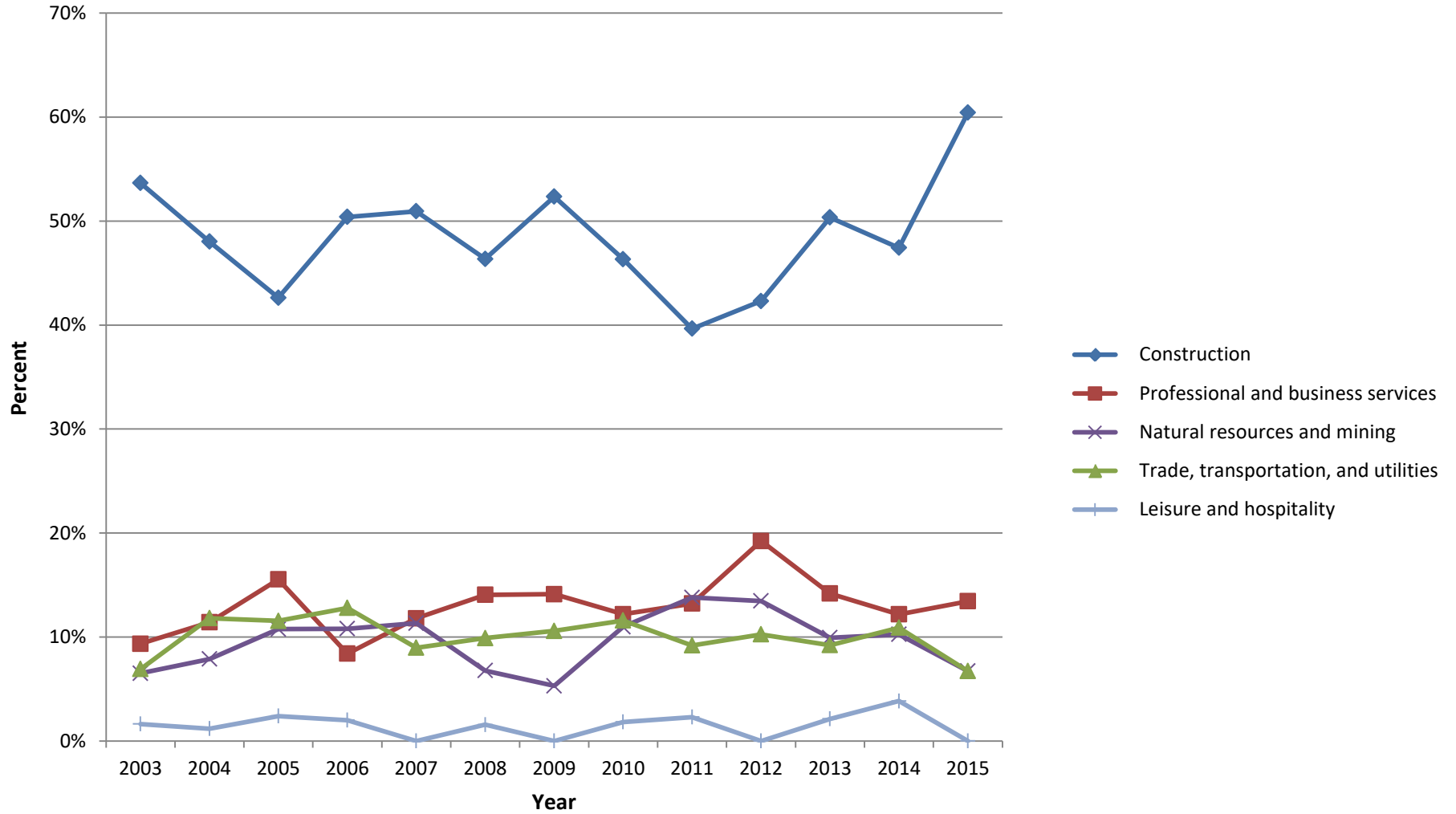
Compiled by the Electrical Safety Foundation International using data from the BLS, CFOI, 2003-2015, and the Current Population Survey

Electrical fatalities by age group as a pct. of fatalities from all Events, all ownerships, 2011-2015



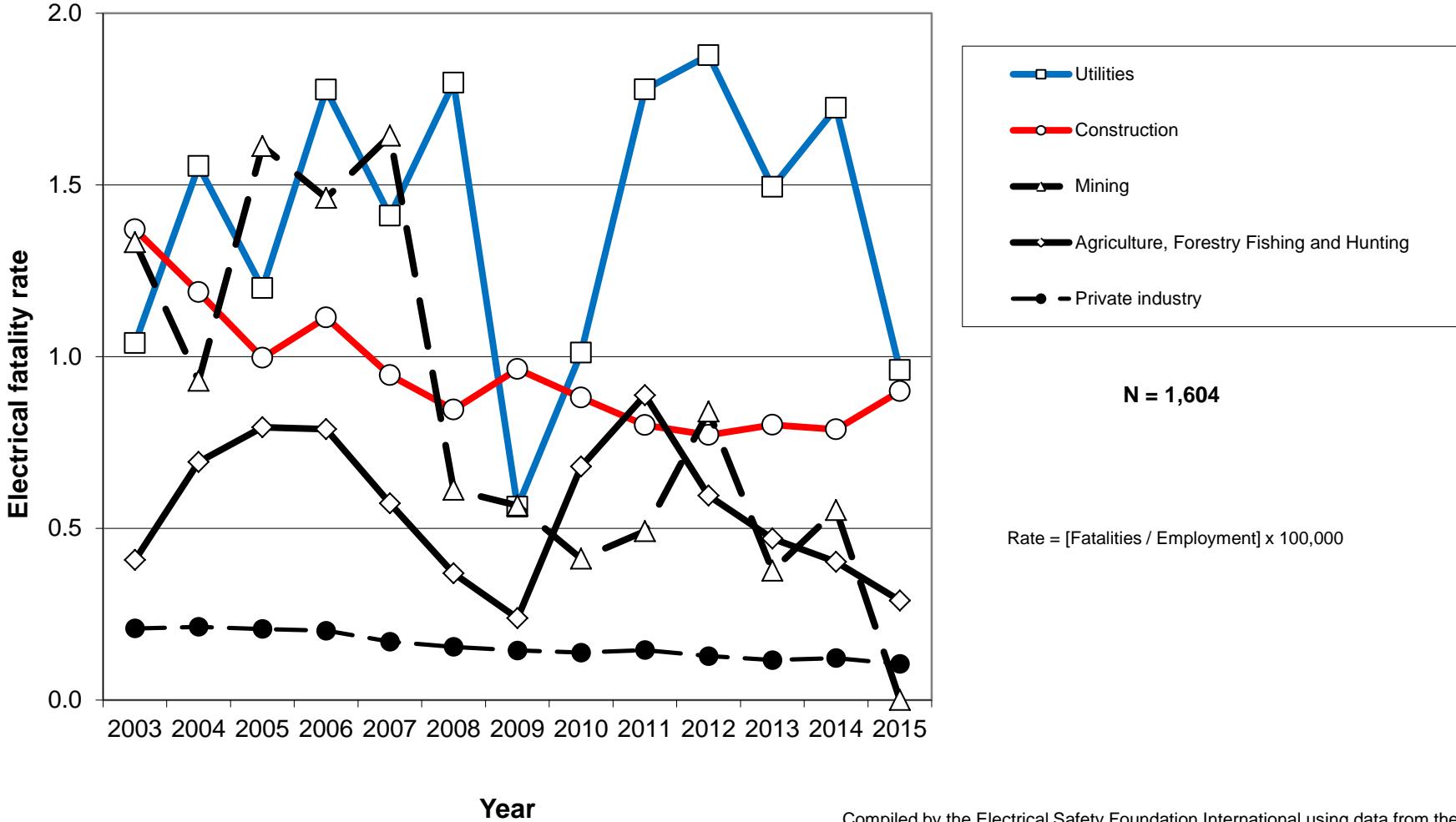
Compiled by the Electrical Safety Foundation International
using data from the U.S. Bureau of Labor Statistics, CFOI, 2011-2015

Number of electrical fatalities by selected industry group as a pct. of total electrical fatalities, 2003-2015



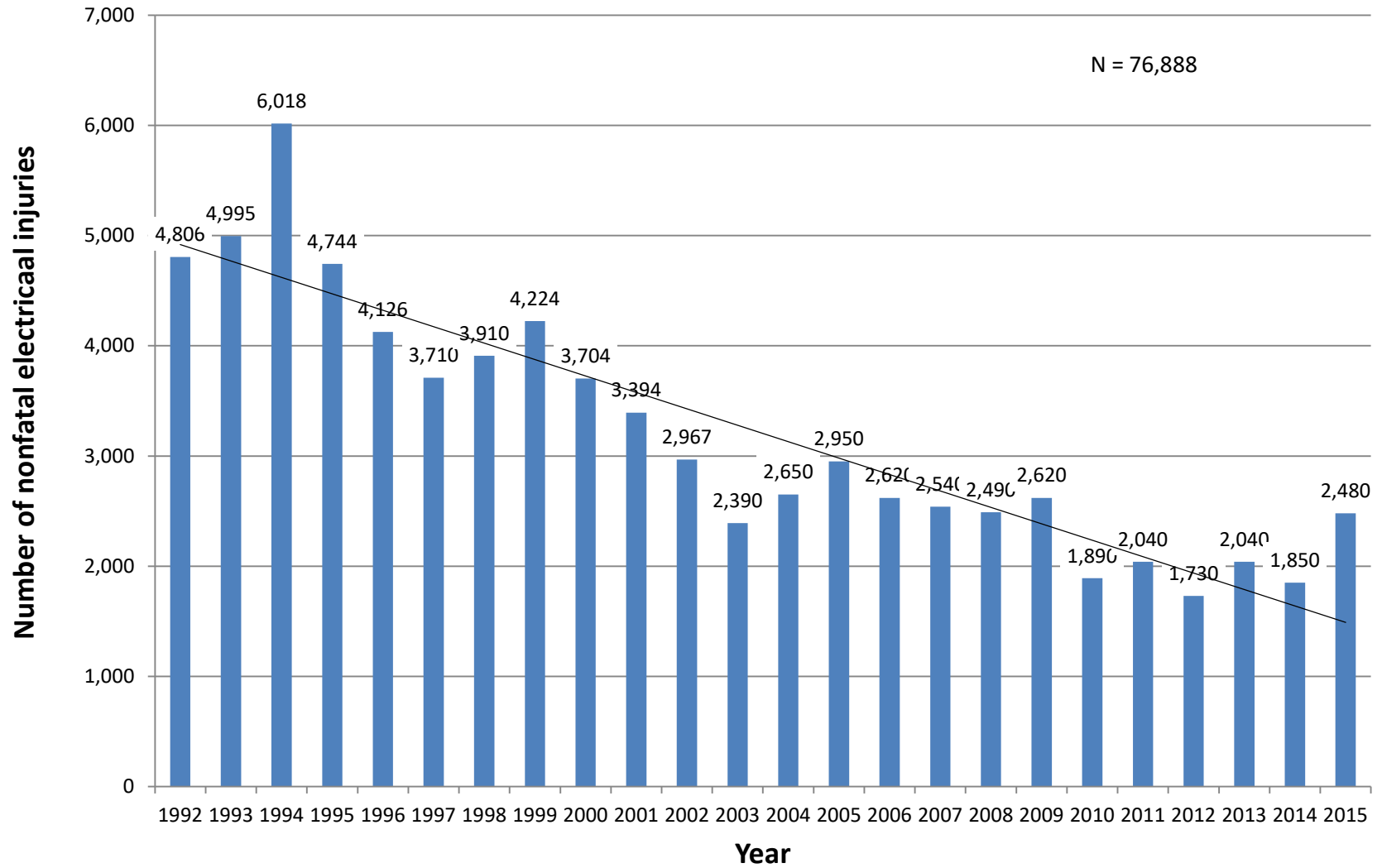
Compiled by the Electrical Safety Foundation International using data from the U.S. Bureau of Labor Statistics, CFOI, 2003-2015

Electrical fatality rates for selected industries, Private Industry, 2003-2015



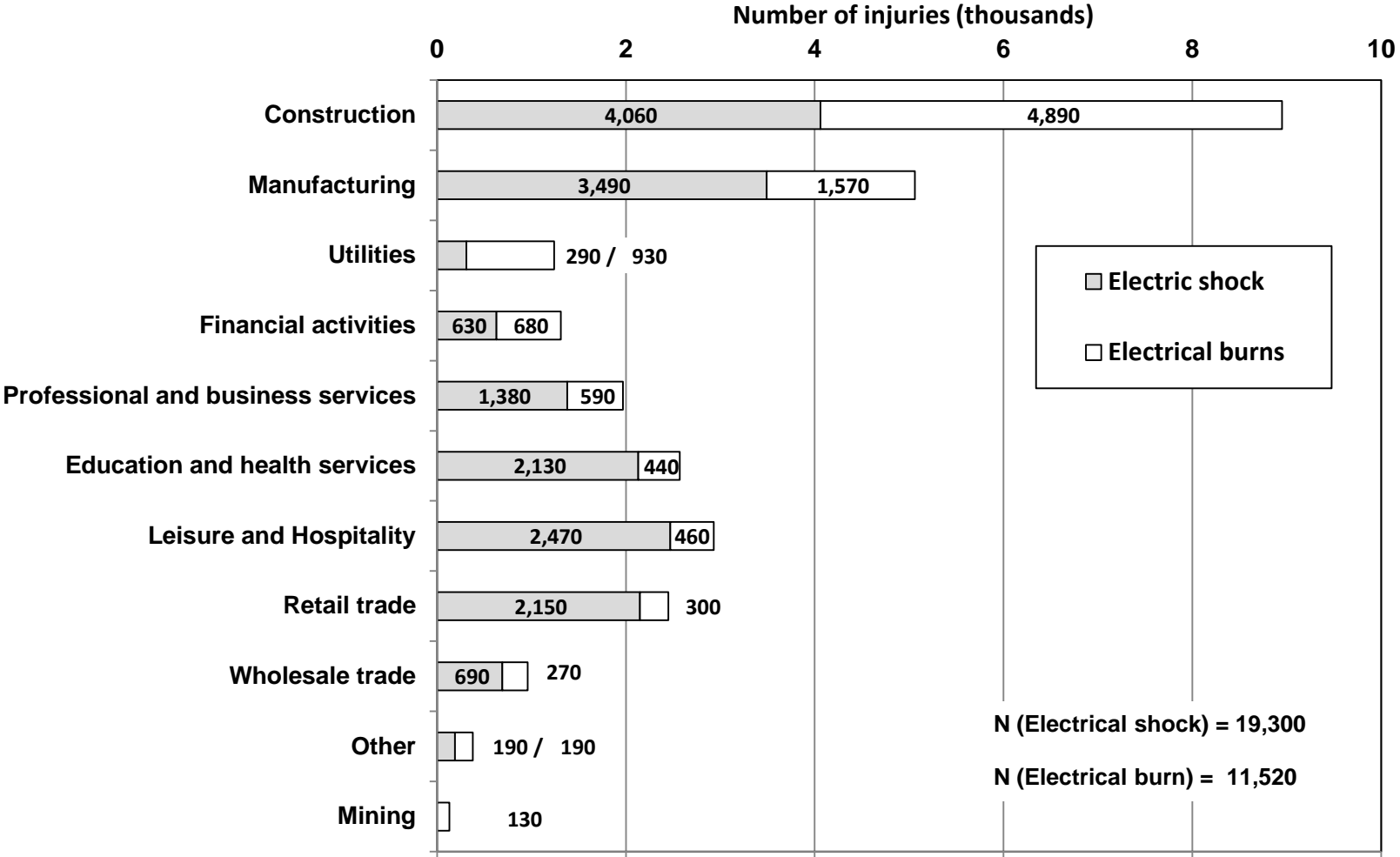
Compiled by the Electrical Safety Foundation International using data from the U.S. Department of Labor, Bureau of Labor Statistics, CFOI, 2003-2015

Number of nonfatal electrical injuries, by Event, Private Industry, 1992-2015



Compiled by the Electrical Safety Foundation International
using data from the U.S. Bureau of Labor Statistics, SOII, 1992-2015

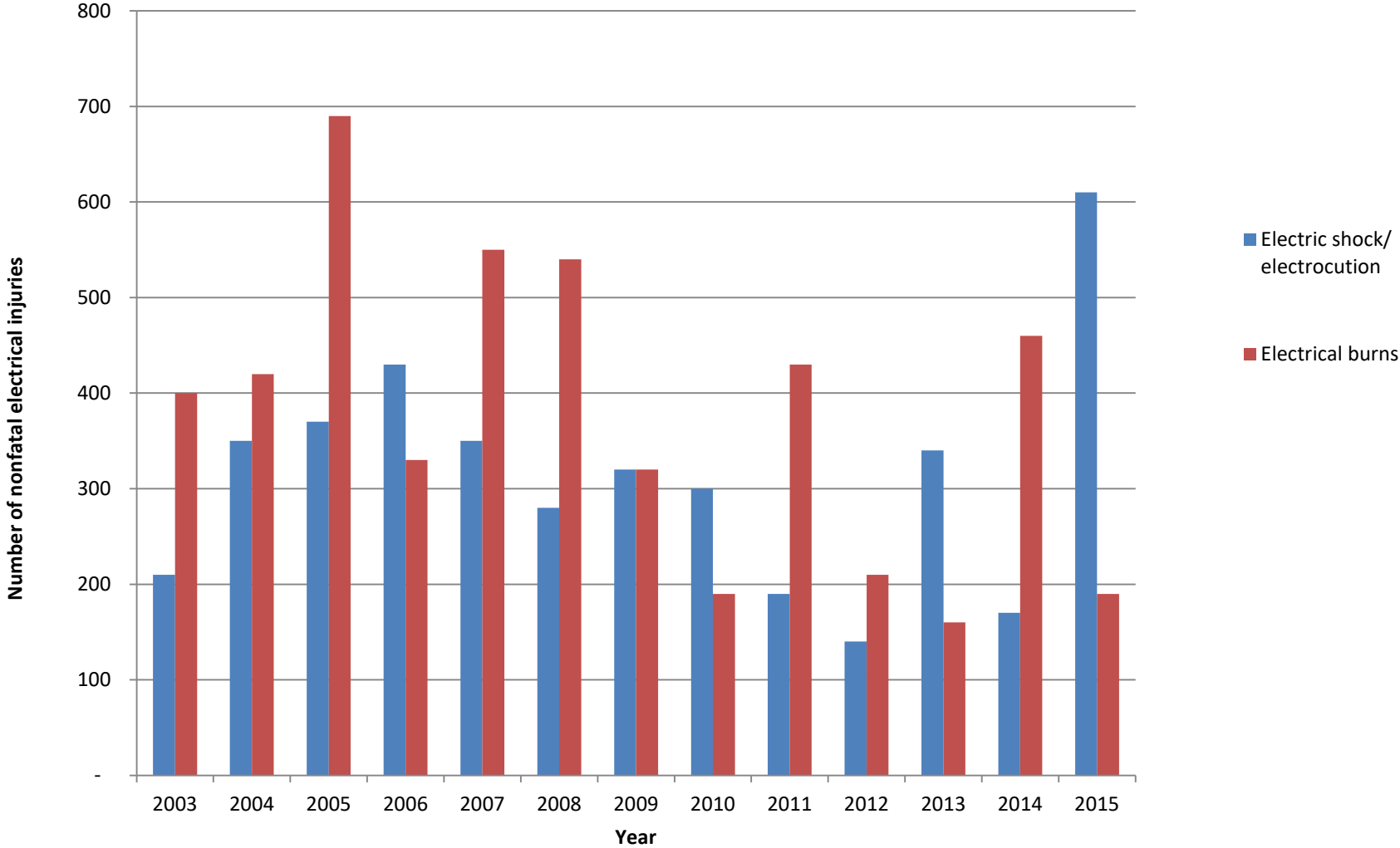
Number of nonfatal electrical injuries, Private Industry, by Nature of Injury (Electrical shock / Electrical burns), 2003-2015



Compiled by the Electrical Safety Foundation International using data from the BLS SOII, 2003-2015

Fig 7A

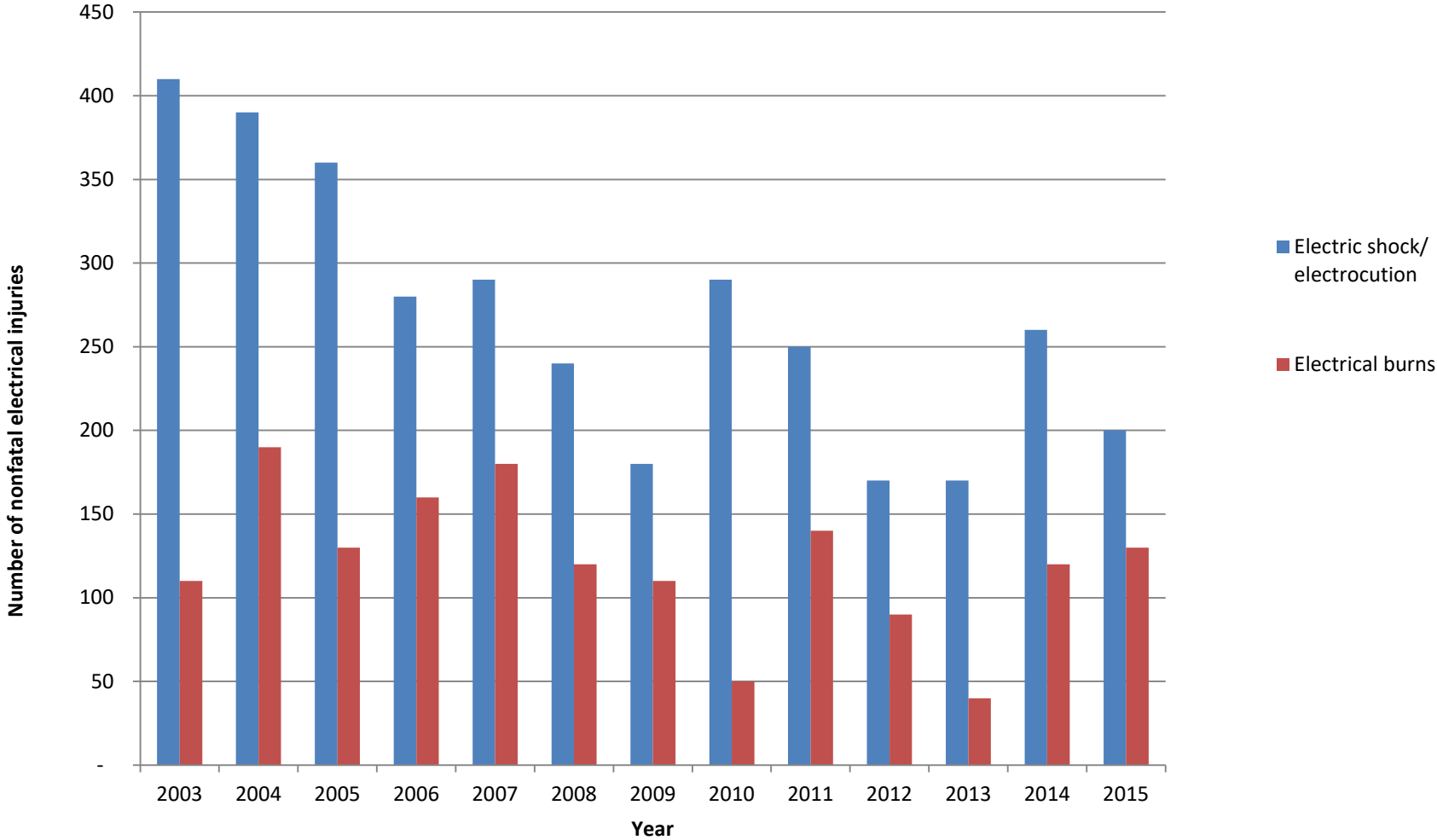
Nonfatal electrical injuries in the Construction industry, by Nature of Injury, Private Industry, 2003-2015



Compiled by the Electrical Safety Foundation International using data from the U.S. Bureau of Labor Statistics, SOII, 2003 -2015

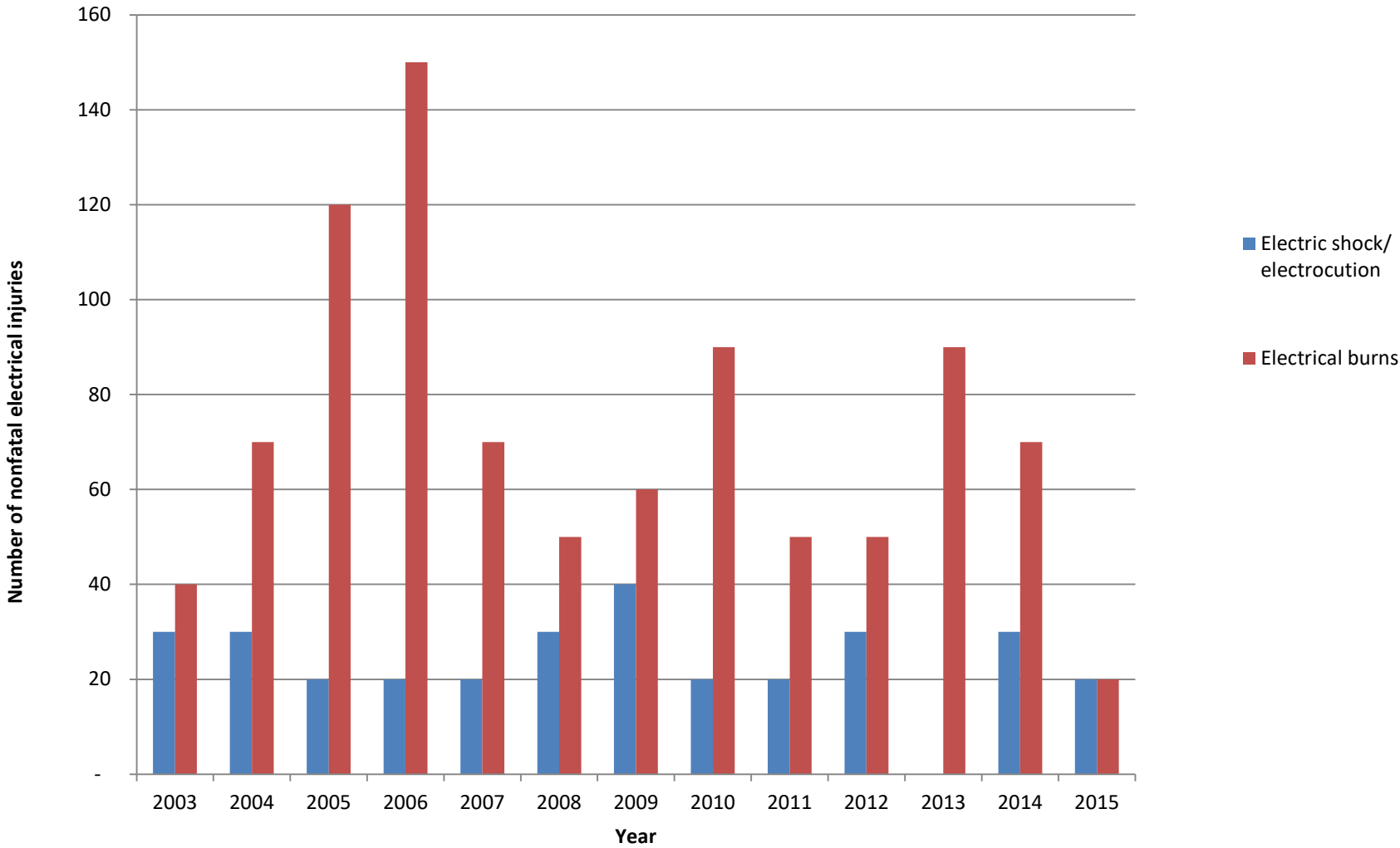
Fig 7B

Nonfatal electrical injuries in the Manufacturing industry, by Nature of Injury, Private Industry, 2003-2015



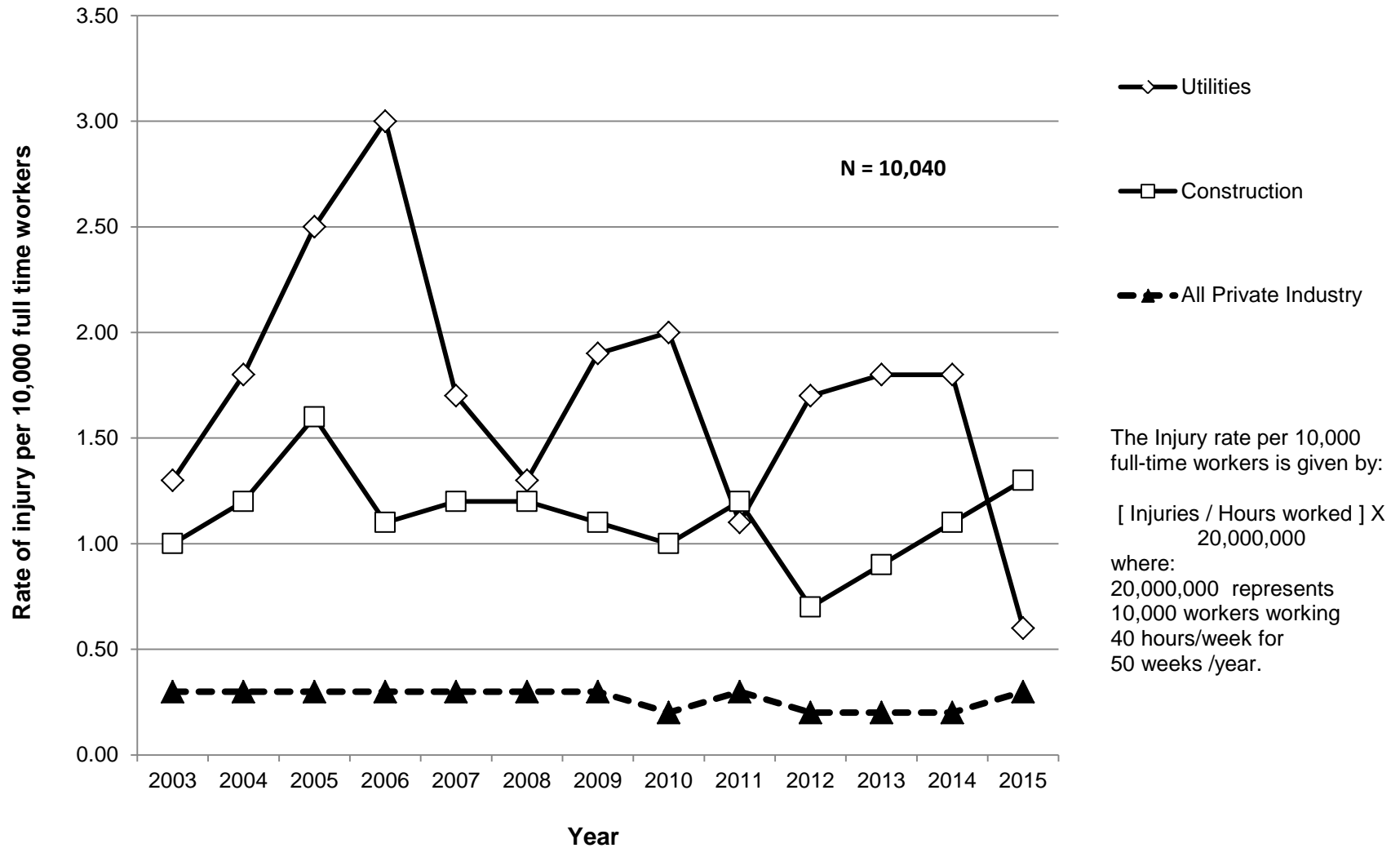
Compiled by the Electrical Safety Foundation International
using data from the U.S. Bureau of Labor Statistics, SOII, 2003 -2015

Nonfatal electrical injuries in the Utility industry, by Nature of Injury, Private Industry, 2003-2015



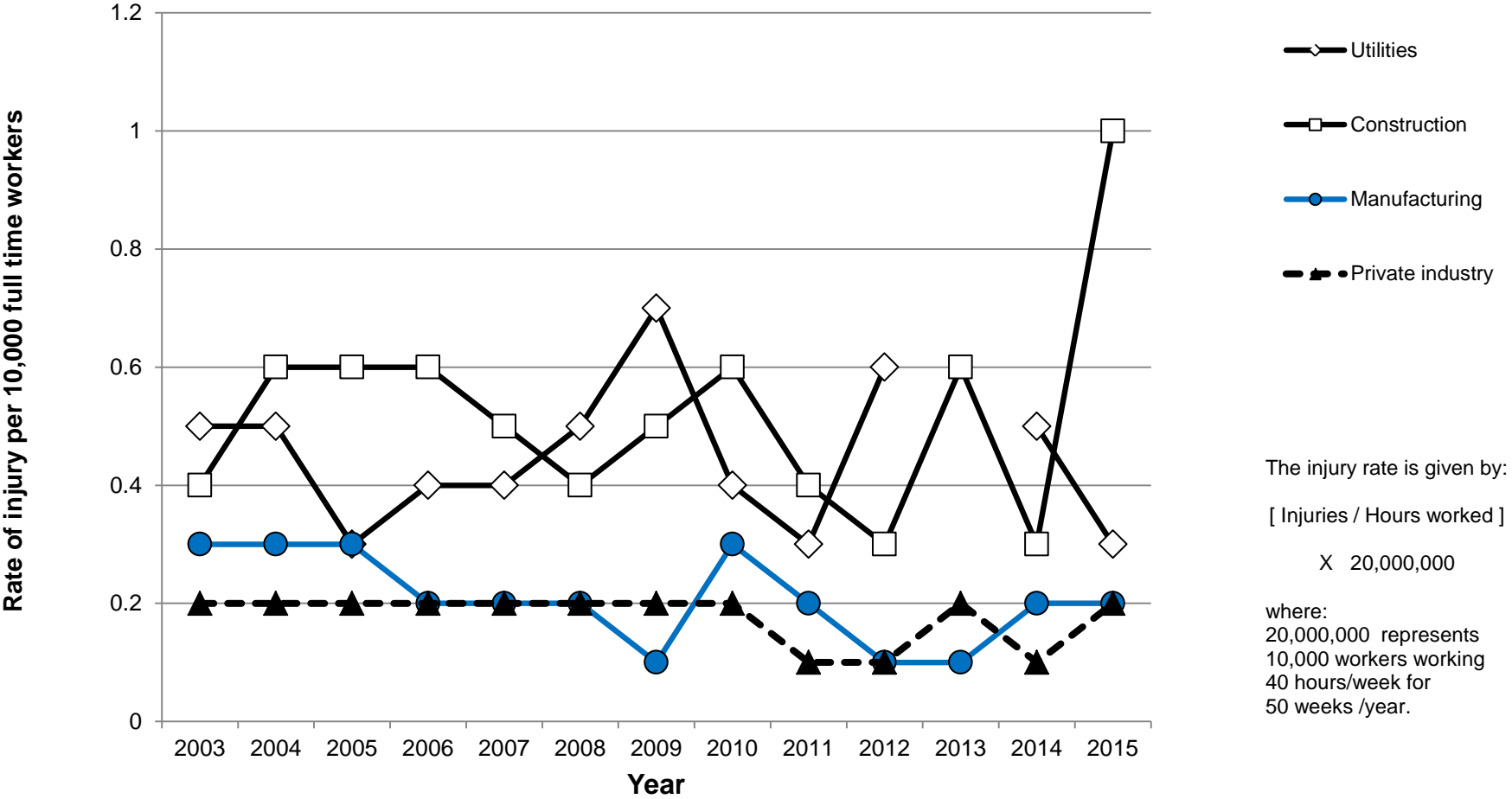
Compiled by the Electrical Safety Foundation International using data from the U.S. Bureau of Labor Statistics, SOII, 2003 -2015

Rates of nonfatal electrical injury involving days away from work for selected industries, by Event, Private Industry, 2003-2015



Compiled by the Electrical Safety Foundation International using data from the U.S. Department of Labor, Bureau of Labor Statistics, SOII, 2003-2015

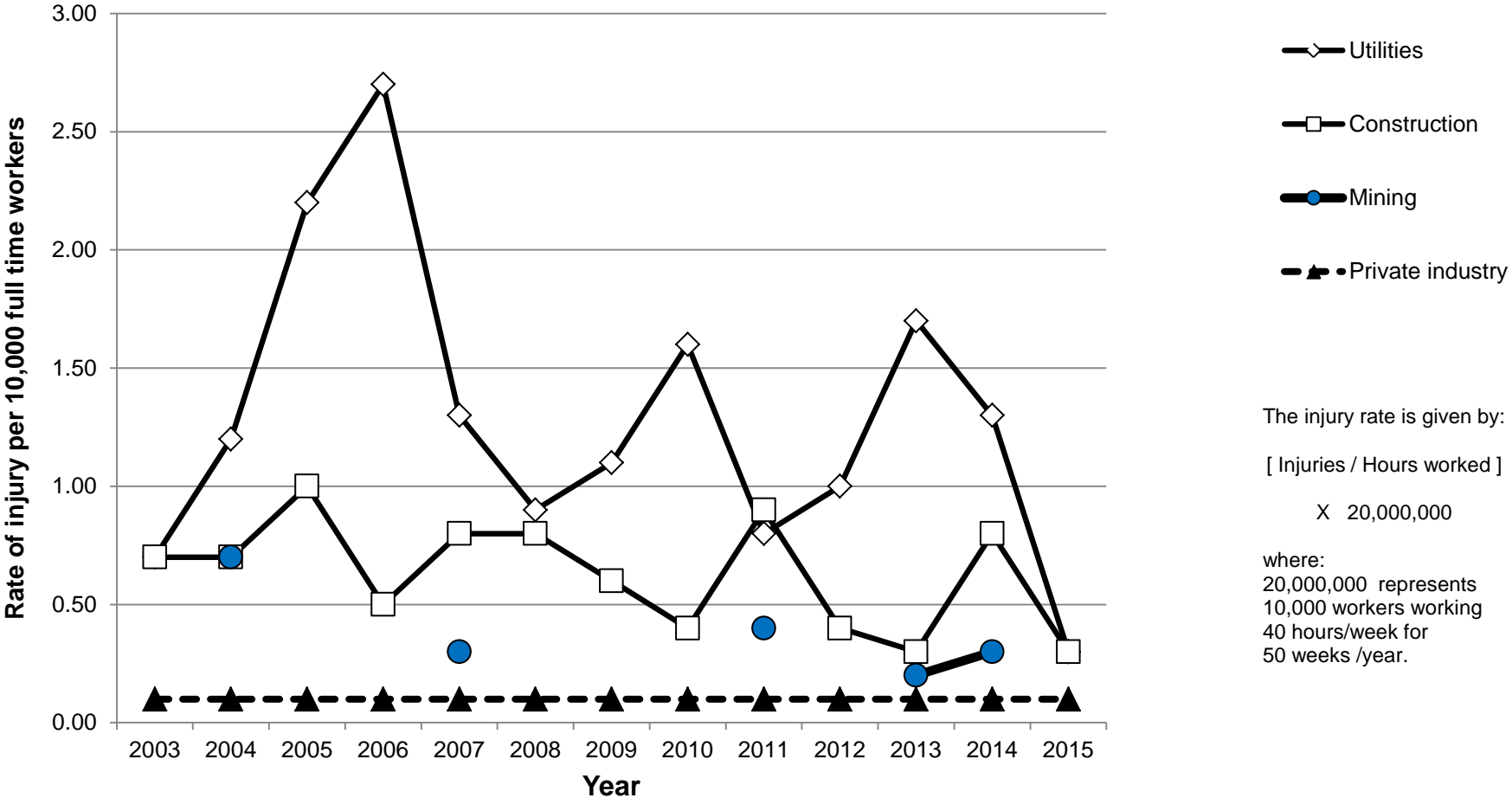
Rates of nonfatal electrical shock injury involving days away from work for selected industries, by Nature of Injury, Private Industry, 2003-2015



Compiled by the Electrical Safety Foundation International using data from the U.S. Department of Labor, Bureau of Labor Statistics, SOII, 2003-2015

Rates of nonfatal electrical burn injury involving days away from work for selected industries, by Nature of Injury, Private Industry, 2003-2015

Fig. 10



Compiled by the Electrical Safety Foundation International using data from the U.S. Department of Labor, Bureau of Labor Statistics, SOII, 2003-2015